

ARG62526 anti-Cytokeratin 15 antibody [LHK15]

Package: 100 µl
Store at: -20°C

Summary

Product Description	Mouse Monoclonal antibody [LHK15] recognizes Cytokeratin 15
Tested Reactivity	Hu, Ms, Rat, Cow
Tested Application	FACS, ICC/IF, IHC-P, SDS-PAGE, WB
Host	Mouse
Clonality	Monoclonal
Clone	LHK15
Isotype	IgG2a, kappa
Target Name	Cytokeratin 15
Species	Human
Immunogen	A 17-mer synthetic peptide from the C-terminus of Human Cytokeratin 15.
Conjugation	Un-conjugated
Alternate Names	CK-15; K15; Keratin, type I cytoskeletal 15; Cytokeratin-15; Keratin-15; K1CO; CK15

Application Instructions

Application table	Application	Dilution
	FACS	0.5 - 1 µg/10 ⁶ cells
	ICC/IF	1 - 2 µg/ml
	IHC-P	0.5 - 1 µg/ml
	SDS-PAGE	Assay-dependent
	WB	0.5 - 1 µg/ml
Application Note	IHC-P: Antigen Retrieval: Boil tissue section in 10mM Citrate buffer (pH 6.0) for 10-20 min. * The dilutions indicate recommended starting dilutions and the optimal dilutions or concentrations should be determined by the scientist.	

Properties

Form	Liquid
Buffer	PBS, 1% BSA and 0.05% Sodium azide
Preservative	0.05% Sodium azide
Stabilizer	1% BSA
Concentration	0.2 mg/ml
Storage instruction	For continuous use, store undiluted antibody at 2-8°C for up to a week. For long-term storage, aliquot and store at -20°C or below. Storage in frost free freezers is not recommended. Avoid repeated

freeze/thaw cycles. Suggest spin the vial prior to opening. The antibody solution should be gently mixed before use.

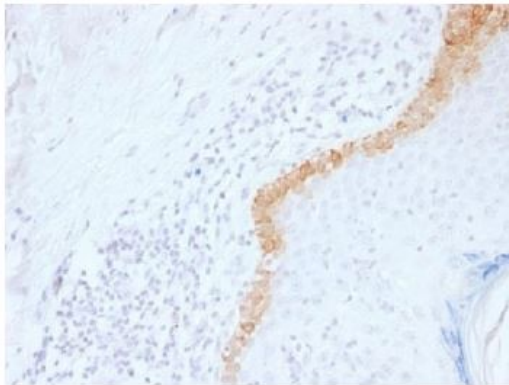
Note

For laboratory research only, not for drug, diagnostic or other use.

Bioinformation

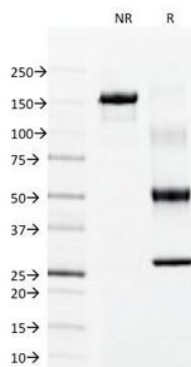
Gene Symbol	KRT15
Gene Full Name	keratin 15, type I
Background	The protein encoded by this gene is a member of the keratin gene family. The keratins are intermediate filament proteins responsible for the structural integrity of epithelial cells and are subdivided into cytokeratins and hair keratins. Most of the type I cytokeratins consist of acidic proteins which are arranged in pairs of heterotypic keratin chains and are clustered in a region on chromosome 17q21.2. [provided by RefSeq, Jul 2008]
Research Area	Signaling Transduction antibody
Calculated Mw	49 kDa

Images



ARG62526 anti-Cytokeratin 15 antibody [LHK15] IHC-P image

Immunohistochemistry: Formalin-fixed and paraffin-embedded Human skin stained with ARG62526 anti-Cytokeratin 15 antibody [LHK15]. Antigen Retrieval: Boil tissue section in 10mM Citrate buffer (pH 6.0) for 10-20 min.



ARG62526 anti-Cytokeratin 15 antibody [LHK15] SDS-PAGE image

SDS-PAGE: Analysis of ARG62526 anti-Cytokeratin 15 antibody [LHK15] under non-reducing or reducing conditions.