

**ARG62367**  
**anti-Bak antibody**Package: 100 µl, 50 µl  
Store at: -20°C**Summary**

Product Description	Rabbit Polyclonal antibody recognizes Bak
Tested Reactivity	Hu, Ms, Hm
Tested Application	IHC-P, WB
Host	Rabbit
Clonality	Polyclonal
Isotype	IgG
Target Name	Bak
Species	Human
Immunogen	A synthetic peptide from the N terminus of human Bak protein.
Epitope	N-terminal
Conjugation	Un-conjugated
Alternate Names	Apoptosis regulator BAK; BCL2L7; Bcl-2-like protein 7; CDN1; Bcl2-L-7; Bcl-2 homologous antagonist/killer; BAK-LIKE; BAK

**Application Instructions**

Application table	Application	Dilution
	IHC-P	1:500
	WB	1:500
Application Note	* The dilutions indicate recommended starting dilutions and the optimal dilutions or concentrations should be determined by the scientist.	
Positive Control	A431 cells. Tonsil.	

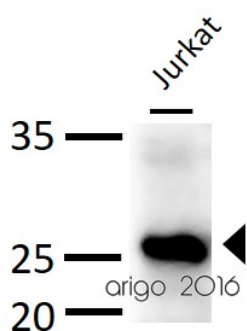
**Properties**

Form	Liquid
Purification	Purified Antibody
Buffer	1X PBS and 0.1% Sodium azide
Preservative	0.1% Sodium azide
Concentration	0.2 mg/ml
Storage instruction	For continuous use, store undiluted antibody at 2-8°C for up to a week. For long-term storage, aliquot and store at -20°C or below. Storage in frost free freezers is not recommended. Avoid repeated freeze/thaw cycles. Suggest spin the vial prior to opening. The antibody solution should be gently mixed before use.

## Bioinformation

Database links	<a href="#">GeneID: 12018 Mouse</a> <a href="#">GeneID: 578 Human</a> <a href="#">Swiss-port # O08734 Mouse</a> <a href="#">Swiss-port # Q16611 Human</a>
Gene Symbol	BAK1
Gene Full Name	BCL2-antagonist/killer 1
Background	The protein encoded by this gene belongs to the BCL2 protein family. BCL2 family members form oligomers or heterodimers and act as anti- or pro-apoptotic regulators that are involved in a wide variety of cellular activities. This protein localizes to mitochondria, and functions to induce apoptosis. It interacts with and accelerates the opening of the mitochondrial voltage-dependent anion channel, which leads to a loss in membrane potential and the release of cytochrome c. This protein also interacts with the tumor suppressor P53 after exposure to cell stress. [provided by RefSeq, Jul 2008]
Function	In the presence of an appropriate stimulus, accelerates programmed cell death by binding to, and antagonizing the anti-apoptotic action of BCL2 or its adenovirus homolog E1B 19k protein. Low micromolar levels of zinc ions inhibit the promotion of apoptosis. [UniProt]
Highlight	Related Antibody Duos and Panels: <a href="#">ARG30275 Pro-apoptotic Bcl2 protein Antibody Panel (BAX, BAK, Bid)</a> Related products: <a href="#">Bak antibodies</a> ; <a href="#">Bak Duos / Panels</a> ; <a href="#">Anti-Rabbit IgG secondary antibodies</a> ;
Research Area	Cell Biology and Cellular Response antibody; Cell Death antibody; Pro-apoptotic Bcl2 protein antibody
Calculated Mw	23 kDa

## Images



ARG62367 anti-Bak antibody WB image

Western blot: 30 µg of Jurkat cell lysate stained with ARG62367 anti-Bak antibody at 1:500 dilution.