

ARG59983 anti-SCFD1 antibody

Package: 100 µl
Store at: -20°C

Summary

Product Description	Rabbit Polyclonal antibody recognizes SCFD1
Tested Reactivity	Hu, Ms, Rat
Tested Application	IHC-P, WB
Host	Rabbit
Clonality	Polyclonal
Isotype	IgG
Target Name	SCFD1
Species	Human
Immunogen	Recombinant fusion protein corresponding to aa. 373-642 of Human SCFD1 (NP_057190.2).
Conjugation	Un-conjugated
Alternate Names	Syntaxin-binding protein 1-like 2; Sec1 family domain-containing protein 1; SLY1; SLY1P; STXBP1L2; Sly1p; RA410; SLY1 homolog; C14orf163

Application Instructions

Application table	Application	Dilution
	IHC-P	1:50 - 1:200
	WB	1:500 - 1:2000
Application Note	* The dilutions indicate recommended starting dilutions and the optimal dilutions or concentrations should be determined by the scientist.	
Positive Control	A431 and U87	
Observed Size	72 kDa	

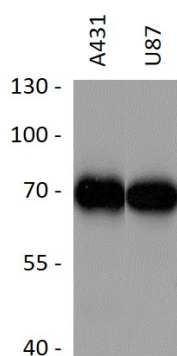
Properties

Form	Liquid
Purification	Affinity purified.
Buffer	PBS (pH 7.3), 0.02% Sodium azide and 50% Glycerol.
Preservative	0.02% Sodium azide
Stabilizer	50% Glycerol
Storage instruction	For continuous use, store undiluted antibody at 2-8°C for up to a week. For long-term storage, aliquot and store at -20°C. Storage in frost free freezers is not recommended. Avoid repeated freeze/thaw cycles. Suggest spin the vial prior to opening. The antibody solution should be gently mixed before use.
Note	For laboratory research only, not for drug, diagnostic or other use.

Bioinformation

Gene Symbol	SCFD1
Gene Full Name	sec1 family domain containing 1
Function	Plays a role in SNARE-pin assembly and Golgi-to-ER retrograde transport via its interaction with COG4. Involved in vesicular transport between the endoplasmic reticulum and the Golgi (By similarity). [UniProt]
Calculated Mw	72 kDa
Cellular Localization	Cytoplasm. Endoplasmic reticulum membrane; Peripheral membrane protein. Golgi apparatus, Golgi stack membrane; Peripheral membrane protein. [UniProt]

Images



ARG59983 anti-SCFD1 antibody WB image

Western blot: 25 µg of A431 and U87 cell lysates stained with ARG59983 anti-SCFD1 antibody at 1:1000 dilution.