

ARG59943 anti-Myosin light chain 3 antibody

Package: 100 µl
Store at: -20°C

Summary

Product Description	Rabbit Polyclonal antibody recognizes Myosin light chain 3
Tested Reactivity	Hu, Ms, Rat
Tested Application	ICC/IF, WB
Host	Rabbit
Clonality	Polyclonal
Isotype	IgG
Target Name	Myosin light chain 3
Species	Human
Immunogen	Recombinant fusion protein corresponding to aa. 1-195 of Human Myosin light chain 3 (NP_000249.1).
Conjugation	Un-conjugated
Alternate Names	MLC1S; Ventricular/slow twitch myosin alkali light chain; VLC1; CMH8; Myosin light chain 3; Myosin light chain 1, slow-twitch muscle B/ventricular isoform; MLC1V; CMLC1; Cardiac myosin light chain 1

Application Instructions

Application table	Application	Dilution
	ICC/IF	1:50 - 1:200
	WB	1:500 - 1:2000
Application Note	* The dilutions indicate recommended starting dilutions and the optimal dilutions or concentrations should be determined by the scientist.	
Positive Control	Mouse lung and HepG2	
Observed Size	23 kDa	

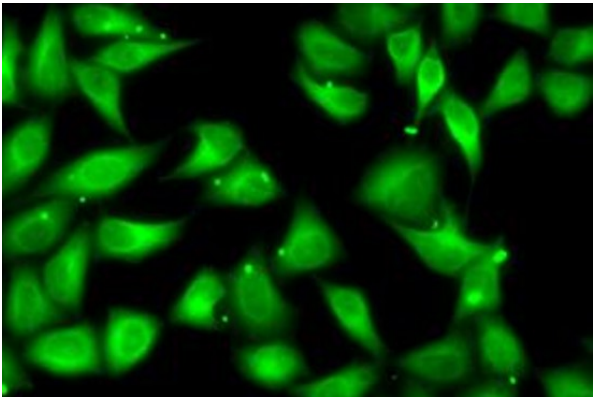
Properties

Form	Liquid
Purification	Affinity purified.
Buffer	PBS (pH 7.3), 0.02% Sodium azide and 50% Glycerol.
Preservative	0.02% Sodium azide
Stabilizer	50% Glycerol
Storage instruction	For continuous use, store undiluted antibody at 2-8°C for up to a week. For long-term storage, aliquot and store at -20°C. Storage in frost free freezers is not recommended. Avoid repeated freeze/thaw cycles. Suggest spin the vial prior to opening. The antibody solution should be gently mixed before use.
Note	For laboratory research only, not for drug, diagnostic or other use.

Bioinformation

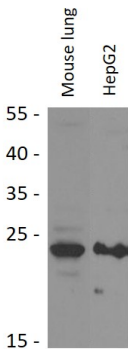
Gene Symbol	MYL3
Gene Full Name	myosin, light chain 3, alkali; ventricular, skeletal, slow
Background	MYL3 encodes myosin light chain 3, an alkali light chain also referred to in the literature as both the ventricular isoform and the slow skeletal muscle isoform. Mutations in MYL3 have been identified as a cause of mid-left ventricular chamber type hypertrophic cardiomyopathy. [provided by RefSeq, Jul 2008]
Function	Regulatory light chain of myosin. Does not bind calcium. [UniProt]
Calculated Mw	22 kDa
PTM	The N-terminus is blocked. N-terminus is methylated by METTL11A/NTM1. [UniProt]

Images



ARG59943 anti-Myosin light chain 3 antibody ICC/IF image

Immunofluorescence: U2OS cells stained with ARG59943 anti-Myosin light chain 3 antibody.



ARG59943 anti-Myosin light chain 3 antibody WB image

Western blot: 25 µg of Mouse lung and HepG2 cell lysates stained with ARG59943 anti-Myosin light chain 3 antibody at 1:1000 dilution.