

ARG59735 anti-HSD17B2 antibody

Package: 100 µl
Store at: -20°C

Summary

Product Description	Rabbit Polyclonal antibody recognizes HSD17B2
Tested Reactivity	Hu
Tested Application	FACS, IHC-P
Host	Rabbit
Clonality	Polyclonal
Isotype	IgG
Target Name	HSD17B2
Species	Human
Immunogen	KLH-conjugated synthetic peptide between aa. 265-294 of Human HSD17B2.
Conjugation	Un-conjugated
Alternate Names	17-beta-hydroxysteroid dehydrogenase type 2; Short chain dehydrogenase/reductase family 9C member 2; EC 1.1.1.239; HSD17; Estradiol 17-beta-dehydrogenase 2; 20-alpha-HSD; 17-beta-HSD 2; Microsomal 17-beta-hydroxysteroid dehydrogenase; E2DH; SDR9C2; 20 alpha-hydroxysteroid dehydrogenase; EC 1.1.1.62; Testosterone 17-beta-dehydrogenase; EDH17B2

Application Instructions

Application table	Application	Dilution
	FACS	1:10 - 1:50
	IHC-P	1:10 - 1:50
Application Note	* The dilutions indicate recommended starting dilutions and the optimal dilutions or concentrations should be determined by the scientist.	

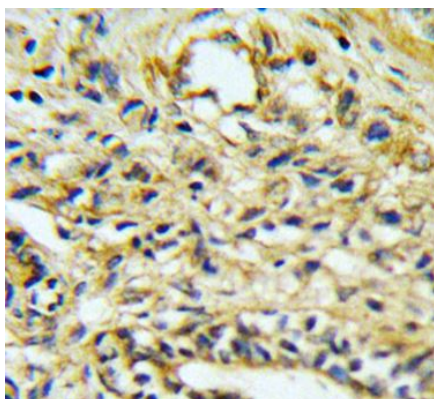
Properties

Form	Liquid
Purification	Purification with Protein A and immunogen peptide.
Buffer	PBS and 0.09% (W/V) Sodium azide.
Preservative	0.09% (W/V) Sodium azide.
Storage instruction	For continuous use, store undiluted antibody at 2-8°C for up to a week. For long-term storage, aliquot and store at -20°C or below. Storage in frost free freezers is not recommended. Avoid repeated freeze/thaw cycles. Suggest spin the vial prior to opening. The antibody solution should be gently mixed before use.
Note	For laboratory research only, not for drug, diagnostic or other use.

Bioinformation

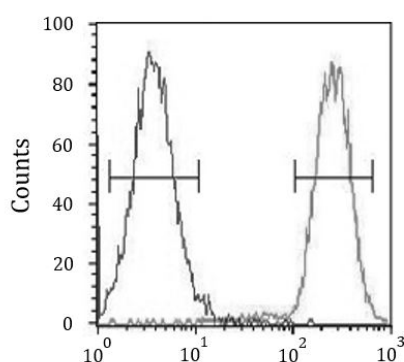
Gene Symbol	HSD17B2
Gene Full Name	hydroxysteroid (17-beta) dehydrogenase 2
Function	Capable of catalyzing the interconversion of testosterone and androstenedione, as well as estradiol and estrone. Also has 20-alpha-HSD activity. Uses NADH while EDH17B3 uses NADPH. [UniProt]
Calculated Mw	43 kDa
Cellular Localization	Membrane; Single-pass type II membrane protein. [UniProt]

Images



ARG59735 anti-HSD17B2 antibody IHC-P image

Immunohistochemistry: Formalin-fixed and paraffin-embedded Human prostate carcinoma stained with ARG59735 anti-HSD17B2 antibody.



ARG59735 anti-HSD17B2 antibody FACS image

Flow Cytometry: MDA-MB435 cells stained with ARG59735 anti-HSD17B2 antibody (right histogram) or without primary antibody as control (left histogram), followed by incubation with FITC labelled secondary antibody.