

## ARG59690 anti-Haptoglobin antibody

Package: 50 µg  
Store at: -20°C

### Summary

Product Description	Goat Polyclonal antibody recognizes Haptoglobin
Tested Reactivity	Hu, Pig
Predict Reactivity	Dog
Tested Application	WB
Host	Goat
Clonality	Polyclonal
Isotype	IgG
Target Name	Haptoglobin
Species	Human
Immunogen	Synthetic peptide around the internal region of Human Haptoglobin. (NP_005134.1; NP_001119574.1, C-STVPEKKTPKSP)
Conjugation	Un-conjugated
Alternate Names	HPA1S; Haptoglobin; BP; HP2ALPHA2; Zonulin

### Application Instructions

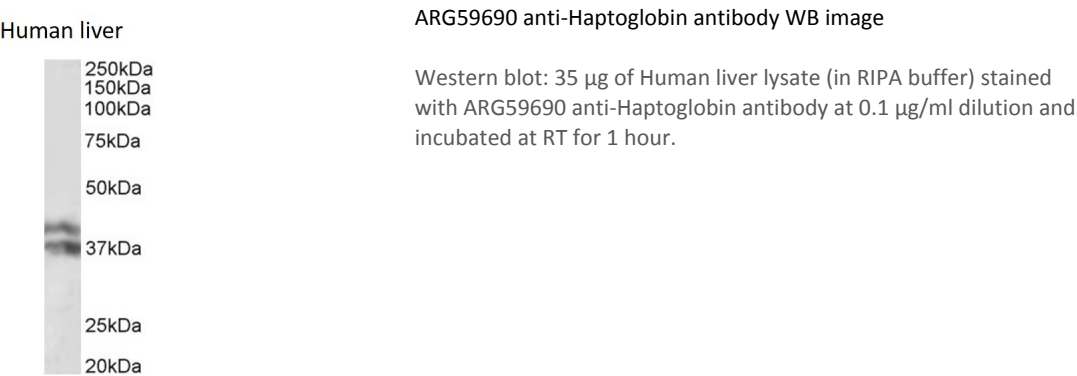
Application table	Application	Dilution
	WB	0.1 - 0.3 µg/ml
Application Note	WB: Recommend incubate at RT for 1h. * The dilutions indicate recommended starting dilutions and the optimal dilutions or concentrations should be determined by the scientist.	
Observed Size	37, 40 kDa (Human), 40 kDa (Pig)	

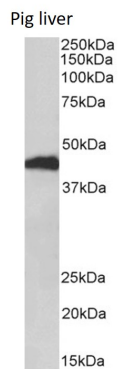
### Properties

Form	Liquid
Purification	Affinity purified
Buffer	Tris saline (pH 7.3), 0.02% Sodium azide and 0.5% BSA.
Preservative	0.02% Sodium azide
Stabilizer	0.5% BSA
Concentration	0.5 mg/ml
Storage instruction	For continuous use, store undiluted antibody at 2-8°C for up to a week. For long-term storage, aliquot and store at -20°C or below. Storage in frost free freezers is not recommended. Avoid repeated freeze/thaw cycles. Suggest spin the vial prior to opening. The antibody solution should be gently mixed before use.

Note	For laboratory research only, not for drug, diagnostic or other use.
<b>Bioinformation</b>	
Gene Symbol	HP
Gene Full Name	haptoglobin
Background	<p>This gene encodes a preproprotein, which is processed to yield both alpha and beta chains, which subsequently combine as a tetramer to produce haptoglobin. Haptoglobin functions to bind free plasma hemoglobin, which allows degradative enzymes to gain access to the hemoglobin, while at the same time preventing loss of iron through the kidneys and protecting the kidneys from damage by hemoglobin. Mutations in this gene and/or its regulatory regions cause ahaptoglobinemia or hypohaptoglobinemia. This gene has also been linked to diabetic nephropathy, the incidence of coronary artery disease in type 1 diabetes, Crohn's disease, inflammatory disease behavior, primary sclerosing cholangitis, susceptibility to idiopathic Parkinson's disease, and a reduced incidence of Plasmodium falciparum malaria. The protein encoded also exhibits antimicrobial activity against bacteria. A similar duplicated gene is located next to this gene on chromosome 16. Multiple transcript variants encoding different isoforms have been found for this gene. [provided by RefSeq, Oct 2014]</p>
Function	<p>As a result of hemolysis, hemoglobin is found to accumulate in the kidney and is secreted in the urine. Haptoglobin captures, and combines with free plasma hemoglobin to allow hepatic recycling of heme iron and to prevent kidney damage. Haptoglobin also acts as an Antimicrobial; Antioxidant, has antibacterial activity and plays a role in modulating many aspects of the acute phase response. Hemoglobin/haptoglobin complexes are rapidly cleared by the macrophage CD163 scavenger receptor expressed on the surface of liver Kupfer cells through an endocytic lysosomal degradation pathway.</p> <p>Uncleaved haptoglobin, also known as zonulin, plays a role in intestinal permeability, allowing intercellular tight junction disassembly, and controlling the equilibrium between tolerance and immunity to non-self antigens. [UniProt]</p>
Calculated Mw	45.2 kDa (NP_005134.1); 38.5 kDa (NP_001119574.1)
Cellular Localization	Secreted. [UniProt]

Images





#### ARG59690 anti-Haptoglobin antibody WB image

Western blot: 35 µg of Pig liver lysate (in RIPA buffer) stained with ARG59690 anti-Haptoglobin antibody at 1 µg/ml dilution and incubated at RT for 1 hour.