

## ARG59658 anti-CD193 / CCR3 antibody

Package: 50 µg  
Store at: -20°C

### Summary

Product Description	Rabbit Polyclonal antibody recognizes CD193 / CCR3
Tested Reactivity	Hu, Ms, Rat
Tested Application	FACS, WB
Host	Rabbit
Clonality	Polyclonal
Isotype	IgG
Target Name	CD193 / CCR3
Species	Human
Immunogen	Synthetic peptide corresponding to a sequence of Human CCR3. (MTTSLDTVETFGTTSYYDDVGLLCEKADTRALMA)
Conjugation	Un-conjugated
Alternate Names	C-C chemokine receptor type 3; CD193; CKR3; CCR-3; Eosinophil eotaxin receptor; CMKBR3; C-C CKR-3; CCR3; CC-CKR-3; CD antigen CD193

### Application Instructions

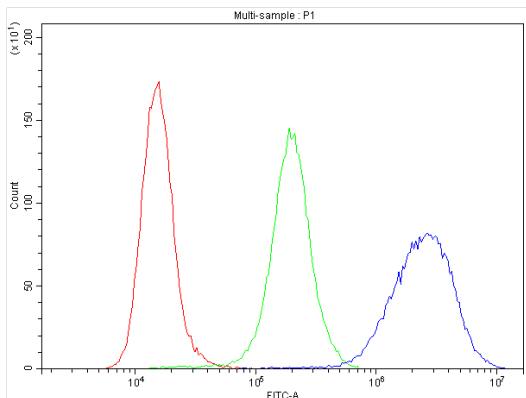
Application table	Application	Dilution
	FACS	1 - 3 µg/10 <sup>6</sup> cells
	WB	0.1 - 0.5 µg/ml
Application Note	* The dilutions indicate recommended starting dilutions and the optimal dilutions or concentrations should be determined by the scientist.	

### Properties

Form	Liquid
Purification	Affinity purification with immunogen.
Buffer	0.9% NaCl, 0.2% Na <sub>2</sub> HPO <sub>4</sub> , 0.05% Sodium azide and 4% Trehalose.
Preservative	0.05% Sodium azide
Stabilizer	4% Trehalose
Concentration	0.5 mg/ml
Storage instruction	For continuous use, store undiluted antibody at 2-8°C for up to a week. For long-term storage, aliquot and store at -20°C or below. Storage in frost free freezers is not recommended. Avoid repeated freeze/thaw cycles. Suggest spin the vial prior to opening. The antibody solution should be gently mixed before use.
Note	For laboratory research only, not for drug, diagnostic or other use.

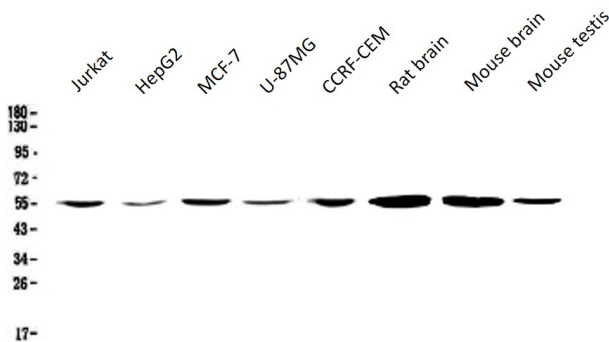
Gene Symbol	CCR3
Gene Full Name	chemokine (C-C motif) receptor 3
Background	The protein encoded by this gene is a receptor for C-C type chemokines. It belongs to family 1 of the G protein-coupled receptors. This receptor binds and responds to a variety of chemokines, including eotaxin (CCL11), eotaxin-3 (CCL26), MCP-3 (CCL7), MCP-4 (CCL13), and RANTES (CCL5). It is highly expressed in eosinophils and basophils, and is also detected in TH1 and TH2 cells, as well as in airway epithelial cells. This receptor may contribute to the accumulation and activation of eosinophils and other inflammatory cells in the allergic airway. It is also known to be an entry co-receptor for HIV-1. This gene and seven other chemokine receptor genes form a chemokine receptor gene cluster on the chromosomal region 3p21. Alternatively spliced transcript variants have been described. [provided by RefSeq, Sep 2009]
Function	Receptor for a C-C type chemokine. Binds to eotaxin, eotaxin-3, MCP-3, MCP-4, RANTES and MIP-1 delta. Subsequently transduces a signal by increasing the intracellular calcium ions level. Alternative coreceptor with CD4 for HIV-1 infection. [UniProt]
Calculated Mw	41 kDa
Cellular Localization	Cell membrane; Multi-pass membrane protein. [UniProt]

Images



ARG59658 anti-CD193 / CCR3 antibody FACS image

Flow Cytometry: RAW264.7 cells were blocked with 10% normal goat serum and then stained with ARG59658 anti-CD193 / CCR3 antibody (blue) at 1 µg/10<sup>6</sup> cells for 30 min at 20°C, followed by DyLight®488 labelled secondary antibody. Isotype control antibody (green) was Rabbit IgG (1 µg/10<sup>6</sup> cells) used under the same conditions. Unlabelled sample (red) was also used as a control.



ARG59658 anti-CD193 / CCR3 antibody WB image

Western blot: 50 µg of samples under reducing conditions. Jurkat whole cell lysates, HepG2 whole cell lysates, MCF-7 whole cell lysates, U-87MG whole cell lysates, CCRF-CEM whole cell lysates, Rat brain lysates, Mouse brain lysates and Mouse testis lysates stained with ARG59658 anti-CD193 / CCR3 antibody at 0.5 µg/ml, overnight at 4°C.