

## ARG59638 anti-Hexokinase 3 antibody

Package: 100 µl  
Store at: -20°C

### Summary

Product Description	Rabbit Polyclonal antibody recognizes Hexokinase 3
Tested Reactivity	Hu
Tested Application	WB
Host	Rabbit
Clonality	Polyclonal
Isotype	IgG
Target Name	Hexokinase 3
Species	Human
Immunogen	KLH-conjugated synthetic peptide corresponding to aa. 1-30 of Human Hexokinase 3.
Conjugation	Un-conjugated
Alternate Names	HK III; Hexokinase type III; HKIII; Hexokinase-3; EC 2.7.1.1; HXK3

### Application Instructions

Application table	Application	Dilution
	WB	1:1000
Application Note	* The dilutions indicate recommended starting dilutions and the optimal dilutions or concentrations should be determined by the scientist.	
Positive Control	HeLa	

### Properties

Form	Liquid
Purification	Purification with Protein G.
Buffer	PBS and 0.09% (W/V) Sodium azide.
Preservative	0.09% (W/V) Sodium azide
Storage instruction	For continuous use, store undiluted antibody at 2-8°C for up to a week. For long-term storage, aliquot and store at -20°C or below. Storage in frost free freezers is not recommended. Avoid repeated freeze/thaw cycles. Suggest spin the vial prior to opening. The antibody solution should be gently mixed before use.
Note	For laboratory research only, not for drug, diagnostic or other use.

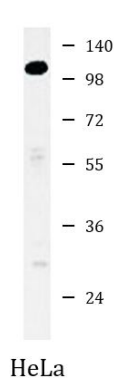
### Bioinformation

Gene Symbol	HK3
-------------	-----

Gene Full Name	hexokinase 3 (white cell)
Background	Hexokinases phosphorylate glucose to produce glucose-6-phosphate, the first step in most glucose metabolism pathways. This gene encodes hexokinase 3. Similar to hexokinases 1 and 2, this allosteric enzyme is inhibited by its product glucose-6-phosphate. [provided by RefSeq, Apr 2009]
Calculated Mw	99 kDa

Images

---



ARG59638 anti-Hexokinase 3 antibody WB image

Western blot: 35 µg of HeLa cell lysate stained with ARG59638 anti-Hexokinase 3 antibody.