

ARG59586 anti-GIF / Gastric intrinsic factor antibody

Package: 100 µl
Store at: -20°C

Summary

Product Description	Rabbit Polyclonal antibody recognizes GIF / Gastric intrinsic factor
Tested Reactivity	Hu, Ms
Tested Application	ICC/IF, WB
Host	Rabbit
Clonality	Polyclonal
Isotype	IgG
Target Name	GIF / Gastric intrinsic factor
Species	Human
Immunogen	Recombinant fusion protein corresponding to aa. 20-300 of Human GIF (NP_005133.2).
Conjugation	Un-conjugated
Alternate Names	Gastric intrinsic factor; IFMH; TCN3; Intrinsic factor; INF; IF

Application Instructions

Application table	Application	Dilution
	ICC/IF	1:50 - 1:100
	WB	1:500 - 1:2000
Application Note	* The dilutions indicate recommended starting dilutions and the optimal dilutions or concentrations should be determined by the scientist.	
Positive Control	Mouse pancreas	

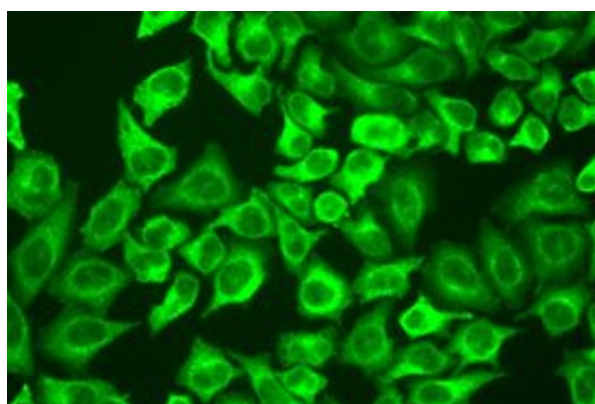
Properties

Form	Liquid
Purification	Affinity purified.
Buffer	PBS (pH 7.3), 0.02% Sodium azide and 50% Glycerol.
Preservative	0.02% Sodium azide
Stabilizer	50% Glycerol
Storage instruction	For continuous use, store undiluted antibody at 2-8°C for up to a week. For long-term storage, aliquot and store at -20°C. Storage in frost free freezers is not recommended. Avoid repeated freeze/thaw cycles. Suggest spin the vial prior to opening. The antibody solution should be gently mixed before use.
Note	For laboratory research only, not for drug, diagnostic or other use.

Bioinformation

Gene Symbol	GIF
Gene Full Name	gastric intrinsic factor (vitamin B synthesis)
Background	This gene is a member of the cobalamin transport protein family. It encodes a glycoprotein secreted by parietal cells of the gastric mucosa and is required for adequate absorption of vitamin B12. Vitamin B12 is necessary for erythrocyte maturation and mutations in this gene may lead to congenital pernicious anemia. [provided by RefSeq, Jul 2008]
Function	Promotes absorption of the essential vitamin cobalamin (Cbl) in the ileum. After interaction with CUBN, the GIF-cobalamin complex is internalized via receptor-mediated endocytosis. [UniProt]
Calculated Mw	45 kDa
Cellular Localization	Secreted. [UniProt]

Images



ARG59586 anti-GIF / Gastric intrinsic factor antibody ICC/IF image

Immunofluorescence: A549 cells stained with ARG59586 anti-GIF / Gastric intrinsic factor antibody.