

ARG59570 anti-CD121a / IL1 Receptor1 antibody

Package: 100 µl
Store at: -20°C

Summary

Product Description	Rabbit Polyclonal antibody recognizes CD121a / IL1 Receptor1
Tested Reactivity	Hu, Ms, Rat
Tested Application	WB
Host	Rabbit
Clonality	Polyclonal
Isotype	IgG
Target Name	CD121a / IL1 Receptor1
Species	Human
Immunogen	Recombinant protein of Human CD121a / IL1 Receptor1
Conjugation	Un-conjugated
Alternate Names	Interleukin-1 receptor alpha; sIL-1R1; p80; CD121A; mL-1RI; IL1R; P80; Interleukin-1 receptor type I; IL1RA; D2S1473; Interleukin-1 receptor type 1; IL-1R-alpha; IL-1RT-1; CD121 antigen-like family member A; IL-1R-1; sIL-1RI; IL-1RT1; mL-1RI; CD antigen CD121a

Application Instructions

Application table	Application	Dilution
	WB	1:500 - 1:2000
Application Note	* The dilutions indicate recommended starting dilutions and the optimal dilutions or concentrations should be determined by the scientist.	
Positive Control	BT-474	
Observed Size	80 kDa	

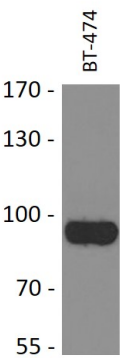
Properties

Form	Liquid
Purification	Affinity purified.
Buffer	PBS (pH 7.3), 0.02% Sodium azide and 50% Glycerol.
Preservative	0.02% Sodium azide
Stabilizer	50% Glycerol
Storage instruction	For continuous use, store undiluted antibody at 2-8°C for up to a week. For long-term storage, aliquot and store at -20°C. Storage in frost free freezers is not recommended. Avoid repeated freeze/thaw cycles. Suggest spin the vial prior to opening. The antibody solution should be gently mixed before use.
Note	For laboratory research only, not for drug, diagnostic or other use.

Bioinformation

Gene Symbol	IL1R1
Gene Full Name	interleukin 1 receptor, type I
Background	This gene encodes a cytokine receptor that belongs to the interleukin-1 receptor family. The encoded protein is a receptor for interleukin-1 alpha, interleukin-1 beta, and interleukin-1 receptor antagonist. It is an important mediator involved in many cytokine-induced immune and inflammatory responses. This gene is located in a cluster of related cytokine receptor genes on chromosome 2q12. [provided by RefSeq, Dec 2013]
Function	Receptor for IL1A, IL1B and IL1RN. After binding to interleukin-1 associates with the coreceptor IL1RAP to form the high affinity interleukin-1 receptor complex which mediates interleukin-1-dependent activation of NF-kappa-B, MAPK and other pathways. Signaling involves the recruitment of adapter molecules such as TOLLIP, MYD88, and IRAK1 or IRAK2 via the respective TIR domains of the receptor/coreceptor subunits. Binds ligands with comparable affinity and binding of antagonist IL1RN prevents association with IL1RAP to form a signaling complex. [UniProt]
Calculated Mw	65 kDa
PTM	A soluble form (sIL1R1) is probably produced by proteolytic cleavage at the cell surface (shedding). Rapidly phosphorylated on Tyr-496 in response to IL-1, which creates a SH2 binding site for the PI 3-kinase regulatory subunit PIK3R1. [UniProt]
Cellular Localization	Membrane; Single-pass type I membrane protein. Cell membrane. Secreted. [UniProt]

Images



ARG59570 anti-CD121a / IL1 Receptor1 antibody WB image

Western blot: 25 µg of BT-474 cell lysate stained with ARG59570 anti-CD121a / IL1 Receptor1 antibody at 1:1000 dilution.