

## ARG59428 anti-CRLF2 antibody

Package: 50 µg  
Store at: -20°C

### Summary

Product Description	Rabbit Polyclonal antibody recognizes CRLF2
Tested Reactivity	Hu
Tested Application	IHC-P, WB
Specificity	At least two isoforms of CRLF2 are known to exist; this antibody will recognize both isoforms.
Host	Rabbit
Clonality	Polyclonal
Isotype	IgG
Target Name	CRLF2
Species	Human
Immunogen	A 19 amino acid synthetic peptide within aa. 140-190 of Human CRLF2.
Conjugation	Un-conjugated
Alternate Names	CRL2; Cytokine receptor-like 2; Cytokine receptor-like factor 2; Thymic stromal lymphopoietin protein receptor; TSLP receptor; TSLPR; IL-XR; CRLF2Y

### Application Instructions

Application table	Application	Dilution
	IHC-P	5 - 20 µg/ml
	WB	0.5 - 1 µg/ml
Application Note	* The dilutions indicate recommended starting dilutions and the optimal dilutions or concentrations should be determined by the scientist.	
Positive Control	Human liver	
Observed Size	53 kDa	

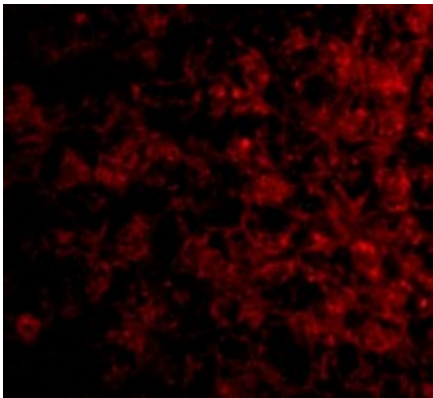
### Properties

Form	Liquid
Purification	Affinity purification with immunogen.
Buffer	PBS and 0.02% Sodium azide
Preservative	0.02% Sodium azide
Concentration	1 mg/ml
Storage instruction	For continuous use, store undiluted antibody at 2-8°C for up to a week. For long-term storage, aliquot and store at -20°C or below. Storage in frost free freezers is not recommended. Avoid repeated freeze/thaw cycles. Suggest spin the vial prior to opening. The antibody solution should be gently mixed before use.

Bioinformation

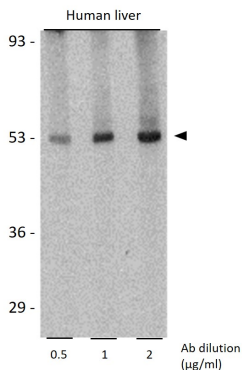
Gene Symbol	CRLF2
Gene Full Name	cytokine receptor-like factor 2
Background	This gene encodes a member of the type I cytokine receptor family. The encoded protein is a receptor for thymic stromal lymphopoietin (TSLP). Together with the interleukin 7 receptor (IL7R), the encoded protein and TSLP activate STAT3, STAT5, and JAK2 pathways, which control processes such as cell proliferation and development of the hematopoietic system. Rearrangement of this gene with immunoglobulin heavy chain gene (IGH) on chromosome 14, or with P2Y purinoceptor 8 gene (P2RY8) on the same X or Y chromosomes is associated with B-progenitor acute lymphoblastic leukemia (ALL) and Down syndrome ALL. Alternatively spliced transcript variants have been found for this gene. [provided by RefSeq, Sep 2014]
Function	Receptor for thymic stromal lymphopoietin (TSLP). Forms a functional complex with TSLP and IL7R which is capable of stimulating cell proliferation through activation of STAT3 and STAT5. Also activates JAK2 (By similarity). Implicated in the development of the hematopoietic system. [UniProt]
Calculated Mw	42 kDa
Cellular Localization	Isoform 1: Cell membrane; Single-pass type I membrane protein. Isoform 2: Secreted. [UniProt]

Images



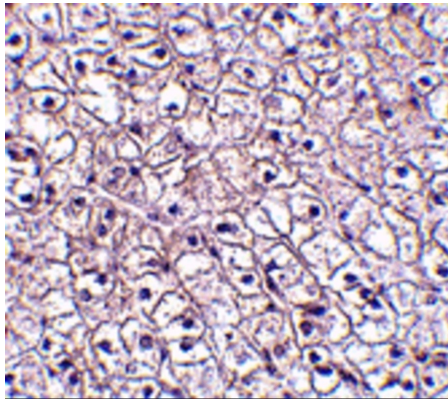
ARG59428 anti-CRLF2 antibody IHC-P image

Immunohistochemistry: Paraffin-embedded Human liver stained with ARG59428 anti-CRLF2 antibody at 20 µg/ml dilution.



ARG59428 anti-CRLF2 antibody WB image

Western blot: Human liver lysate stained with ARG59428 anti-CRLF2 antibody at 0.5, 1 and 2 µg/ml dilution.



ARG59428 anti-CRLF2 antibody IHC-P image

Immunohistochemistry: Paraffin-embedded Human liver stained with ARG59428 anti-CRLF2 antibody at 5 µg/ml dilution.