

## ARG59412 anti-ITLN1 + ITLN2 antibody

Package: 100 µl  
Store at: -20°C

### Summary

Product Description	Rabbit Polyclonal antibody recognizes ITLN1 + ITLN2
Tested Reactivity	Ms, Rat
Tested Application	ICC/IF, IHC-P, WB
Host	Rabbit
Clonality	Polyclonal
Isotype	IgG
Target Name	ITLN1 + ITLN2
Species	Human
Immunogen	Recombinant fusion protein corresponding to aa. 19-313 of Human ITLN1 (NP_060095.2).
Conjugation	Un-conjugated
Alternate Names	hIntL; Omentin; Endothelial lectin HL-1; HL-1; INTL; LFR; omentin; HL1; Intestinal lactoferrin receptor; ITLN-1; Galactofuranose-binding lectin; ITLN; Intelectin-1

### Application Instructions

Application table	Application	Dilution
	ICC/IF	1:50 - 1:200
	IHC-P	1:50 - 1:200
	WB	1:500 - 1:2000
Application Note	* The dilutions indicate recommended starting dilutions and the optimal dilutions or concentrations should be determined by the scientist.	
Positive Control	Rat intestine and Mouse heart	
Observed Size	37 kDa	

### Properties

Form	Liquid
Purification	Affinity purified.
Buffer	PBS (pH 7.3), 0.02% Sodium azide and 50% Glycerol.
Preservative	0.02% Sodium azide
Stabilizer	50% Glycerol
Storage instruction	For continuous use, store undiluted antibody at 2-8°C for up to a week. For long-term storage, aliquot and store at -20°C. Storage in frost free freezers is not recommended. Avoid repeated freeze/thaw cycles. Suggest spin the vial prior to opening. The antibody solution should be gently mixed before use.

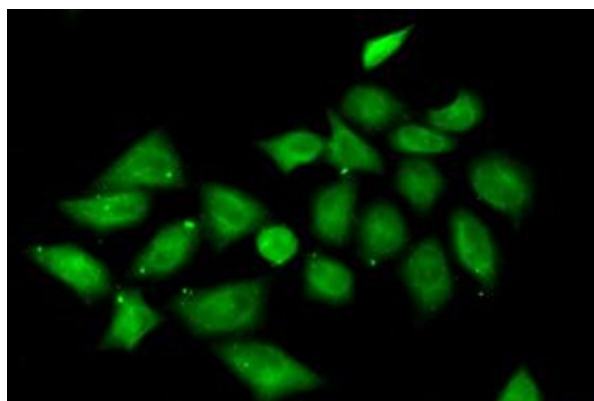
**Note**

For laboratory research only, not for drug, diagnostic or other use.

## Bioinformation

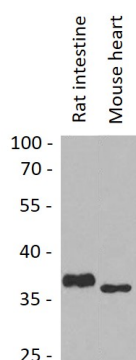
Gene Symbol	ITLN1
Gene Full Name	intelectin 1 (galactofuranose binding)
Function	Has no effect on basal glucose uptake but enhances insulin-stimulated glucose uptake in adipocytes. Increases AKT phosphorylation in the absence and presence of insulin. May play a role in the defense system against microorganisms. May specifically recognize carbohydrate chains of pathogens and bacterial components containing galactofuranosyl residues, in a calcium-dependent manner. May be involved in iron metabolism. [UniProt]
Calculated Mw	35 kDa
PTM	N-glycosylated. [UniProt]
Cellular Localization	Cell membrane; Lipid-anchor, GPI-anchor. Secreted. Note=Enriched in lipid rafts. [UniProt]

## Images



ARG59412 anti-ITLN1 + ITLN2 antibody ICC/IF image

Immunofluorescence: HeLa cells stained with ARG59412 anti-ITLN1 + ITLN2 antibody (green).



ARG59412 anti-ITLN1 + ITLN2 antibody WB image

Western blot: 25 µg of Rat intestine and Mouse heart lysates stained with ARG59412 anti-ITLN1 + ITLN2 antibody at 1:1000 dilution.