

## ARG59410 anti-XPO5 / Exportin 5 antibody

Package: 100 µl  
Store at: -20°C

### Summary

Product Description	Rabbit Polyclonal antibody recognizes XPO5 / Exportin 5
Tested Reactivity	Hu, Ms, Rat
Tested Application	ICC/IF, IP, WB
Host	Rabbit
Clonality	Polyclonal
Isotype	IgG
Target Name	XPO5 / Exportin 5
Species	Human
Immunogen	Recombinant fusion protein corresponding to aa. 925-1204 of Human XPO5 (NP_065801.1).
Conjugation	Un-conjugated
Alternate Names	Exportin-5; Ran-binding protein 21; Exp5; exp5

### Application Instructions

Application table	Application	Dilution
	ICC/IF	1:50 - 1:100
	IP	1:50 - 1:200
	WB	1:500 - 1:2000
Application Note	* The dilutions indicate recommended starting dilutions and the optimal dilutions or concentrations should be determined by the scientist.	
Positive Control	HeLa, NIH/3T3 and PC-12	
Observed Size	125 kDa	

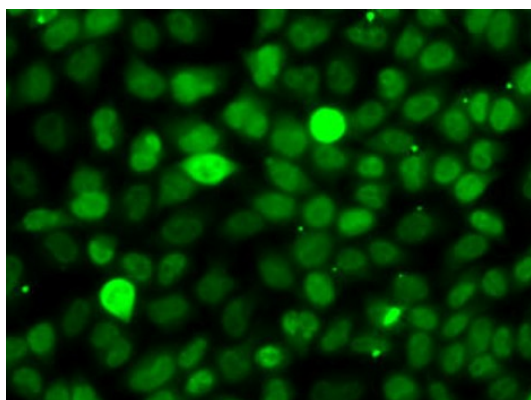
### Properties

Form	Liquid
Purification	Affinity purified.
Buffer	PBS (pH 7.3), 0.02% Sodium azide and 50% Glycerol.
Preservative	0.02% Sodium azide
Stabilizer	50% Glycerol
Storage instruction	For continuous use, store undiluted antibody at 2-8°C for up to a week. For long-term storage, aliquot and store at -20°C. Storage in frost free freezers is not recommended. Avoid repeated freeze/thaw cycles. Suggest spin the vial prior to opening. The antibody solution should be gently mixed before use.

## Bioinformation

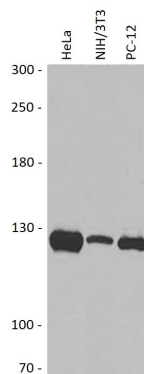
Gene Symbol	XPO5
Gene Full Name	exportin 5
Background	This gene encodes a member of the karyopherin family that is required for the transport of small RNAs and double-stranded RNA-binding proteins from the nucleus to the cytoplasm. The encoded protein translocates cargo through the nuclear pore complex in a RanGTP-dependent process. [provided by RefSeq, Aug 2011]
Function	<p>Mediates the nuclear export of proteins bearing a double-stranded RNA binding domain (dsRBD) and double-stranded RNAs (cargos). XPO5 in the nucleus binds cooperatively to the RNA and to the GTPase Ran in its active GTP-bound form. Proteins containing dsRBDs can associate with this trimeric complex through the RNA. Docking of this complex to the nuclear pore complex (NPC) is mediated through binding to nucleoporins. Upon transit of a nuclear export complex into the cytoplasm, hydrolysis of Ran-GTP to Ran-GDP (induced by RANBP1 and RANGAP1, respectively) cause disassembly of the complex and release of the cargo from the export receptor. XPO5 then returns to the nuclear compartment by diffusion through the nuclear pore complex, to mediate another round of transport. The directionality of nuclear export is thought to be conferred by an asymmetric distribution of the GTP- and GDP-bound forms of Ran between the cytoplasm and nucleus. Overexpression may in some circumstances enhance RNA-mediated gene silencing (RNAi). Mediates nuclear export of isoform 5 of ADAR/ADAR1 in a RanGTP-dependent manner.</p> <p>Mediates the nuclear export of micro-RNA precursors, which form short hairpins. Also mediates the nuclear export of synthetic short hairpin RNAs used for RNA interference, and adenovirus VA1 dsRNA. In some circumstances can also mediate the nuclear export of deacylated and aminoacylated tRNAs. Specifically recognizes dsRNAs that lack a 5'-overhang in a sequence-independent manner, have only a short 3'-overhang, and that have a double-stranded length of at least 15 base-pairs. Binding is dependent on Ran-GTP. [UniProt]</p>
Calculated Mw	136 kDa
Cellular Localization	Nucleus. Cytoplasm. Note=Shuttles between the nucleus and the cytoplasm. [UniProt]

## Images



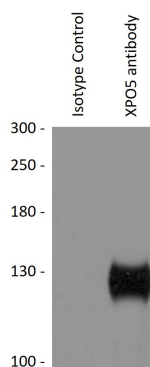
ARG59410 anti-XPO5 / Exportin 5 antibody ICC/IF image

Immunofluorescence: MCF7 cells stained with ARG59410 anti-XPO5 / Exportin 5 antibody (green).



ARG59410 anti-XPO5 / Exportin 5 antibody WB image

Western blot: 25 µg of HeLa, NIH/3T3 and PC-12 cell lysates stained with ARG59410 anti-XPO5 / Exportin 5 antibody.



ARG59410 anti-XPO5 / Exportin 5 antibody IP image

Immunoprecipitation: 200 µg extracts of HeLa cells immunoprecipitated and stained with ARG59410 anti-XPO5 / Exportin 5 antibody at 1:1000 dilution.