

ARG59349 anti-IL23 antibody

Package: 50 µg
Store at: -20°C

Summary

| | |
|--------------------|-------------------------------------------------------------------------------------------------------------------------------------|
| Tested Reactivity | Hu, Ms, Rat |
| Tested Application | ICC/IF, IHC-P, WB |
| Host | Rabbit |
| Clonality | Polyclonal |
| Isotype | IgG |
| Target Name | IL23 |
| Species | Human |
| Immunogen | A 14 amino acid synthetic peptide within the last 50 aa of Human IL23. |
| Conjugation | Un-conjugated |
| Alternate Names | IL-23A; IL-23; IL-23 subunit alpha; IL23P19; IL-23p19; Interleukin-23 subunit alpha; IL-23-A; P19; SGRF; Interleukin-23 subunit p19 |

Application Instructions

| Application table | Application | Dilution |
|-------------------|--------------------------------------------------------------------------------------------------------------------------------------------|---------------|
| | ICC/IF | 10 - 20 µg/ml |
| | IHC-P | 5 µg/ml |
| | WB | 1 µg/ml |
| Application Note | * The dilutions indicate recommended starting dilutions and the optimal dilutions or concentrations should be determined by the scientist. | |
| Positive Control | Raji Cell Lysate | |
| Observed Size | ~ 23 kDa | |

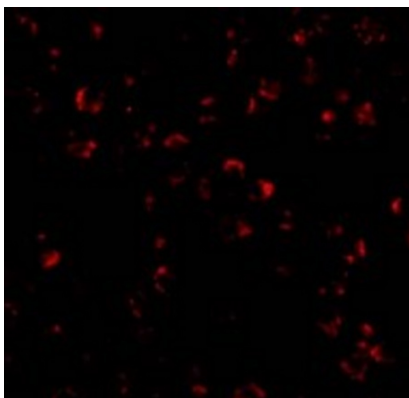
Properties

| | |
|---------------------|----------------------------------------------------------------------------------------------------------------------------------------------------------------------------------------------------------------------------------------------------------------------------------------------------------------------------|
| Form | Liquid |
| Purification | Affinity purification with immunogen. |
| Buffer | PBS and 0.02% Sodium azide |
| Preservative | 0.02% Sodium azide |
| Concentration | 1 mg/ml |
| Storage instruction | For continuous use, store undiluted antibody at 2-8°C for up to a week. For long-term storage, aliquot and store at -20°C or below. Storage in frost free freezers is not recommended. Avoid repeated freeze/thaw cycles. Suggest spin the vial prior to opening. The antibody solution should be gently mixed before use. |

Bioinformation

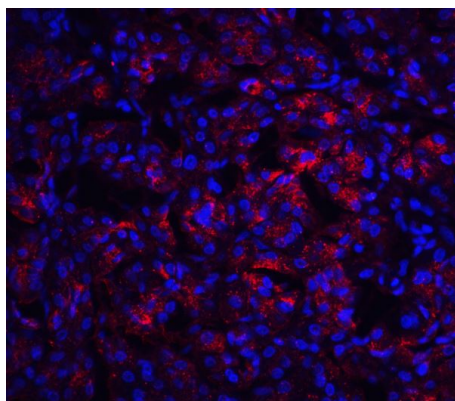
| | |
|-----------------------|----------------------------------------------------------------------------------------------------------------------------------------------------------------------------------------------------------------------------------------------------------------------------------------------------------------------------------------------------------------------------------------------------------------------------------------------------------------------------------------------------------------------------------------------------------------------------------------------------------|
| Gene Symbol | IL23A |
| Gene Full Name | interleukin 23, alpha subunit p19 |
| Background | This gene encodes a subunit of the heterodimeric cytokine interleukin 23 (IL23). IL23 is composed of this protein and the p40 subunit of interleukin 12 (IL12B). The receptor of IL23 is formed by the beta 1 subunit of IL12 (IL12RB1) and an IL23 specific subunit, IL23R. Both IL23 and IL12 can activate the transcription activator STAT4, and stimulate the production of interferon-gamma (IFNG). In contrast to IL12, which acts mainly on naive CD4(+) T cells, IL23 preferentially acts on memory CD4(+) T cells. [provided by RefSeq, Jul 2008] |
| Function | Associates with IL12B to form the IL-23 interleukin, a heterodimeric cytokine which functions in innate and adaptive immunity. IL-23 may constitute with IL-17 an acute response to infection in peripheral tissues. IL-23 binds to a heterodimeric receptor complex composed of IL12RB1 and IL23R, activates the Jak-Stat signaling cascade, stimulates memory rather than naive T-cells and promotes production of proinflammatory cytokines. IL-23 induces autoimmune inflammation and thus may be responsible for autoimmune inflammatory diseases and may be important for tumorigenesis. [UniProt] |
| Calculated Mw | 21 kDa |
| Cellular Localization | Secreted. Note=Secreted upon association with IL12B. [UniProt] |

Images



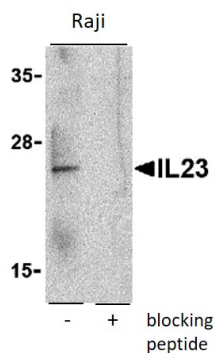
ARG59349 anti-IL23 antibody IF image

Immunofluorescence: Raji cells stained with ARG59349 anti-IL23 antibody at 20 µg/ml dilution.



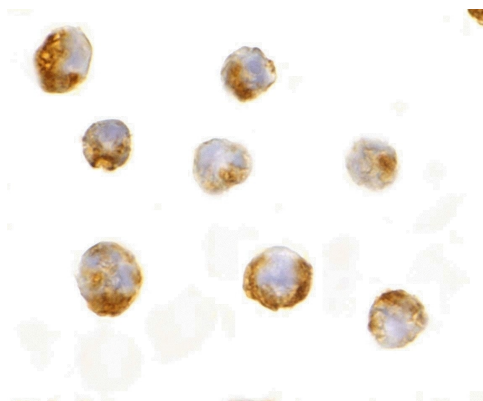
ARG59349 anti-IL23 antibody IHC-P image

Immunohistochemistry: Paraffin-embedded Human pancreas stained with ARG59349 anti-IL23 antibody (red) at 20 µg/ml dilution. Blue: DAPI staining.



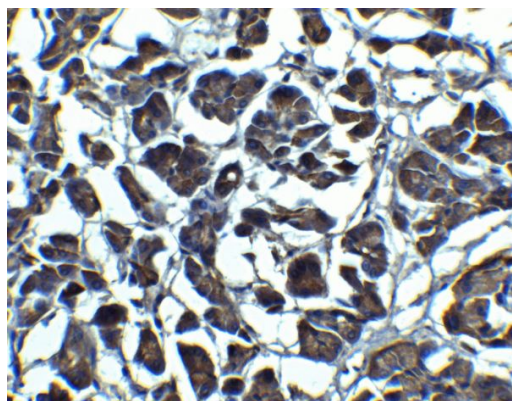
ARG59349 anti-IL23 antibody WB image

Western blot: Raji cell lysate stained with ARG59349 anti-IL23 antibody at 1 $\mu\text{g}/\text{ml}$ in the absence and presence of blocking peptide.



ARG59349 anti-IL23 antibody ICC image

Immunocytochemistry: Raji cells stained with ARG59349 anti-IL23 antibody at 10 $\mu\text{g}/\text{ml}$ dilution.



ARG59349 anti-IL23 antibody IHC-P image

Immunohistochemistry: Paraffin-embedded Human pancreas stained with ARG59349 anti-IL23 antibody at 5 $\mu\text{g}/\text{ml}$ dilution.