

ARG59255 anti-DRAM antibody

Package: 50 µg
Store at: -20°C

Summary

Product Description	Rabbit Polyclonal antibody recognizes DRAM
Tested Reactivity	Hu, Ms
Tested Application	IHC-P, WB
Host	Rabbit
Clonality	Polyclonal
Isotype	IgG
Target Name	DRAM
Species	Human
Immunogen	A 16 amino acid synthetic peptide within aa. 30 - 80 of Human DRAM.
Conjugation	Un-conjugated
Alternate Names	DRAM; Damage-regulated autophagy modulator; DNA damage-regulated autophagy modulator protein 1

Application Instructions

Application table	Application	Dilution
	IHC-P	2 - 20 µg/ml
	WB	0.5 - 2 µg/ml
Application Note	* The dilutions indicate recommended starting dilutions and the optimal dilutions or concentrations should be determined by the scientist.	
Positive Control	K562	
Observed Size	~ 30 kDa	

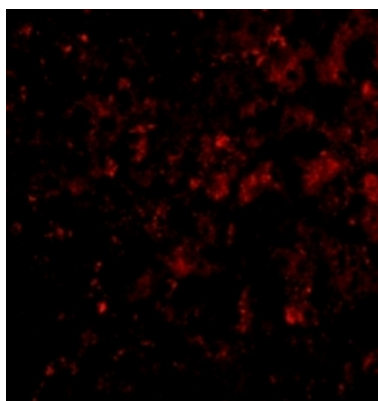
Properties

Form	Liquid
Purification	Affinity purification with immunogen.
Buffer	PBS and 0.02% Sodium azide.
Preservative	0.02% Sodium azide
Concentration	1 mg/ml
Storage instruction	For continuous use, store undiluted antibody at 2-8°C for up to a week. For long-term storage, aliquot and store at -20°C or below. Storage in frost free freezers is not recommended. Avoid repeated freeze/thaw cycles. Suggest spin the vial prior to opening. The antibody solution should be gently mixed before use.

Bioinformation

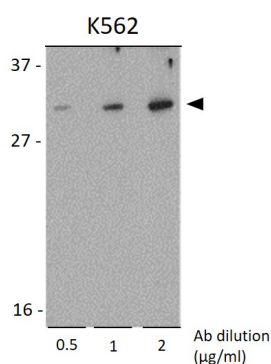
Gene Symbol	DRAM1
Gene Full Name	DNA-damage regulated autophagy modulator 1
Background	This gene is regulated as part of the p53 tumor suppressor pathway. The gene encodes a lysosomal membrane protein that is required for the induction of autophagy by the pathway. Decreased transcriptional expression of this gene is associated with various tumors. This gene has a pseudogene on chromosome 4. [provided by RefSeq, Jul 2008]
Function	Lysosomal modulator of autophagy that plays a central role in p53/TP53-mediated apoptosis. Not involved in p73/TP73-mediated autophagy. [UniProt]
Calculated Mw	26 kDa
Cellular Localization	Lysosome membrane; Multi-pass membrane protein. [UniProt]

Images



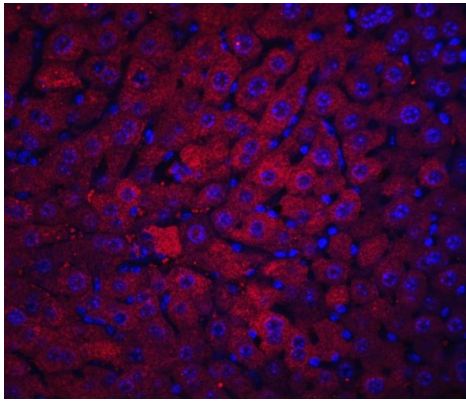
ARG59255 anti-DRAM antibody IHC image

Immunohistochemistry: Human liver tissue stained with ARG59255 anti-DRAM antibody at 20 µg/ml dilution.



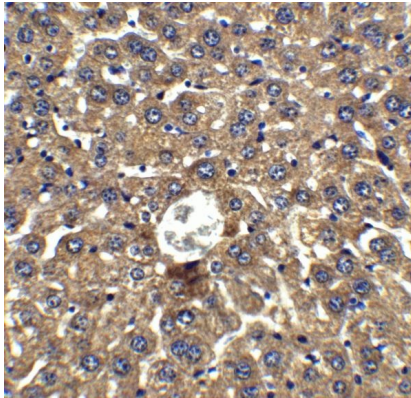
ARG59255 anti-DRAM antibody WB image

Western blot: K562 cell lysate stained with ARG59255 anti-DRAM antibody at 0.5, 1 and 2 µg/ml dilution.



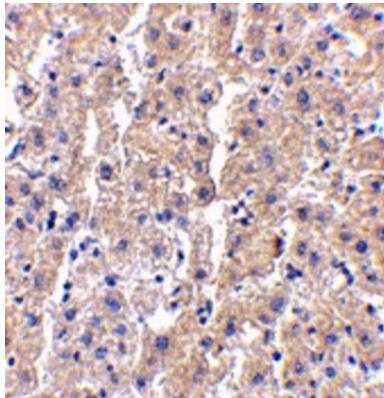
ARG59255 anti-DRAM antibody IHC image

Immunohistochemistry: Mouse liver tissue stained with ARG59255 anti-DRAM antibody at 20 $\mu\text{g}/\text{ml}$ dilution.



ARG59255 anti-DRAM antibody IHC-P image

Immunohistochemistry: Paraffin-embedded Mouse liver tissue stained with ARG59255 anti-DRAM antibody at 2 $\mu\text{g}/\text{ml}$ dilution.



ARG59255 anti-DRAM antibody IHC-P image

Immunohistochemistry: Paraffin-embedded Human liver tissue stained with ARG59255 anti-DRAM antibody at 2.5 $\mu\text{g}/\text{ml}$ dilution.