

ARG59227 anti-SKAP55 antibody

Package: 50 µg
Store at: -20°C

Summary

Product Description	Rabbit Polyclonal antibody recognizes SKAP55
Tested Reactivity	Rat
Predict Reactivity	Hu, Hm
Tested Application	IHC-P
Host	Rabbit
Clonality	Polyclonal
Isotype	IgG
Target Name	SKAP55
Species	Human
Immunogen	Synthetic peptide corresponding to aa. 163-189 of Human SKAP55. (RMAPHLRRDSKKESCFELTSQDRRSYE)
Conjugation	Un-conjugated
Alternate Names	Src family-associated phosphoprotein 1; SCAP1; Src kinase-associated phosphoprotein 1; SKAP55; pp55; Src kinase-associated phosphoprotein of 55 kDa; HEL-S-81p; SKAP-55

Application Instructions

Application table	Application	Dilution
	IHC-P	0.5 - 1 µg/ml
Application Note	IHC-P: Antigen Retrieval: By heat mediation. * The dilutions indicate recommended starting dilutions and the optimal dilutions or concentrations should be determined by the scientist.	

Properties

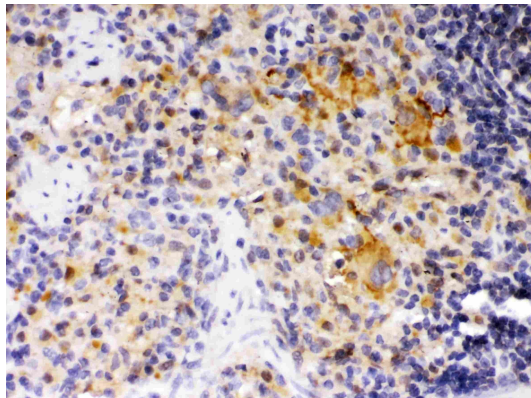
Form	Liquid
Purification	Affinity purification with immunogen.
Buffer	0.9% NaCl, 0.2% Na ₂ HPO ₄ , 0.05% Sodium azide and 5% BSA.
Preservative	0.05% Sodium azide
Stabilizer	5% BSA
Concentration	0.5 mg/ml
Storage instruction	For continuous use, store undiluted antibody at 2-8°C for up to a week. For long-term storage, aliquot and store at -20°C or below. Storage in frost free freezers is not recommended. Avoid repeated freeze/thaw cycles. Suggest spin the vial prior to opening. The antibody solution should be gently mixed before use.

Note For laboratory research only, not for drug, diagnostic or other use.

Bioinformation

Gene Symbol	SKAP1
Gene Full Name	src kinase associated phosphoprotein 1
Background	This gene encodes a T cell adaptor protein, a class of intracellular molecules with modular domains capable of recruiting additional proteins but that exhibit no intrinsic enzymatic activity. The encoded protein contains a unique N-terminal region followed by a PH domain and C-terminal SH3 domain. Along with the adhesion and degranulation-promoting adaptor protein, the encoded protein plays a critical role in inside-out signaling by coupling T-cell antigen receptor stimulation to the activation of integrins. [provided by RefSeq, Jul 2008]
Function	Positively regulates T-cell receptor signaling by enhancing the MAP kinase pathway. Required for optimal conjugation between T-cells and antigen-presenting cells by promoting the clustering of integrin ITGAL on the surface of T-cells. May be involved in high affinity immunoglobulin epsilon receptor signaling in mast cells. [UniProt]
Calculated Mw	41 kDa
PTM	Phosphorylated on tyrosines. Phosphorylation by FYN on Tyr-271 is required for GRB2 interaction. Phosphorylation by FYN on Tyr-295 abolishes interaction with FYB. Tyr-232 is dephosphorylated by PTPRC (Probable). [UniProt]
Cellular Localization	Cytoplasm. Nucleus. Cell membrane. Note=Upon T-cell stimulation, translocates to lipid rafts at the cell membrane. [UniProt]

Images



ARG59227 anti-SKAP55 antibody IHC-P image

Immunohistochemistry: Paraffin-embedded Rat spleen stained with ARG59227 anti-SKAP55 antibody at 1 µg/ml dilution.