

ARG59203 anti-LPAR6 / P2RY5 antibody

Package: 50 µg
Store at: -20°C

Summary

Product Description	Rabbit Polyclonal antibody recognizes LPAR6 / P2RY5
Tested Reactivity	Hu
Predict Reactivity	Ms, Rat
Tested Application	FACS, WB
Host	Rabbit
Clonality	Polyclonal
Isotype	IgG
Target Name	LPAR6 / P2RY5
Species	Human
Immunogen	Synthetic peptide corresponding to a sequence of Human LPAR6 / P2RY5. (DTIQNSIKMKNWSVRRSDFRFSEVHGAENFIQHNLQTLK)
Conjugation	Un-conjugated
Alternate Names	LAH3; P2Y purinoceptor 5; Oleoyl-L-alpha-lysophosphatidic acid receptor; Purinergic receptor 5; Lysophosphatidic acid receptor 6; P2Y5; LPA receptor 6; ARWH1; RB intron encoded G-protein coupled receptor; HYPT8; LPA-6; P2RY5

Application Instructions

Application table	Application	Dilution
	FACS	1:150 - 1:500
	WB	0.1 - 0.5 µg/ml
Application Note	* The dilutions indicate recommended starting dilutions and the optimal dilutions or concentrations should be determined by the scientist.	

Properties

Form	Liquid
Purification	Affinity purification with immunogen.
Buffer	0.9% NaCl, 0.2% Na ₂ HPO ₄ , 0.05% Sodium azide and 4% Trehalose.
Preservative	0.05% Sodium azide
Stabilizer	4% Trehalose
Concentration	0.5 mg/ml
Storage instruction	For continuous use, store undiluted antibody at 2-8°C for up to a week. For long-term storage, aliquot and store at -20°C or below. Storage in frost free freezers is not recommended. Avoid repeated freeze/thaw cycles. Suggest spin the vial prior to opening. The antibody solution should be gently mixed

before use.

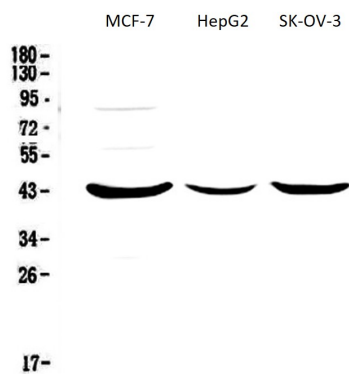
Note

For laboratory research only, not for drug, diagnostic or other use.

Bioinformation

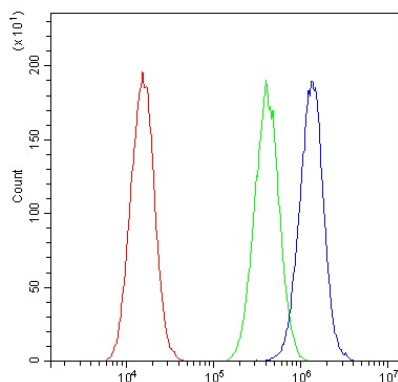
Gene Symbol	LPAR6
Gene Full Name	lysophosphatidic acid receptor 6
Background	The protein encoded by this gene belongs to the family of G-protein coupled receptors, that are preferentially activated by adenosine and uridine nucleotides. This gene aligns with an internal intron of the retinoblastoma susceptibility gene in the reverse orientation. Alternative splicing results in multiple transcript variants. [provided by RefSeq, Jun 2009]
Function	Binds to oleoyl-L-alpha-lysophosphatidic acid (LPA). Intracellular cAMP is involved in the receptor activation. Important for the maintenance of hair growth and texture. [UniProt]
Calculated Mw	39 kDa
Cellular Localization	Cell membrane; Multi-pass membrane protein. [UniProt]

Images



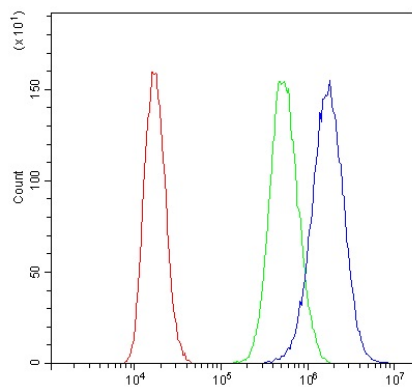
ARG59203 anti-LPAR6 / P2RY5 antibody WB image

Western blot: 50 µg of samples under reducing conditions. MCF-7, HepG2 and SK-OV-3 whole cell lysates stained with ARG59203 anti-LPAR6 / P2RY5 antibody at 0.5 µg/ml, overnight at 4°C.



ARG59203 anti-LPAR6 / P2RY5 antibody FACS image

Flow Cytometry: A549 cells were blocked with 10% normal goat serum and then stained with ARG59203 anti-LPAR6 / P2RY5 antibody (blue) at 1 µg/10⁶ cells for 30 min at 20°C, followed by incubation with DyLight®488 labelled secondary antibody. Isotype control antibody (green) was rabbit IgG (1 µg/10⁶ cells) used under the same conditions. Unlabelled sample (red) was also used as a control.



ARG59203 anti-LPAR6 / P2RY5 antibody FACS image

Flow Cytometry: PC-3 cells were blocked with 10% normal goat serum and then stained with ARG59203 anti-LPAR6 / P2RY5 antibody (blue) at $1\text{ }\mu\text{g}/10^6$ cells for 30 min at 20°C , followed by incubation with DyLight®488 labelled secondary antibody. Isotype control antibody (green) was rabbit IgG ($1\text{ }\mu\text{g}/10^6$ cells) used under the same conditions. Unlabelled sample (red) was also used as a control.