

## ARG59154 anti-NAE1 / APPBP1 antibody

Package: 100 µl  
Store at: -20°C

### Summary

Product Description	Rabbit Polyclonal antibody recognizes NAE1 / APPBP1
Tested Reactivity	Hu, Ms, Rat
Tested Application	WB
Host	Rabbit
Clonality	Polyclonal
Isotype	IgG
Target Name	NAE1 / APPBP1
Species	Human
Immunogen	Recombinant fusion protein corresponding to aa. 1-220 of Human NAE1 (NP_003896.1).
Conjugation	Un-conjugated
Alternate Names	APP-BP1; APPBP1; A-116A10.1; Amyloid protein-binding protein 1; HPP1; Amyloid beta precursor protein-binding protein 1, 59 kDa; NEDD8-activating enzyme E1 regulatory subunit; ula-1; Proto-oncogene protein 1

### Application Instructions

Application table	Application	Dilution
	WB	1:1000 - 1:4000
Application Note	* The dilutions indicate recommended starting dilutions and the optimal dilutions or concentrations should be determined by the scientist.	
Positive Control	HL-60	
Observed Size	60 kDa	

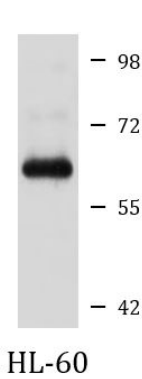
### Properties

Form	Liquid
Purification	Affinity purified.
Buffer	PBS (pH 7.3), 0.02% Sodium azide and 50% Glycerol.
Preservative	0.02% Sodium azide
Stabilizer	50% Glycerol
Storage instruction	For continuous use, store undiluted antibody at 2-8°C for up to a week. For long-term storage, aliquot and store at -20°C. Storage in frost free freezers is not recommended. Avoid repeated freeze/thaw cycles. Suggest spin the vial prior to opening. The antibody solution should be gently mixed before use.
Note	For laboratory research only, not for drug, diagnostic or other use.

Bioinformation

Gene Symbol	NAE1
Gene Full Name	NEDD8 activating enzyme E1 subunit 1
Background	The protein encoded by this gene binds to the beta-amyloid precursor protein. Beta-amyloid precursor protein is a cell surface protein with signal-transducing properties, and it is thought to play a role in the pathogenesis of Alzheimer's disease. In addition, the encoded protein can form a heterodimer with UBE1C and bind and activate NEDD8, a ubiquitin-like protein. This protein is required for cell cycle progression through the S/M checkpoint. Three transcript variants encoding different isoforms have been found for this gene. [provided by RefSeq, Jul 2008]
Function	Regulatory subunit of the dimeric UBA3-NAE1 E1 enzyme. E1 activates NEDD8 by first adenylating its C-terminal glycine residue with ATP, thereafter linking this residue to the side chain of the catalytic cysteine, yielding a NEDD8-UBA3 thioester and free AMP. E1 finally transfers NEDD8 to the catalytic cysteine of UBE2M. Necessary for cell cycle progression through the S-M checkpoint. Overexpression of NAE1 causes apoptosis through deregulation of NEDD8 conjugation. [UniProt]
Calculated Mw	60 kDa
PTM	Ubiquitinated by TRIP12, leading to its degradation by the proteasome. [UniProt]
Cellular Localization	Cell membrane. Note=Colocalizes with APP in lipid rafts. [UniProt]

Images



ARG59154 anti-NAE1 / APPBP1 antibody WB image

Western blot: 25 µg of HL-60 cell lysate stained with ARG59154 anti-NAE1 / APPBP1 antibody at 1:1000 dilution.