

## ARG59121 anti-SDHA antibody

Package: 50 µg  
Store at: -20°C

### Summary

Product Description	Rabbit Polyclonal antibody recognizes SDHA
Tested Reactivity	Hu, Ms, Rat
Tested Application	WB
Host	Rabbit
Clonality	Polyclonal
Isotype	IgG
Target Name	SDHA
Species	Human
Immunogen	Recombinant protein corresponding to S44-L380 of Human SDHA.
Conjugation	Un-conjugated
Alternate Names	FP; Fp; SDH1; PGL5; SDH2; Flavoprotein subunit of complex II; Succinate dehydrogenase [ubiquinone] flavoprotein subunit, mitochondrial; CMD1GG; EC 1.3.5.1; SDHF

### Application Instructions

Application table	Application	Dilution
	WB	0.1 - 0.5 µg/ml
Application Note	* The dilutions indicate recommended starting dilutions and the optimal dilutions or concentrations should be determined by the scientist.	

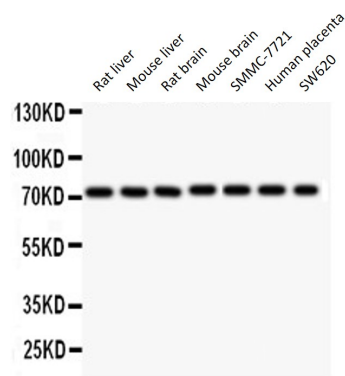
### Properties

Form	Liquid
Purification	Affinity purification with immunogen.
Buffer	0.9% NaCl, 0.2% Na <sub>2</sub> HPO <sub>4</sub> , 0.05% Sodium azide and 5% BSA.
Preservative	0.05% Sodium azide
Stabilizer	5% BSA
Concentration	0.5 mg/ml
Storage instruction	For continuous use, store undiluted antibody at 2-8°C for up to a week. For long-term storage, aliquot and store at -20°C or below. Storage in frost free freezers is not recommended. Avoid repeated freeze/thaw cycles. Suggest spin the vial prior to opening. The antibody solution should be gently mixed before use.
Note	For laboratory research only, not for drug, diagnostic or other use.

Bioinformation

Gene Symbol	SDHA
Gene Full Name	succinate dehydrogenase complex, subunit A, flavoprotein (Fp)
Background	This gene encodes a major catalytic subunit of succinate-ubiquinone oxidoreductase, a complex of the mitochondrial respiratory chain. The complex is composed of four nuclear-encoded subunits and is localized in the mitochondrial inner membrane. Mutations in this gene have been associated with a form of mitochondrial respiratory chain deficiency known as Leigh Syndrome. A pseudogene has been identified on chromosome 3q29. Alternatively spliced transcript variants encoding different isoforms have been found for this gene. [provided by RefSeq, Jun 2014]
Function	Flavoprotein (FP) subunit of succinate dehydrogenase (SDH) that is involved in complex II of the mitochondrial electron transport chain and is responsible for transferring electrons from succinate to ubiquinone (coenzyme Q). Can act as a tumor suppressor. [UniProt]
Calculated Mw	73 kDa
PTM	Phosphorylation at Tyr-215 is important for efficient electron transfer in complex II and the prevention of ROS generation.  Acetylated. Deacetylated by SIRT3. [UniProt]
Cellular Localization	Mitochondrion inner membrane; Peripheral membrane protein; Matrix side. [UniProt]

Images



ARG59121 anti-SDHA antibody WB image

Western blot: 50 µg of Rat liver, 50 µg of Mouse liver, 50 µg of Rat brain, 50 µg of Mouse brain, 40 µg of SMMC-7721, 50 µg of Human placenta and 40 µg of SW620 lysates stained with ARG59121 anti-SDHA antibody at 0.5 µg/ml dilution.