

## ARG59053 anti-NUCB2 / Nucleobindin 2 antibody

Package: 50 µg  
Store at: -20°C

### Summary

Product Description	Rabbit Polyclonal antibody recognizes NUCB2 / Nucleobindin 2
Tested Reactivity	Rat
Predict Reactivity	Hu
Tested Application	IHC-P, WB
Specificity	This antibody is predicted to not cross-react with NUCB1.
Host	Rabbit
Clonality	Polyclonal
Isotype	IgG
Target Name	NUCB2 / Nucleobindin 2
Species	Human
Immunogen	Synthetic peptide corresponding to a sequence of 16 aa from Human NUCB2 / Nucleobindin 2.
Conjugation	Un-conjugated
Alternate Names	HEL-S-109; NEFA; Nucleobindin-2; Gastric cancer antigen Zg4; Prepronesfatin; DNA-binding protein NEFA

### Application Instructions

Application table	Application	Dilution
	IHC-P	2 - 20 µg/ml
	WB	0.5 - 1 µg/ml
Application Note	* The dilutions indicate recommended starting dilutions and the optimal dilutions or concentrations should be determined by the scientist.	
Positive Control	Rat brain	
Observed Size	54 kDa	

### Properties

Form	Liquid
Purification	Affinity purification with immunogen.
Buffer	PBS and 0.02% Sodium azide.
Preservative	0.02% Sodium azide
Concentration	1 mg/ml
Storage instruction	For continuous use, store undiluted antibody at 2-8°C for up to a week. For long-term storage, aliquot and store at -20°C or below. Storage in frost free freezers is not recommended. Avoid repeated

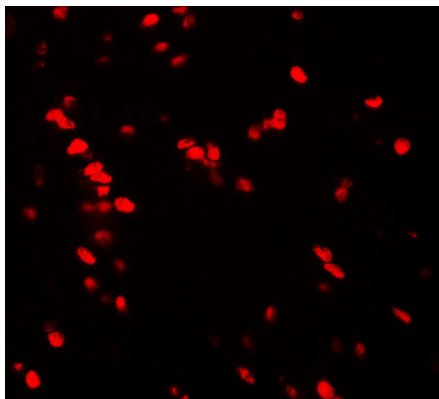
freeze/thaw cycles. Suggest spin the vial prior to opening. The antibody solution should be gently mixed before use.

**Note** For laboratory research only, not for drug, diagnostic or other use.

## Bioinformation

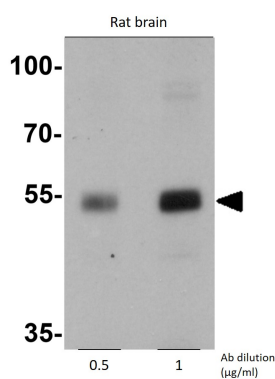
Gene Symbol	NUCB2
Gene Full Name	nucleobindin 2
Background	This gene encodes a protein with a suggested role in calcium level maintenance, eating regulation in the hypothalamus, and release of tumor necrosis factor from vascular endothelial cells. This protein binds calcium and has EF-folding domains. [provided by RefSeq, Oct 2011]
Function	Calcium-binding protein. May have a role in calcium homeostasis.  Nesfatin-1: Anorexigenic peptide, seems to play an important role in hypothalamic pathways regulating food intake and energy homeostasis, acting in a leptin-independent manner. May also exert hypertensive roles and modulate blood pressure through directly acting on peripheral arterial resistance (By similarity). [UniProt]
Calculated Mw	50 kDa
Cellular Localization	Golgi apparatus. Membrane; Peripheral membrane protein. Cytoplasm. Secreted. Endoplasmic reticulum. Nucleus envelope. Note=Golgi retention is mediated by its N-terminal region. Nesfatin-1: Secreted. [UniProt]

## Images



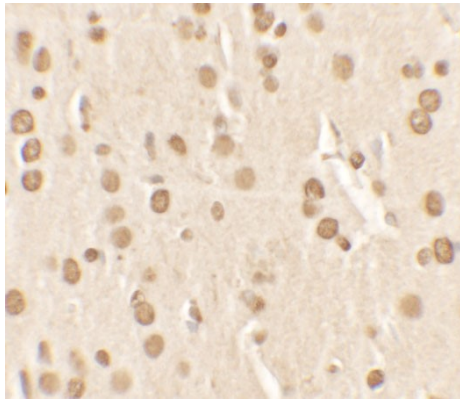
ARG59053 anti-NUCB2 / Nucleobindin 2 antibody IHC-P image

Immunohistochemistry: Paraffin-embedded Rat brain tissue stained with ARG59053 anti-NUCB2 / Nucleobindin 2 antibody at 20 µg/ml dilution.



ARG59053 anti-NUCB2 / Nucleobindin 2 antibody WB image

Western blot: Rat brain tissue lysate stained with ARG59053 anti-NUCB2 / Nucleobindin 2 antibody at 0.5 or 1 µg/ml dilution.



ARG59053 anti-NUCB2 / Nucleobindin 2 antibody IHC-P image

Immunohistochemistry: Paraffin-embedded Rat brain tissue stained with ARG59053 anti-NUCB2 / Nucleobindin 2 antibody at 2.5 µg/ml dilution.