

ARG59026 anti-Annexin A2 antibody

Package: 50 µg
Store at: -20°C

Summary

Product Description	Rabbit Polyclonal antibody recognizes Annexin A2
Tested Reactivity	Hu, Ms, Rat
Predict Reactivity	Hm
Tested Application	IHC-P, WB
Host	Rabbit
Clonality	Polyclonal
Isotype	IgG
Target Name	Annexin A2
Species	Human
Immunogen	Synthetic peptide corresponding to aa. 121-141 of Human Annexin A2 (RAEDGSVIDYELIDQDARDLY).
Conjugation	Un-conjugated
Alternate Names	Placental anticoagulant protein IV; LPC2; Protein I; Calpactin-1 heavy chain; Calpactin I heavy chain; p36; CAL1H; ANX2; LPC2D; Lipocortin II; ANX2L4; HEL-S-270; LIP2; Annexin II; Annexin A2; Annexin-2; P36; Chromobindin-8; PAP-IV

Application Instructions

Application table	Application	Dilution
	IHC-P	0.5 - 1 µg/ml
	WB	0.1 - 0.5 µg/ml
Application Note	IHC-P: Antigen Retrieval: By heat mediation. * The dilutions indicate recommended starting dilutions and the optimal dilutions or concentrations should be determined by the scientist.	

Properties

Form	Liquid
Purification	Affinity purification with immunogen.
Buffer	0.2% Na ₂ HPO ₄ , 0.9% NaCl, 0.05% Thimerosal, 0.05% Sodium azide and 5% BSA.
Preservative	0.05% Thimerosal and 0.05% Sodium azide
Stabilizer	5% BSA
Concentration	0.5 mg/ml
Storage instruction	For continuous use, store undiluted antibody at 2-8°C for up to a week. For long-term storage, aliquot and store at -20°C or below. Storage in frost free freezers is not recommended. Avoid repeated freeze/thaw cycles. Suggest spin the vial prior to opening. The antibody solution should be gently mixed

before use.

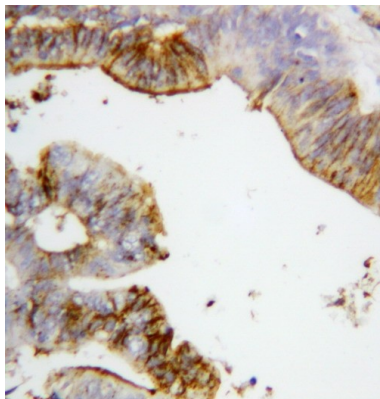
Note

For laboratory research only, not for drug, diagnostic or other use.

Bioinformation

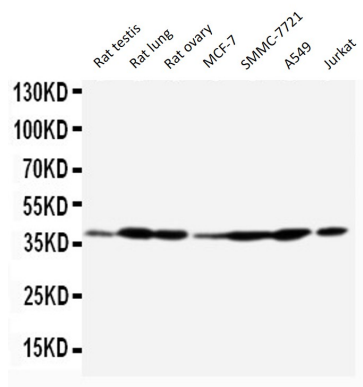
Gene Symbol	ANXA2
Gene Full Name	annexin A2
Background	This gene encodes a member of the annexin family. Members of this calcium-dependent phospholipid-binding protein family play a role in the regulation of cellular growth and in signal transduction pathways. This protein functions as an autocrine factor which heightens osteoclast formation and bone resorption. This gene has three pseudogenes located on chromosomes 4, 9 and 10, respectively. Multiple alternatively spliced transcript variants encoding different isoforms have been found for this gene. [provided by RefSeq, Jul 2008]
Function	Calcium-regulated membrane-binding protein whose affinity for calcium is greatly enhanced by anionic phospholipids. It binds two calcium ions with high affinity. May be involved in heat-stress response. Inhibits PCSK9-enhanced LDLR degradation, probably reduces PCSK9 protein levels via a translational mechanism but also competes with LDLR for binding with PCSK9. [UniProt]
Calculated Mw	39 kDa
PTM	Phosphorylation of Tyr-24 enhances heat stress-induced translocation to the cell surface. ISGylated. [UniProt]
Cellular Localization	Secreted, extracellular space, extracellular matrix, basement membrane. Melanosome. In the lamina beneath the plasma membrane. Identified by mass spectrometry in melanosome fractions from stage I to stage IV. Translocated from the cytoplasm to the cell surface through a Golgi-independent mechanism. [UniProt]

Images



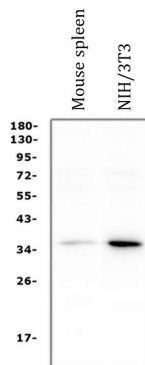
ARG59026 anti-Annexin A2 antibody IHC-P image

Immunohistochemistry: Paraffin-embedded Human intestinal cancer tissue stained with ARG59026 anti-Annexin A2 antibody.



ARG59026 anti-Annexin A2 antibody WB image

Western blot: Rat testis, Rat lung, Rat ovary, MCF-7, SMMC-7721, A549 and Jurkat lysates stained with ARG59026 anti-Annexin A2 antibody.



ARG59026 anti-Annexin A2 antibody WB image

Western blot: 50 µg of sample under reducing conditions. Mouse spleen and NIH/3T3 whole cell lysates stained with ARG59026 anti-Annexin A2 antibody at 0.5 µg/ml dilution, overnight at 4°C.