

ARG59025 anti-Elafin antibody [C7]

Package: 50 µg
Store at: -20°C

Summary

Product Description	Mouse Monoclonal antibody [C7] recognizes Elafin
Tested Reactivity	Hu
Tested Application	IHC-P
Host	Mouse
Clonality	Monoclonal
Clone	C7
Isotype	IgG1
Target Name	Elafin
Species	Human
Immunogen	Recombinant protein corresponding to A61-Q117 of Human Elafin.
Conjugation	Un-conjugated
Alternate Names	Protease inhibitor WAP3; cementoin; WFDC14; Skin-derived antileukoproteinase; WAP four-disulfide core domain protein 14; SKALP; Elafin; Elastase-specific inhibitor; WAP3; Peptidase inhibitor 3; ESI; PI-3

Application Instructions

Application table	Application	Dilution
	IHC-P	0.5 - 1 µg/ml
Application Note	IHC-P: Antigen Retrieval: Heat mediated was performed in Citrate buffer (pH 6.0) for 20 min. * The dilutions indicate recommended starting dilutions and the optimal dilutions or concentrations should be determined by the scientist.	

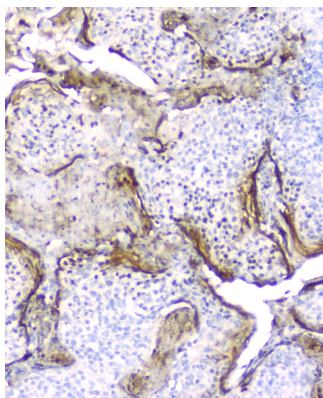
Properties

Form	Liquid
Buffer	0.2% Na ₂ HPO ₄ , 0.9% NaCl, 0.05% Sodium azide and 4% Trehalose.
Preservative	0.05% Sodium azide
Stabilizer	4% Trehalose
Concentration	0.5 mg/ml
Storage instruction	For continuous use, store undiluted antibody at 2-8°C for up to a week. For long-term storage, aliquot and store at -20°C or below. Storage in frost free freezers is not recommended. Avoid repeated freeze/thaw cycles. Suggest spin the vial prior to opening. The antibody solution should be gently mixed before use.
Note	For laboratory research only, not for drug, diagnostic or other use.

Bioinformation

Gene Symbol	PI3
Gene Full Name	peptidase inhibitor 3, skin-derived
Background	This gene encodes an elastase-specific inhibitor that functions as an antimicrobial peptide against Gram-positive and Gram-negative bacteria, and fungal pathogens. The protein contains a WAP-type four-disulfide core (WFDC) domain, and is thus a member of the WFDC domain family. Most WFDC gene members are localized to chromosome 20q12-q13 in two clusters: centromeric and telomeric. This gene belongs to the centromeric cluster. Expression of this gene is upregulated by bacterial lipopolysaccharides and cytokines. [provided by RefSeq, Oct 2014]
Function	Neutrophil and pancreatic elastase-specific inhibitor of skin. It may prevent elastase-mediated tissue proteolysis. [UniProt]
Calculated Mw	12 kDa
Cellular Localization	Secreted. [UniProt]

Images



ARG59025 anti-Elafin antibody [C7] IHC-P image

Immunohistochemistry: Paraffin-embedded Human tonsil tissue. Antigen Retrieval: Heat mediated was performed in Citrate buffer (pH 6.0, epitope retrieval solution) for 20 min. The tissue section was blocked with 10% goat serum. The tissue section was then stained with ARG59025 anti-Elafin antibody [C7] at 2 µg/ml dilution, overnight at 4°C.