

## ARG59022 anti-CCN3 antibody

Package: 50 µg  
Store at: -20°C

### Summary

Product Description	Rabbit Polyclonal antibody recognizes CCN3
Tested Reactivity	Hu, Rat
Tested Application	FACS, ICC/IF, IHC-P, WB
Host	Rabbit
Clonality	Polyclonal
Isotype	IgG
Target Name	CCN3
Species	Human
Immunogen	Synthetic peptide corresponding to aa. 334-357 of Human CCN3 (HTNCPKNNEAFLQELELKTRGKM).
Conjugation	Un-conjugated
Alternate Names	Insulin-like growth factor-binding protein 9; Protein NOV homolog; IGFBP-9; NOVh; IBP-9; CCN3; Nephroblastoma-overexpressed gene protein homolog; CCN family member 3; IGF-binding protein 9; IGFBP9; NovH

### Application Instructions

Application table	Application	Dilution
	FACS	1:150 - 1:500
	ICC/IF	1:200 - 1:1000
	IHC-P	0.5 - 1 µg/ml
	WB	0.1 - 0.5 µg/ml
Application Note	IHC-P: Antigen Retrieval: Heat mediation was performed in Citrate buffer (pH 6.0) for 20 min. * The dilutions indicate recommended starting dilutions and the optimal dilutions or concentrations should be determined by the scientist.	

### Properties

Form	Liquid
Purification	Affinity purification with immunogen.
Buffer	0.2% Na <sub>2</sub> HPO <sub>4</sub> , 0.9% NaCl, 0.05% Sodium azide and 5% BSA.
Preservative	0.05% Sodium azide
Stabilizer	5% BSA
Concentration	0.5 mg/ml
Storage instruction	For continuous use, store undiluted antibody at 2-8°C for up to a week. For long-term storage, aliquot and store at -20°C or below. Storage in frost free freezers is not recommended. Avoid repeated

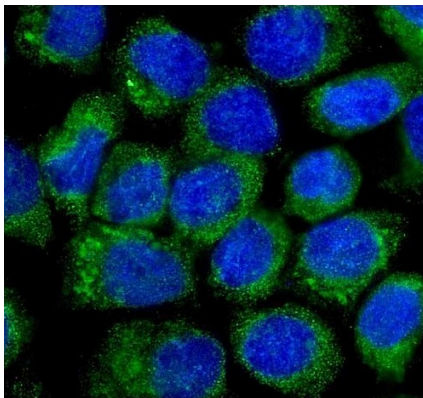
freeze/thaw cycles. Suggest spin the vial prior to opening. The antibody solution should be gently mixed before use.

**Note** For laboratory research only, not for drug, diagnostic or other use.

## Bioinformation

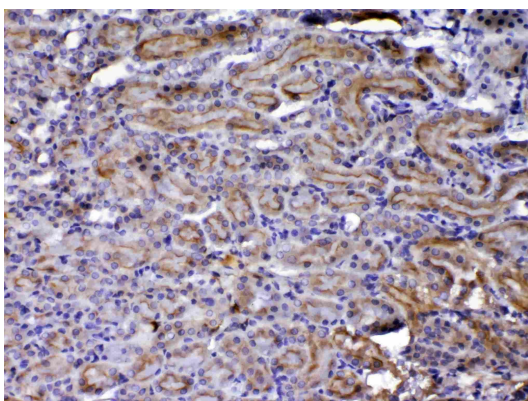
Gene Symbol	NOV
Gene Full Name	nephroblastoma overexpressed
Background	The protein encoded by this gene is a small secreted cysteine-rich protein and a member of the CCN family of regulatory proteins. CNN family proteins associate with the extracellular matrix and play an important role in cardiovascular and skeletal development, fibrosis and cancer development. [provided by RefSeq, Feb 2009]
Function	Immediate-early protein likely to play a role in cell growth regulation. [UniProt]
Calculated Mw	39 kDa
Cellular Localization	Secreted. [UniProt]

## Images



ARG59022 anti-CCN3 antibody ICC/IF image

Immunofluorescence: A431 cells were blocked with 10% goat serum and then stained with ARG59022 anti-CCN3 antibody (green) at 2 µg/ml dilution, overnight at 4°C. DAPI (blue) for nuclear staining.



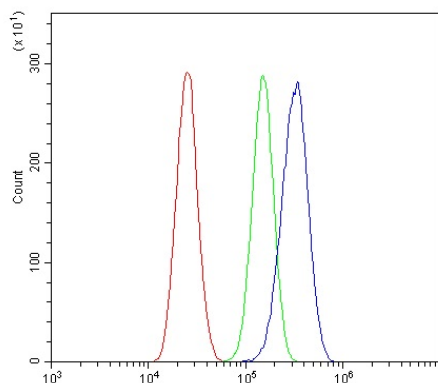
ARG59022 anti-CCN3 antibody IHC-P image

Immunohistochemistry: Paraffin-embedded Rat kidney tissue. Antigen Retrieval: Heat mediated was performed in Citrate buffer (pH 6.0, epitope retrieval solution) for 20 min. The tissue section was blocked with 10% goat serum. The tissue section was then stained with ARG59022 anti-CCN3 antibody at 1 µg/ml dilution, overnight at 4°C.



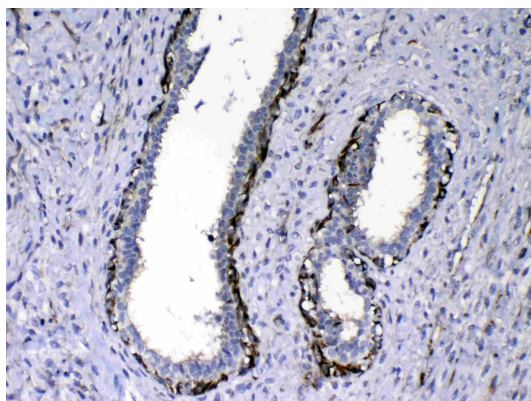
#### ARG59022 anti-CCN3 antibody WB image

Western blot: 50 µg of samples under reducing condition. HeLa cell lysate stained with ARG59022 anti-CCN3 antibody at 0.5 µg/ml, overnight at 4°C.



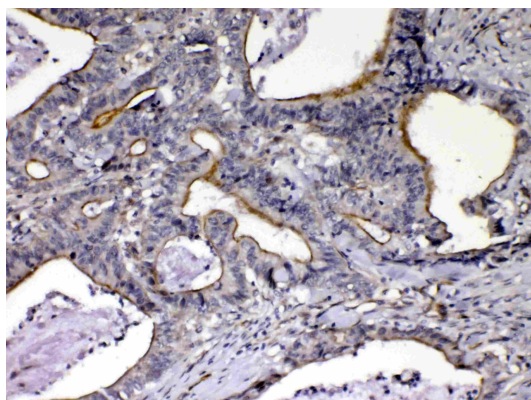
#### ARG59022 anti-CCN3 antibody FACS image

Flow Cytometry: U87 cells were blocked with 10% normal goat serum and then stained with ARG59022 anti-CCN3 antibody (blue) at 1 µg/10<sup>6</sup> cells for 30 min at 20°C, followed by incubation with DyLight®488 labelled secondary antibody. Isotype control antibody (green) was rabbit IgG (1 µg/10<sup>6</sup> cells) used under the same conditions. Unlabelled sample (red) was also used as a control.



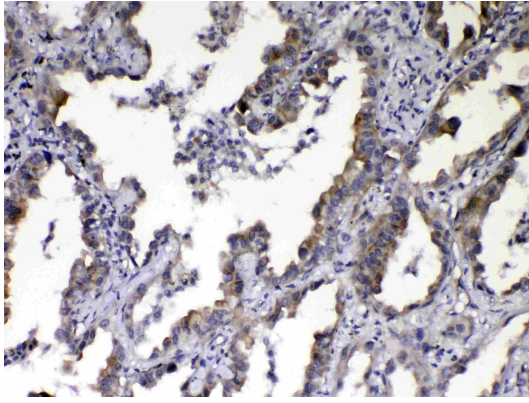
#### ARG59022 anti-CCN3 antibody IHC-P image

Immunohistochemistry: Paraffin-embedded Human mammary cancer tissue. Antigen Retrieval: Heat mediated was performed in Citrate buffer (pH 6.0, epitope retrieval solution) for 20 min. The tissue section was blocked with 10% goat serum. The tissue section was then stained with ARG59022 anti-CCN3 antibody at 1 µg/ml dilution, overnight at 4°C.



#### ARG59022 anti-CCN3 antibody IHC-P image

Immunohistochemistry: Paraffin-embedded Human intestinal cancer tissue. Antigen Retrieval: Heat mediated was performed in Citrate buffer (pH 6.0, epitope retrieval solution) for 20 min. The tissue section was blocked with 10% goat serum. The tissue section was then stained with ARG59022 anti-CCN3 antibody at 1 µg/ml dilution, overnight at 4°C.



ARG59022 anti-CCN3 antibody IHC-P image

Immunohistochemistry: Paraffin-embedded Human lung cancer tissue. Antigen Retrieval: Heat mediated was performed in Citrate buffer (pH 6.0, epitope retrieval solution) for 20 min. The tissue section was blocked with 10% goat serum. The tissue section was then stained with ARG59022 anti-CCN3 antibody at 1 µg/ml dilution, overnight at 4°C.