

ARG58926 anti-HBA2 / Hemoglobin Subunit Alpha 2 antibody

Package: 100 µl
Store at: -20°C

Summary

Product Description	Rabbit Polyclonal antibody recognizes HBA2 / Hemoglobin Subunit Alpha 2
Tested Reactivity	Hu, Ms
Predict Reactivity	Mk
Tested Application	FACS, IHC-P, WB
Host	Rabbit
Clonality	Polyclonal
Isotype	IgG
Target Name	HBA2 / Hemoglobin Subunit Alpha 2
Species	Human
Immunogen	KLH-conjugated synthetic peptide corresponding to aa. 100-128 of Human HBA2.
Conjugation	Un-conjugated
Alternate Names	HBA2; Hemoglobin Subunit Alpha 2; HBA-T2; Hemoglobin Subunit Alpha; Hemoglobin Alpha Chain; Hemoglobin, Alpha 2; Mutant Hemoglobin Alpha 2 Globin Chain; Alpha-2 Globin; Alpha Globin; Alpha-Globin; ECYT7; HBH

Application Instructions

Application table	Application	Dilution
	FACS	1:25
	IHC-P	1:50 - 1:100
	WB	1:1000
Application Note	* The dilutions indicate recommended starting dilutions and the optimal dilutions or concentrations should be determined by the scientist.	
Positive Control	Human fetal heart	

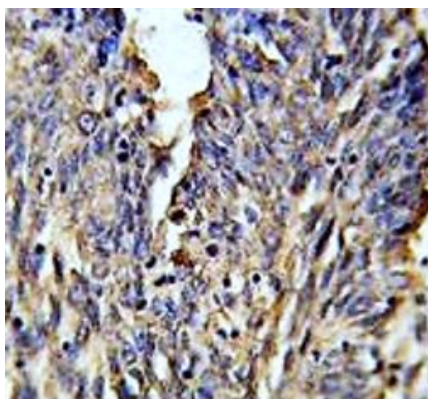
Properties

Form	Liquid
Purification	Purification with Protein A and immunogen peptide.
Buffer	PBS and 0.09% (W/V) Sodium azide.
Preservative	0.09% (W/V) Sodium azide.
Storage instruction	For continuous use, store undiluted antibody at 2-8°C for up to a week. For long-term storage, aliquot and store at -20°C or below. Storage in frost free freezers is not recommended. Avoid repeated freeze/thaw cycles. Suggest spin the vial prior to opening. The antibody solution should be gently mixed before use.

Bioinformation

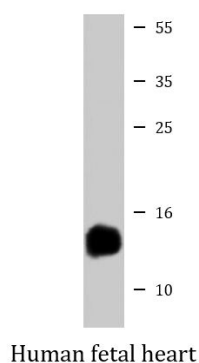
Gene Symbol	HBA2
Gene Full Name	Hemoglobin Subunit Alpha 2
Background	The human alpha globin gene cluster located on chromosome 16 spans about 30 kb and includes seven loci: 5'- zeta - pseudozeta - mu - pseudoalpha-1 - alpha-2 - alpha-1 - theta - 3'. The alpha-2 (HBA2) and alpha-1 (HBA1) coding sequences are identical. These genes differ slightly over the 5' untranslated regions and the introns, but they differ significantly over the 3' untranslated regions. Two alpha chains plus two beta chains constitute HbA, which in normal adult life comprises about 97% of the total hemoglobin; alpha chains combine with delta chains to constitute HbA-2, which with HbF (fetal hemoglobin) makes up the remaining 3% of adult hemoglobin. Alpha thalassemias result from deletions of each of the alpha genes as well as deletions of both HBA2 and HBA1; some nondeletion alpha thalassemias have also been reported. [provided by RefSeq, Jul 2008]
Function	Involved in oxygen transport from the lung to the various peripheral tissues. [UniProt]
Calculated Mw	15 kDa
PTM	The initiator Met is not cleaved in variant Thionville and is acetylated. [UniProt]

Images



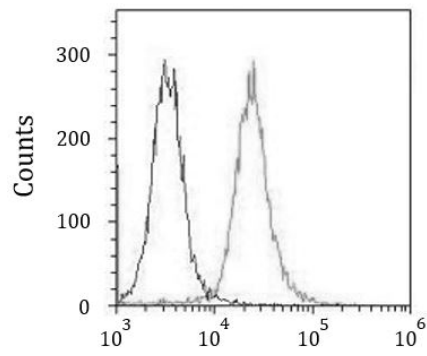
ARG58926 anti-HBA2 / Hemoglobin Subunit Alpha 2 antibody IHC-P image

Immunohistochemistry: Formalin-fixed and paraffin-embedded Human lung carcinoma stained with ARG58926 anti-HBA2 / Hemoglobin Subunit Alpha 2 antibody.



ARG58926 anti-HBA2 / Hemoglobin Subunit Alpha 2 antibody WB image

Western blot: 20 µg of Human fetal heart lysate stained with ARG58926 anti-HBA2 / Hemoglobin Subunit Alpha 2 antibody at 1:2000 dilution.



ARG58926 anti-HBA2 / Hemoglobin Subunit Alpha 2 antibody FACS image

Flow Cytometry: K562 cells were fixed with 2% paraformaldehyde (10 min) and then permeabilized with 90% methanol for 10 min. The cells were then incubated in 2% BSA to block non-specific protein-protein interactions followed by ARG58926 anti-HBA2 / Hemoglobin Subunit Alpha 2 antibody (right histogram) at 1:25, 60 min at 37°C or an isotype control antibody (left histogram), followed by incubation with DyLight® 488 labelled secondary antibody.