

ARG58883 anti-GOLGA4 / Golgin 245 antibody

Package: 100 µl
Store at: -20°C

Summary

| | |
|---------------------|---|
| Product Description | Rabbit Polyclonal antibody recognizes GOLGA4 / Golgin 245 |
| Tested Reactivity | Hu, Ms, Rat |
| Tested Application | ICC/IF, IHC-P, WB |
| Host | Rabbit |
| Clonality | Polyclonal |
| Isotype | IgG |
| Target Name | GOLGA4 / Golgin 245 |
| Species | Human |
| Immunogen | Recombinant fusion protein corresponding to aa. 1-150 of Human GOLGA4 / Golgin 245 (NP_002069.2). |
| Conjugation | Un-conjugated |
| Alternate Names | GCP2; CRPF46; Trans-Golgi p230; Golgin subfamily A member 4; GOLG; MU-RMS-40.18; p230; Golgin-245; 256 kDa golgin; Protein 72.1 |

Application Instructions

| Application table | Application | Dilution |
|-------------------|--|-----------------|
| | ICC/IF | 1:50 - 1:200 |
| | IHC-P | 1:50 - 1:200 |
| | WB | 1:1000 - 1:2000 |
| Application Note | * The dilutions indicate recommended starting dilutions and the optimal dilutions or concentrations should be determined by the scientist. | |
| Positive Control | MCF7 | |
| Observed Size | 280 kDa | |

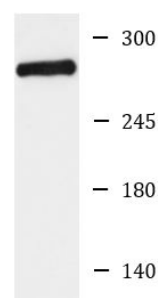
Properties

| | |
|---------------------|---|
| Form | Liquid |
| Purification | Affinity purified. |
| Buffer | PBS (pH 7.3), 0.02% Sodium azide and 50% Glycerol. |
| Preservative | 0.02% Sodium azide |
| Stabilizer | 50% Glycerol |
| Storage instruction | For continuous use, store undiluted antibody at 2-8°C for up to a week. For long-term storage, aliquot and store at -20°C. Storage in frost free freezers is not recommended. Avoid repeated freeze/thaw cycles. Suggest spin the vial prior to opening. The antibody solution should be gently mixed before use. |

Bioinformation

| | |
|-----------------------|--|
| Gene Symbol | GOLGA4 |
| Gene Full Name | golgin A4 |
| Background | The Golgi apparatus, which participates in glycosylation and transport of proteins and lipids in the secretory pathway, consists of a series of stacked cisternae (flattened membrane sacs). Interactions between the Golgi and microtubules are thought to be important for the reorganization of the Golgi after it fragments during mitosis. This gene encodes one of the golgins, a family of proteins localized to the Golgi. This protein has been postulated to play a role in Rab6-regulated membrane-tethering events in the Golgi apparatus. Alternatively spliced transcript variants encoding different isoforms have been identified in this gene. [provided by RefSeq, Feb 2010] |
| Function | May play a role in delivery of transport vesicles containing GPI-linked proteins from the trans-Golgi network through its interaction with MACF1. [UniProt] |
| Calculated Mw | 261 kDa |
| Cellular Localization | Cytoplasm, Golgi apparatus membrane, Peripheral membrane protein, Golgi apparatus. [UniProt] |

Images



MCF7

ARG58883 anti-GOLGA4 / Golgin 245 antibody WB image

Western blot: 25 µg of MCF7 cell lysate stained with ARG58883 anti-GOLGA4 / Golgin 245 antibody at 1:1000 dilution.