

ARG58857 anti-Glutaredoxin 1 antibody

Package: 100 µl
Store at: -20°C

Summary

| | |
|---------------------|---|
| Product Description | Rabbit Polyclonal antibody recognizes Glutaredoxin 1 |
| Tested Reactivity | Hu, Ms, Rat |
| Tested Application | ICC/IF, IHC-P, WB |
| Host | Rabbit |
| Clonality | Polyclonal |
| Isotype | IgG |
| Target Name | Glutaredoxin 1 |
| Species | Human |
| Immunogen | Recombinant fusion protein corresponding to aa. 1-106 of Human Glutaredoxin 1 (NP_001112362.1). |
| Conjugation | Un-conjugated |
| Alternate Names | TTase-1; GRX1; Glutaredoxin-1; Thioltransferase-1; GRX |

Application Instructions

| | | |
|-------------------|--|----------------|
| Application table | Application | Dilution |
| | ICC/IF | 1:50 - 1:200 |
| | IHC-P | 1:50 - 1:200 |
| | WB | 1:500 - 1:2000 |
| Application Note | * The dilutions indicate recommended starting dilutions and the optimal dilutions or concentrations should be determined by the scientist. | |
| Positive Control | NCI-H460 | |
| Observed Size | 12 kDa | |

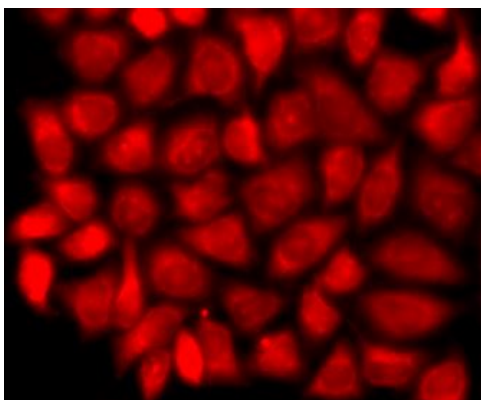
Properties

| | |
|---------------------|---|
| Form | Liquid |
| Purification | Affinity purified. |
| Buffer | PBS (pH 7.3), 0.02% Sodium azide and 50% Glycerol. |
| Preservative | 0.02% Sodium azide |
| Stabilizer | 50% Glycerol |
| Storage instruction | For continuous use, store undiluted antibody at 2-8°C for up to a week. For long-term storage, aliquot and store at -20°C. Storage in frost free freezers is not recommended. Avoid repeated freeze/thaw cycles. Suggest spin the vial prior to opening. The antibody solution should be gently mixed before use. |

Bioinformation

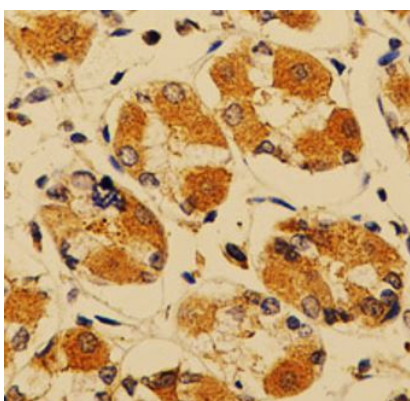
| | |
|-----------------------|---|
| Gene Symbol | GLRX |
| Gene Full Name | glutaredoxin (thioltransferase) |
| Background | This gene encodes a member of the glutaredoxin family. The encoded protein is a cytoplasmic enzyme catalyzing the reversible reduction of glutathione-protein mixed disulfides. This enzyme highly contributes to the antioxidant defense system. It is crucial for several signalling pathways by controlling the S-glutathionylation status of signalling mediators. It is involved in beta-amyloid toxicity and Alzheimer's disease. Multiple alternatively spliced transcript variants encoding the same protein have been identified. [provided by RefSeq, Aug 2011] |
| Function | Has a glutathione-disulfide oxidoreductase activity in the presence of NADPH and glutathione reductase. Reduces low molecular weight disulfides and proteins. [UniProt] |
| Calculated Mw | 12 kDa |
| Cellular Localization | Cytoplasm. [UniProt] |

Images



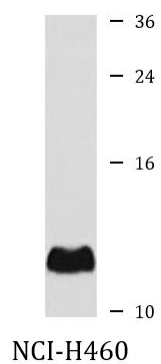
ARG58857 anti-Glutaredoxin 1 antibody ICC/IF image

Immunofluorescence: MCF-7 cells stained with ARG58857 anti-Glutaredoxin 1 antibody.



ARG58857 anti-Glutaredoxin 1 antibody IHC-P image

Immunohistochemistry: Paraffin-embedded Human stomach stained with ARG58857 anti-Glutaredoxin 1 antibody at 1:200 dilution.



ARG58857 anti-Glutaredoxin 1 antibody WB image

Western blot: 25 µg of NCI-H460 cell lysate stained with ARG58857 anti-Glutaredoxin 1 antibody at 1:1000 dilution.