

ARG58849 anti-ALT / Alanine Transaminase antibody

Package: 100 µl
Store at: -20°C

Summary

Product Description	Rabbit Polyclonal antibody recognizes ALT / Alanine Transaminase
Tested Reactivity	Hu, Ms, Rat
Tested Application	WB
Host	Rabbit
Clonality	Polyclonal
Isotype	IgG
Target Name	ALT / Alanine Transaminase
Species	Human
Immunogen	Recombinant fusion protein corresponding to aa. 1-190 of Human ALT / Alanine Transaminase (NP_005300.1).
Conjugation	Un-conjugated
Alternate Names	Glutamate pyruvate transaminase 1; AAT1; GPT1; GPT 1; Glutamic--alanine transaminase 1; Glutamic--pyruvic transaminase 1; Alanine aminotransferase 1; ALT1; EC 2.6.1.2

Application Instructions

Application table	<table> <tr> <th>Application</th><th>Dilution</th></tr> <tr> <td>WB</td><td>1:200 - 1:1000</td></tr> </table>	Application	Dilution	WB	1:200 - 1:1000
Application	Dilution				
WB	1:200 - 1:1000				
Application Note	* The dilutions indicate recommended starting dilutions and the optimal dilutions or concentrations should be determined by the scientist.				
Positive Control	Rat liver				
Observed Size	50 kDa				

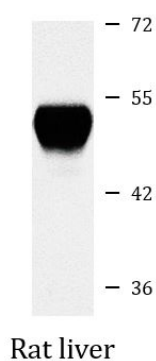
Properties

Form	Liquid
Purification	Affinity purified.
Buffer	PBS (pH 7.3), 0.02% Sodium azide and 50% Glycerol.
Preservative	0.02% Sodium azide
Stabilizer	50% Glycerol
Storage instruction	For continuous use, store undiluted antibody at 2-8°C for up to a week. For long-term storage, aliquot and store at -20°C. Storage in frost free freezers is not recommended. Avoid repeated freeze/thaw cycles. Suggest spin the vial prior to opening. The antibody solution should be gently mixed before use.
Note	For laboratory research only, not for drug, diagnostic or other use.

Bioinformation

Gene Symbol	GPT
Gene Full Name	glutamic-pyruvate transaminase (alanine aminotransferase)
Background	This gene encodes cytosolic alanine aminotransaminase 1 (ALT1); also known as glutamate-pyruvate transaminase 1. This enzyme catalyzes the reversible transamination between alanine and 2-oxoglutarate to generate pyruvate and glutamate and, therefore, plays a key role in the intermediary metabolism of glucose and amino acids. Serum activity levels of this enzyme are routinely used as a biomarker of liver injury caused by drug toxicity, infection, alcohol, and steatosis. A related gene on chromosome 16 encodes a putative mitochondrial alanine aminotransaminase.[provided by RefSeq, Nov 2009]
Function	Catalyzes the reversible transamination between alanine and 2-oxoglutarate to form pyruvate and glutamate. Participates in cellular nitrogen metabolism and also in liver gluconeogenesis starting with precursors transported from skeletal muscles (By similarity). [UniProt]
Calculated Mw	55 kDa
Cellular Localization	Cytoplasm. [UniProt]

Images



ARG58849 anti-ALT / Alanine Transaminase antibody WB image

Western blot: 25 µg of Rat liver lysate stained with ARG58849 anti-ALT / Alanine Transaminase antibody at 1:1000 dilution.