

ARG58828 anti-LIFR antibody

Package: 50 µg
Store at: -20°C

Summary

Product Description	Rabbit Polyclonal antibody recognizes LIFR
Tested Reactivity	Hu
Predict Reactivity	Bov
Tested Application	WB
Host	Rabbit
Clonality	Polyclonal
Isotype	IgG
Target Name	LIFR
Species	Human
Immunogen	Synthetic peptide corresponding to aa. 863-899 of Human LIFR (EWIKETFPDIPNPENCKALQFQKSVCEGSSALKTLE).
Conjugation	Un-conjugated
Alternate Names	CD118; CD antigen CD118; STWS; SJS2; LIF receptor; Leukemia inhibitory factor receptor; SWS; LIF-R

Application Instructions

Application table	Application	Dilution
	WB	0.1 - 0.5 µg/ml
Application Note	* The dilutions indicate recommended starting dilutions and the optimal dilutions or concentrations should be determined by the scientist.	

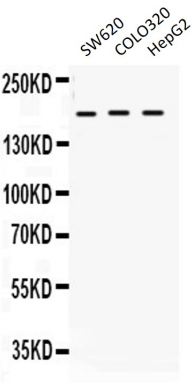
Properties

Form	Liquid
Purification	Affinity purification with immunogen.
Buffer	0.9% NaCl, 0.2% Na ₂ HPO ₄ , 0.05% Sodium azide and 5% BSA.
Preservative	0.05% Sodium azide
Stabilizer	5% BSA
Concentration	0.5 mg/ml
Storage instruction	For continuous use, store undiluted antibody at 2-8°C for up to a week. For long-term storage, aliquot and store at -20°C or below. Storage in frost free freezers is not recommended. Avoid repeated freeze/thaw cycles. Suggest spin the vial prior to opening. The antibody solution should be gently mixed before use.
Note	For laboratory research only, not for drug, diagnostic or other use.

Bioinformation

Gene Symbol	LIFR
Gene Full Name	leukemia inhibitory factor receptor alpha
Background	This gene encodes a protein that belongs to the type I cytokine receptor family. This protein combines with a high-affinity converter subunit, gp130, to form a receptor complex that mediates the action of the leukemia inhibitory factor, a polyfunctional cytokine that is involved in cellular differentiation, proliferation and survival in the adult and the embryo. Mutations in this gene cause Schwartz-Jampel syndrome type 2, a disease belonging to the group of the bent-bone dysplasias. A translocation that involves the promoter of this gene, t(5;8)(p13;q12) with the pleiomorphic adenoma gene 1, is associated with salivary gland pleiomorphic adenoma, a common type of benign epithelial tumor of the salivary gland. Multiple splice variants encoding the same protein have been found for this gene. [provided by RefSeq, Jul 2008]
Function	Signal-transducing molecule. May have a common pathway with IL6ST. The soluble form inhibits the biological activity of LIF by blocking its binding to receptors on target cells. [UniProt]
Calculated Mw	124 kDa
Cellular Localization	Isoform 1: Cell membrane; Single-pass type I membrane protein. [UniProt]

Images



ARG58828 anti-LIFR antibody WB image

Western blot: 40 µg of SW620, COLO320 and HepG2 cell lysates stained with ARG58828 anti-LIFR antibody at 0.5 µg/ml dilution.