

ARG58754 anti-MSTN / GDF8 antibody

Package: 100 µl
Store at: -20°C

Summary

Product Description	Rabbit Polyclonal antibody recognizes MSTN / GDF8
Tested Reactivity	Hu, Ms
Tested Application	IHC-P, WB
Host	Rabbit
Clonality	Polyclonal
Isotype	IgG
Target Name	MSTN / GDF8
Species	Human
Immunogen	KLH-conjugated synthetic peptide between aa. 9-38 of Human MSTN / GDF8.
Conjugation	Un-conjugated
Alternate Names	GDF-8; Myostatin; GDF8; MSLHP; Growth/differentiation factor 8

Application Instructions

Application table	Application	Dilution
	IHC-P	1:50
	WB	1:2000
Application Note	* The dilutions indicate recommended starting dilutions and the optimal dilutions or concentrations should be determined by the scientist.	
Positive Control	K562	

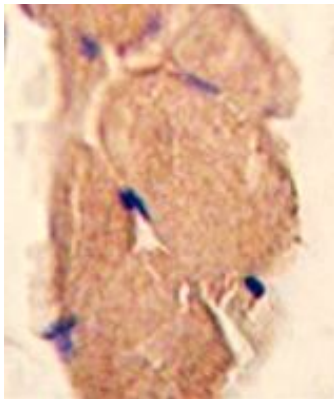
Properties

Form	Liquid
Purification	Purification with Protein A and immunogen peptide.
Buffer	PBS and 0.09% (W/V) Sodium azide.
Preservative	0.09% (W/V) Sodium azide
Storage instruction	For continuous use, store undiluted antibody at 2-8°C for up to a week. For long-term storage, aliquot and store at -20°C or below. Storage in frost free freezers is not recommended. Avoid repeated freeze/thaw cycles. Suggest spin the vial prior to opening. The antibody solution should be gently mixed before use.
Note	For laboratory research only, not for drug, diagnostic or other use.

Bioinformation

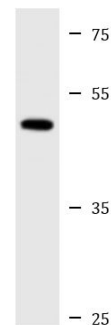
Gene Symbol	MSTN
Gene Full Name	myostatin
Background	The protein encoded by this gene is a member of the bone morphogenetic protein (BMP) family and the TGF-beta superfamily. This group of proteins is characterized by a polybasic proteolytic processing site which is cleaved to produce a mature protein containing seven conserved cysteine residues. The members of this family are regulators of cell growth and differentiation in both embryonic and adult tissues. This gene is thought to encode a secreted protein which negatively regulates skeletal muscle growth. [provided by RefSeq, Jul 2008]
Function	Acts specifically as a negative regulator of skeletal muscle growth. [UniProt]
Calculated Mw	43 kDa

Images



ARG58754 anti-MSTN / GDF8 antibody IHC-P image

Immunohistochemistry: Formalin-fixed and paraffin-embedded Human skeletal muscle tissue stained with ARG58754 anti-MSTN / GDF8 antibody.



K562

ARG58754 anti-MSTN / GDF8 antibody WB image

Western blot: 20 µg of K562 cell lysate stained with ARG58754 anti-MSTN / GDF8 antibody at 1:2000 dilution.