

ARG58745 anti-ZEB2 antibody

Package: 50 µg
Store at: -20°C

Summary

Product Description	Rabbit Polyclonal antibody recognizes ZEB2
Tested Reactivity	Hu, Ms, Rat
Predict Reactivity	Hm
Tested Application	IHC-P, WB
Host	Rabbit
Clonality	Polyclonal
Isotype	IgG
Target Name	ZEB2
Species	Human
Immunogen	Synthetic peptide corresponding to aa. 948-962 of Human ZEB2. (DMQRRKYQRKQGFQ)
Conjugation	Un-conjugated
Alternate Names	Zinc finger E-box-binding homeobox 2; SIP-1; SIP1; SMADIP1; Smad-interacting protein 1; Zinc finger homeobox protein 1b; HSPC082; ZFH1B

Application Instructions

Application table	Application	Dilution
	IHC-P	1:200 - 1:1000
	WB	0.1 - 0.5 µg/ml
Application Note	IHC-P: Antigen Retrieval: Heat mediation was performed in Citrate buffer (pH 6.0) for 20 min. * The dilutions indicate recommended starting dilutions and the optimal dilutions or concentrations should be determined by the scientist.	

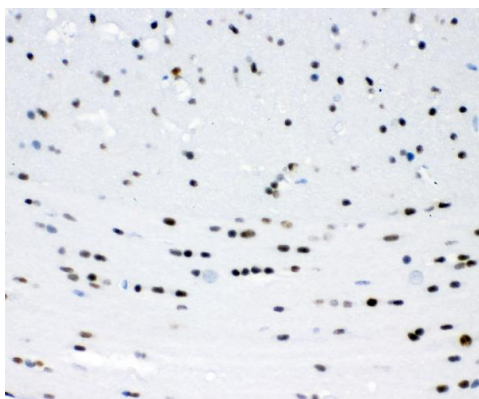
Properties

Form	Liquid
Purification	Affinity purification with immunogen.
Buffer	0.9% NaCl, 0.2% Na ₂ HPO ₄ , 0.05% Thimerosal, 0.05% Sodium azide and 5% BSA.
Preservative	0.05% Thimerosal and 0.05% Sodium azide
Stabilizer	5% BSA
Concentration	0.5 mg/ml
Storage instruction	For continuous use, store undiluted antibody at 2-8°C for up to a week. For long-term storage, aliquot and store at -20°C or below. Storage in frost free freezers is not recommended. Avoid repeated freeze/thaw cycles. Suggest spin the vial prior to opening. The antibody solution should be gently mixed before use.

Bioinformation

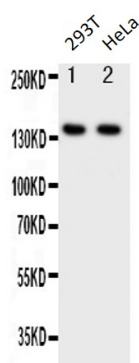
Gene Symbol	ZEB2
Gene Full Name	zinc finger E-box binding homeobox 2
Background	The protein encoded by this gene is a member of the Zfh1 family of 2-handed zinc finger/homeodomain proteins. It is located in the nucleus and functions as a DNA-binding transcriptional repressor that interacts with activated SMADs. Mutations in this gene are associated with Hirschsprung disease/Mowat-Wilson syndrome. Alternatively spliced transcript variants have been found for this gene.[provided by RefSeq, Jan 2010]
Function	Transcriptional inhibitor that binds to DNA sequence 5'-CACCT-3' in different promoters. Represses transcription of E-cadherin. [UniProt]
Calculated Mw	136 kDa
PTM	Sumoylation on Lys-391 and Lys-866 is promoted by the E3 SUMO-protein ligase CBX4, and impairs interaction with CTBP1 and transcription repression activity. [UniProt]
Cellular Localization	Nucleus. [UniProt]

Images



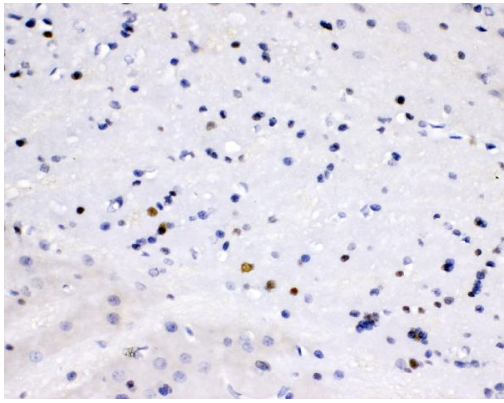
ARG58745 anti-ZEB2 antibody IHC-P image

Immunohistochemistry: Paraffin-embedded Mouse brain tissue. Antigen Retrieval: Heat mediation was performed in Citrate buffer (pH 6.0) for 20 min. The tissue section was blocked with 10% goat serum. The tissue section was then stained with ARG58745 anti-ZEB2 antibody at 1 µg/ml dilution, overnight at 4°C.



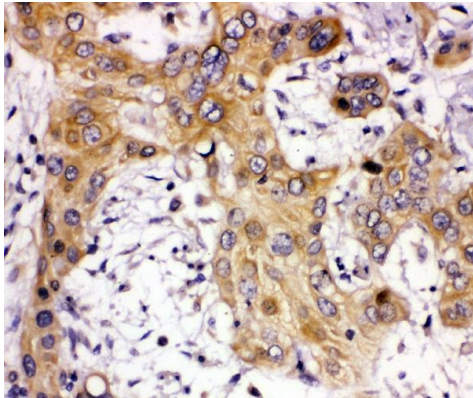
ARG58745 anti-ZEB2 antibody WB image

Western blot: 1) 293T and 2) HeLa cell lysates stained with ARG58745 anti-ZEB2 antibody.



ARG58745 anti-ZEB2 antibody IHC-P image

Immunohistochemistry: Paraffin-embedded Rat brain tissue. Antigen Retrieval: Heat mediation was performed in Citrate buffer (pH 6.0) for 20 min. The tissue section was blocked with 10% goat serum. The tissue section was then stained with ARG58745 anti-ZEB2 antibody at 1 µg/ml dilution, overnight at 4°C.



ARG58745 anti-ZEB2 antibody IHC-P image

Immunohistochemistry: Paraffin-embedded Human glioma tissue. Antigen Retrieval: Heat mediation was performed in Citrate buffer (pH 6.0) for 20 min. The tissue section was blocked with 10% goat serum. The tissue section was then stained with ARG58745 anti-ZEB2 antibody at 1 µg/ml dilution, overnight at 4°C.