

ARG58717 anti-Filamin B antibody

Package: 100 µl
Store at: -20°C

Summary

Product Description	Rabbit Polyclonal antibody recognizes Filamin B
Tested Reactivity	Hu, Ms, Rat
Tested Application	ICC/IF, IHC-P, WB
Host	Rabbit
Clonality	Polyclonal
Isotype	IgG
Target Name	Filamin B
Species	Human
Immunogen	Recombinant fusion protein corresponding to aa. 1686-1785 of Human Filamin B (NP_001157789.1).
Conjugation	Un-conjugated
Alternate Names	Actin-binding-like protein; ABP-280; TAP; ABP-280 homolog; LRS1; Truncated ABP; ABP-278; Fh1; Filamin-B; TAPP; AOI; Thyroid autoantigen; FLN-B; FLN1L; Beta-filamin; SCT; Filamin-3; FH1; Filamin homolog 1; Truncated actin-binding protein

Application Instructions

Application table	Application	Dilution
	ICC/IF	1:50 - 1:200
	IHC-P	1:50 - 1:200
	WB	1:500 - 1:1000
Application Note	* The dilutions indicate recommended starting dilutions and the optimal dilutions or concentrations should be determined by the scientist.	
Positive Control	A431	
Observed Size	298 kDa	

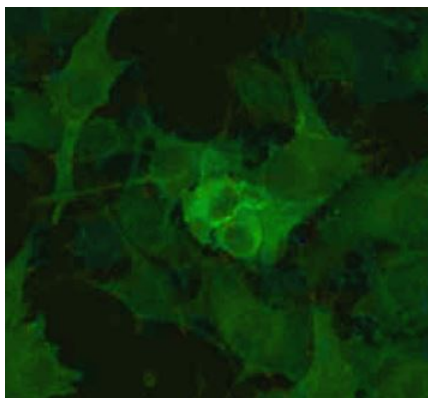
Properties

Form	Liquid
Purification	Affinity purified.
Buffer	PBS (pH 7.3), 0.02% Sodium azide and 50% Glycerol.
Preservative	0.02% Sodium azide
Stabilizer	50% Glycerol
Storage instruction	For continuous use, store undiluted antibody at 2-8°C for up to a week. For long-term storage, aliquot and store at -20°C. Storage in frost free freezers is not recommended. Avoid repeated freeze/thaw cycles. Suggest spin the vial prior to opening. The antibody solution should be gently mixed before use.

Bioinformation

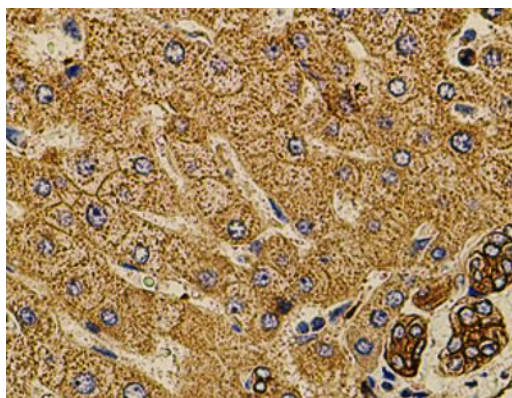
Gene Symbol	FLNB
Gene Full Name	filamin B, beta
Background	This gene encodes a member of the filamin family. The encoded protein interacts with glycoprotein Ib alpha as part of the process to repair vascular injuries. The platelet glycoprotein Ib complex includes glycoprotein Ib alpha, and it binds the actin cytoskeleton. Mutations in this gene have been found in several conditions: atelosteogenesis type 1 and type 3; boomerang dysplasia; autosomal dominant Larsen syndrome; and spondylocarpotarsal synostosis syndrome. Multiple alternatively spliced transcript variants that encode different protein isoforms have been described for this gene. [provided by RefSeq, Nov 2009]
Function	Connects cell membrane constituents to the actin cytoskeleton. May promote orthogonal branching of actin filaments and links actin filaments to membrane glycoproteins. Anchors various transmembrane proteins to the actin cytoskeleton. Interaction with FLNA may allow neuroblast migration from the ventricular zone into the cortical plate. Various interactions and localizations of isoforms affect myotube morphology and myogenesis. Isoform 6 accelerates muscle differentiation in vitro. [UniProt]
Calculated Mw	278 kDa
PTM	ISGylation prevents ability to interact with the upstream activators of the JNK cascade and inhibits IFN α -induced JNK signaling. Ubiquitination by a SCF-like complex containing ASB2 isoform 2 leads to proteasomal degradation which promotes muscle differentiation. [UniProt]
Cellular Localization	Cytoplasm, cell cortex, Cytoplasm, cytoskeleton, myofibril, sarcomere, Z line. [UniProt]

Images



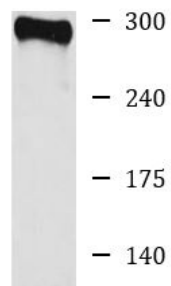
ARG58717 anti-Filamin B antibody ICC/IF image

Immunofluorescence: HUVEC cells stained with ARG58717 anti-Filamin B antibody at 1:100 dilution.



ARG58717 anti-Filamin B antibody IHC-P image

Immunohistochemistry: Paraffin-embedded Human liver injury stained with ARG58717 anti-Filamin B antibody at 1:100 dilution.



A431

ARG58717 anti-Filamin B antibody WB image

Western blot: 25 µg of A431 cell lysate stained with ARG58717 anti-Filamin B antibody at 1:1000 dilution.