

ARG58622 anti-SERPINB1 antibody

Package: 50 µg
Store at: -20°C

Summary

Product Description	Goat Polyclonal antibody recognizes SERPINB1
Tested Reactivity	Hu
Tested Application	IHC-P, WB
Host	Goat
Clonality	Polyclonal
Isotype	IgG
Target Name	SERPINB1
Species	Human
Immunogen	Synthetic peptide from the internal region of Human SERPINB1 (NP_109591.1). (C-KTINQWVKGQTEGK)
Conjugation	Un-conjugated
Alternate Names	EI; LEI; ELANH2; Monocyte/neutrophil elastase inhibitor; Leukocyte elastase inhibitor; M/NEI; Serpin B1; MNEI; PI-2; PI2; Peptidase inhibitor 2; HEL57

Application Instructions

Application table	Application	Dilution
	IHC-P	5 µg/ml
	WB	0.5 - 2 µg/ml
Application Note	WB: Recommend incubate at RT for 1h. IHC-P: Antigen Retrieval: Steam tissue section in Citrate buffer (pH 6.0). * The dilutions indicate recommended starting dilutions and the optimal dilutions or concentrations should be determined by the scientist.	
Observed Size	~ 42 - 45 kDa	

Properties

Form	Liquid
Purification	Affinity purified
Buffer	Tris saline (pH 7.3), 0.02% Sodium azide and 0.5% BSA.
Preservative	0.02% Sodium azide
Stabilizer	0.5% BSA
Concentration	0.5 mg/ml
Storage instruction	For continuous use, store undiluted antibody at 2-8°C for up to a week. For long-term storage, aliquot and store at -20°C or below. Storage in frost free freezers is not recommended. Avoid repeated freeze/thaw cycles. Suggest spin the vial prior to opening. The antibody solution should be gently mixed

before use.

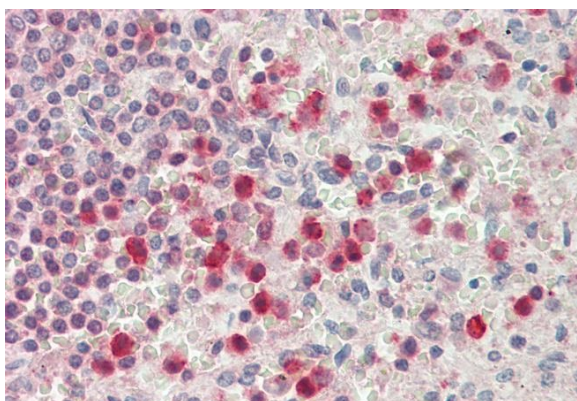
Note

For laboratory research only, not for drug, diagnostic or other use.

Bioinformation

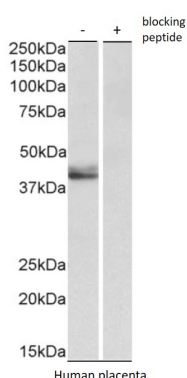
Gene Symbol	SERPINB1
Gene Full Name	serpin peptidase inhibitor, clade B (ovalbumin), member 1
Background	The protein encoded by this gene is a member of the serpin family of proteinase inhibitors. Members of this family maintain homeostasis by neutralizing overexpressed proteinase activity through their function as suicide substrates. This protein inhibits the neutrophil-derived proteinases neutrophil elastase, cathepsin G, and proteinase-3 and thus protects tissues from damage at inflammatory sites. Alternative splicing results in multiple transcript variants. [provided by RefSeq, Aug 2012]
Function	Regulates the activity of the neutrophil proteases elastase, cathepsin G, proteinase-3, chymase, chymotrypsin, and kallikrein-3. Also functions as a potent intracellular inhibitor of granzyme H. [UniProt]
Calculated Mw	43 kDa

Images



ARG58622 anti-SERPINB1 antibody IHC-P image

Immunohistochemistry: Paraffin-embedded Human spleen tissue. Antigen Retrieval: Steam tissue section in Citrate buffer (pH 6.0). The tissue section was stained with ARG58622 anti-SERPINB1 antibody at 5 µg/ml dilution followed by AP-staining.



ARG58622 anti-SERPINB1 antibody WB image

Western blot: 35 µg of Human placenta lysate (in RIPA buffer) without blocking peptide (-) or with blocking peptide (+). The blots were stained with ARG58622 anti-SERPINB1 antibody at 0.5 µg/ml dilution. Primary incubation was 1 hour. Detected by chemiluminescence.