

ARG58589 anti-Endothelin B Receptor antibody

Package: 50 µg
Store at: -20°C

Summary

Product Description	Rabbit Polyclonal antibody recognizes Endothelin B Receptor
Tested Reactivity	Hu, Ms, Rat
Tested Application	FACS, ICC/IF, IHC-P, WB
Host	Rabbit
Clonality	Polyclonal
Isotype	IgG
Target Name	Endothelin B Receptor
Species	Human
Immunogen	Synthetic peptide corresponding to aa. 406-439 of Human Endothelin B Receptor. (QSFEKQSLKQSLKFKANDHGYDNFRSSNKY)
Conjugation	Un-conjugated
Alternate Names	HSCR; WS4A; HSCR2; ETB1; Endothelin receptor non-selective type; ETRB; ETB; ET-B; ET-BR; Endothelin B receptor; ABCDS; ETBR

Application Instructions

Application table	Application	Dilution
	FACS	1:150 - 1:500
	ICC/IF	1:200 - 1:1000
	IHC-P	0.5 - 1 µg/ml
	WB	0.1 - 0.5 µg/ml
Application Note	IHC-P: Antigen Retrieval: By heat mediation. * The dilutions indicate recommended starting dilutions and the optimal dilutions or concentrations should be determined by the scientist.	

Properties

Form	Liquid
Purification	Affinity purification with immunogen.
Buffer	0.9% NaCl, 0.2% Na ₂ HPO ₄ , 0.05% Sodium azide and 5% BSA.
Preservative	0.05% Sodium azide
Stabilizer	5% BSA
Concentration	0.5 mg/ml
Storage instruction	For continuous use, store undiluted antibody at 2-8°C for up to a week. For long-term storage, aliquot and store at -20°C or below. Storage in frost free freezers is not recommended. Avoid repeated

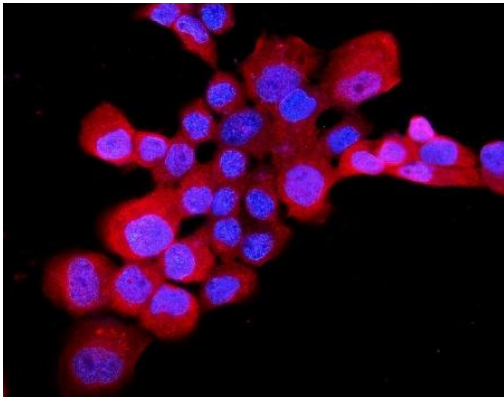
freeze/thaw cycles. Suggest spin the vial prior to opening. The antibody solution should be gently mixed before use.

Note For laboratory research only, not for drug, diagnostic or other use.

Bioinformation

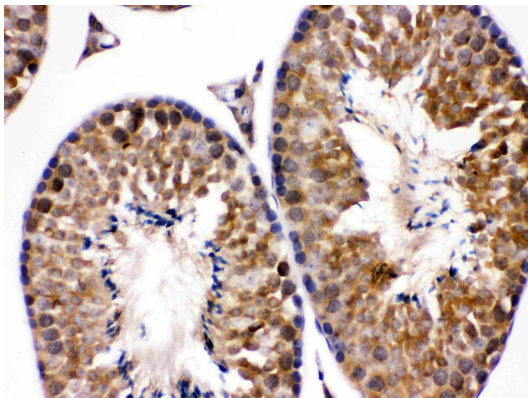
Gene Symbol	EDNRB
Gene Full Name	endothelin receptor type B
Background	The protein encoded by this gene is a G protein-coupled receptor which activates a phosphatidylinositol-calcium second messenger system. Its ligand, endothelin, consists of a family of three potent vasoactive peptides: ET1, ET2, and ET3. Studies suggest that the multigenic disorder, Hirschsprung disease type 2, is due to mutations in the endothelin receptor type B gene. Alternatively spliced transcript variants encoding different isoforms have been found for this gene. [provided by RefSeq, Jan 2011]
Function	Non-specific receptor for endothelin 1, 2, and 3. Mediates its action by association with G proteins that activate a phosphatidylinositol-calcium second messenger system. [UniProt]
Calculated Mw	50 kDa
PTM	Palmitoylation of Cys-402 was confirmed by the palmitoylation of Cys-402 in a deletion mutant lacking both Cys-403 and Cys-405. [UniProt]
Cellular Localization	Cell membrane; Multi-pass membrane protein. [UniProt]

Images



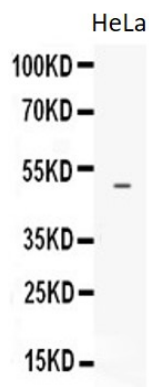
ARG58589 anti-Endothelin B Receptor antibody ICC/IF image

Immunofluorescence: A431 cells were blocked with 10% goat serum and then stained with ARG58589 anti-Endothelin B Receptor antibody (red) at 2 µg/ml dilution, overnight at 4°C. DAPI (blue) for nuclear staining.



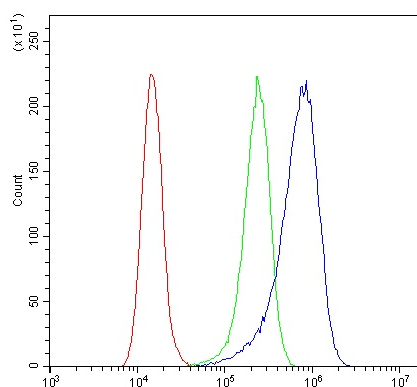
ARG58589 anti-Endothelin B Receptor antibody IHC-P image

Immunohistochemistry: Paraffin-embedded Mouse Testis Tissue stained with ARG58589 anti-Endothelin B Receptor antibody.



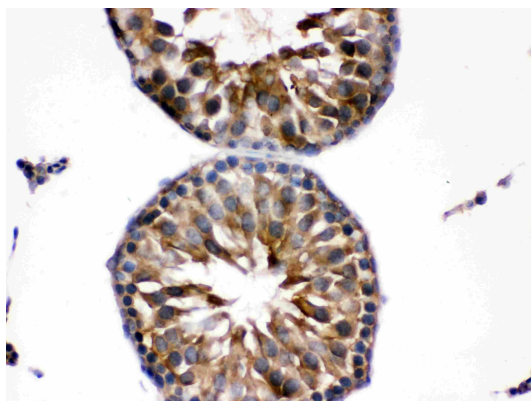
ARG58589 anti-Endothelin B Receptor antibody WB image

Western blot: 40 µg of HeLa whole cell lysate stained with ARG58589 anti-Endothelin B Receptor antibody at 0.5 µg/ml dilution.



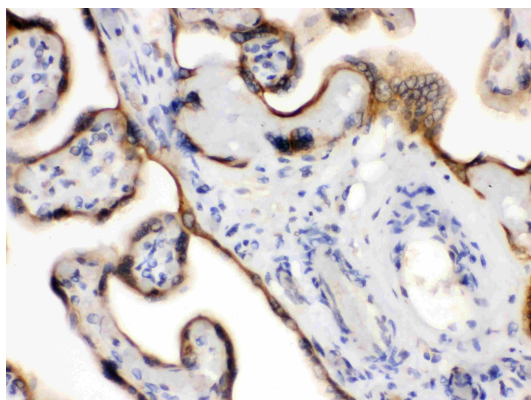
ARG58589 anti-Endothelin B Receptor antibody FACS image

Flow Cytometry: A431 cells were blocked with 10% normal goat serum and then stained with ARG58589 anti-Endothelin B Receptor antibody (blue) at 1 µg/ 10^6 cells for 30 min at 20°C, followed by incubation with DyLight®488 labelled secondary antibody. Isotype control antibody (green) was rabbit IgG (1 µg/ 10^6 cells) used under the same conditions. Unlabelled sample (red) was also used as a control.



ARG58589 anti-Endothelin B Receptor antibody IHC-P image

Immunohistochemistry: Paraffin-embedded Rat Testis Tissue stained with ARG58589 anti-Endothelin B Receptor antibody.



ARG58589 anti-Endothelin B Receptor antibody IHC-P image

Immunohistochemistry: Paraffin-embedded Human Placenta Tissue stained with ARG58589 anti-Endothelin B Receptor antibody.