

ARG58485 anti-Factor D antibody

Package: 100 µl
Store at: -20°C

Summary

Product Description	Rabbit Polyclonal antibody recognizes Factor D
Tested Reactivity	Hu, Ms
Tested Application	WB
Host	Rabbit
Clonality	Polyclonal
Isotype	IgG
Target Name	Factor D
Species	Human
Immunogen	Recombinant fusion protein corresponding to aa. 26-253 of Human Factor D (NP_001919.2).
Conjugation	Un-conjugated
Alternate Names	C3 convertase activator; PFD; Properdin factor D; DF; Complement factor D; ADIPSIN; EC 3.4.21.46; ADN; Adipsin

Application Instructions

Application table	Application	Dilution
	WB	1:500 - 1:2000
Application Note	* The dilutions indicate recommended starting dilutions and the optimal dilutions or concentrations should be determined by the scientist.	
Positive Control	Mouse lung	
Observed Size	27 kDa	

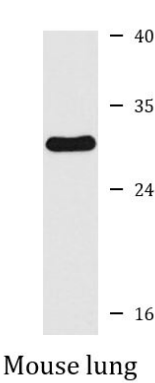
Properties

Form	Liquid
Purification	Affinity purified.
Buffer	PBS (pH 7.3), 0.02% Sodium azide and 50% Glycerol.
Preservative	0.02% Sodium azide
Stabilizer	50% Glycerol
Storage instruction	For continuous use, store undiluted antibody at 2-8°C for up to a week. For long-term storage, aliquot and store at -20°C. Storage in frost free freezers is not recommended. Avoid repeated freeze/thaw cycles. Suggest spin the vial prior to opening. The antibody solution should be gently mixed before use.
Note	For laboratory research only, not for drug, diagnostic or other use.

Bioinformation

Gene Symbol	CFD
Gene Full Name	complement factor D (adipsin)
Background	The protein encoded by this gene is a member of the trypsin family of peptidases. The encoded protein is a component of the alternative complement pathway best known for its role in humoral suppression of infectious agents. This protein is also a serine protease that is secreted by adipocytes into the bloodstream. Finally, the encoded protein has a high level of expression in fat, suggesting a role for adipose tissue in immune system biology. [provided by RefSeq, Jul 2008]
Function	Factor D cleaves factor B when the latter is complexed with factor C3b, activating the C3bbb complex, which then becomes the C3 convertase of the alternate pathway. Its function is homologous to that of C1s in the classical pathway. [UniProt]
Calculated Mw	27 kDa
Cellular Localization	Secreted. [UniProt]

Images



ARG58485 anti-Factor D antibody WB image

Western blot: 25 µg of Mouse lung lysate stained with ARG58485 anti-Factor D antibody at 1:1000 dilution.