

## ARG58430 anti-CHRNA1 / Nicotinic Acetylcholine R alpha 1 antibody

Package: 50 µg  
Store at: -20°C

### Summary

Product Description	Rabbit Polyclonal antibody recognizes CHRNA1 / Nicotinic Acetylcholine R alpha 1
Tested Reactivity	Rat
Predict Reactivity	Hm
Tested Application	WB
Host	Rabbit
Clonality	Polyclonal
Isotype	IgG
Target Name	CHRNA1 / Nicotinic Acetylcholine R alpha 1
Species	Human
Immunogen	Synthetic peptide corresponding to aa. 22-36 of Human Nicotinic Acetylcholine Receptor alpha 1 (EHETRLVAKLFKDYS). Identical to the related Rat sequence, different from the related Mouse sequence by one amino acid.
Conjugation	Un-conjugated
Alternate Names	CMS1A; FCCMS; CMS1B; SCCMS; CMS2A; Acetylcholine receptor subunit alpha; CHRNA; ACHRA; ACHRD

### Application Instructions

Application table	Application	Dilution
	WB	0.1 - 0.5 µg/ml
Application Note	* The dilutions indicate recommended starting dilutions and the optimal dilutions or concentrations should be determined by the scientist.	

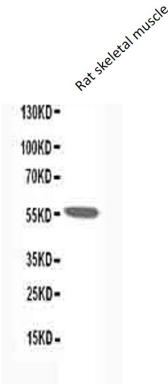
### Properties

Form	Liquid
Purification	Affinity purification with immunogen.
Buffer	0.9% NaCl, 0.2% Na <sub>2</sub> HPO <sub>4</sub> , 0.05% Thimerosal, 0.05% Sodium azide and 5% BSA.
Preservative	0.05% Thimerosal and 0.05% Sodium azide
Stabilizer	5% BSA
Concentration	0.5 mg/ml
Storage instruction	For continuous use, store undiluted antibody at 2-8°C for up to a week. For long-term storage, aliquot and store at -20°C or below. Storage in frost free freezers is not recommended. Avoid repeated freeze/thaw cycles. Suggest spin the vial prior to opening. The antibody solution should be gently mixed before use.
Note	For laboratory research only, not for drug, diagnostic or other use.

Bioinformation

Gene Symbol	CHRNA1
Gene Full Name	cholinergic receptor, nicotinic, alpha 1 (muscle)
Background	The muscle acetylcholine receptor consists of 5 subunits of 4 different types: 2 alpha subunits and 1 each of the beta, gamma, and delta subunits. This gene encodes an alpha subunit that plays a role in acetylcholine binding/channel gating. Alternatively spliced transcript variants encoding different isoforms have been identified. [provided by RefSeq, Nov 2012]
Function	After binding acetylcholine, the AChR responds by an extensive change in conformation that affects all subunits and leads to opening of an ion-conducting channel across the plasma membrane. [UniProt]
Calculated Mw	55 kDa
Cellular Localization	Cell junction, synapse, postsynaptic cell membrane; Multi-pass membrane protein. Cell membrane; Multi-pass membrane protein. [UniProt]

Images



ARG58430 anti-CHRNA1 / Nicotinic Acetylcholine R alpha 1 antibody  
WB image

Western blot: Rat skeletal muscle lysate stained with ARG58430 anti-CHRNA1 / Nicotinic Acetylcholine R alpha 1 antibody.