

## ARG58407 anti-CLN5 antibody

Package: 100 µl  
Store at: -20°C

### Summary

|                     |   |
|---------------------|---|
| Product Description | Rabbit Polyclonal antibody recognizes CLN5  |
| Tested Reactivity   | Hu, Ms, Rat   |
| Tested Application  | IHC-P, WB   |
| Host                | Rabbit  |
| Clonality           | Polyclonal  |
| Isotype             | IgG   |
| Target Name         | CLN5  |
| Species             | Human   |
| Immunogen           | Recombinant fusion protein corresponding to aa. 96-407 of Human CLN5 (NP_006484.1). |
| Conjugation         | Un-conjugated   |
| Alternate Names     | NCL; Protein CLN5; Ceroid-lipofuscinosis neuronal protein 5                         |

### Application Instructions

|                   |  |                |
|-------------------|--|----------------|
| Application table | Application  | Dilution       |
|                   | IHC-P  | 1:50 - 1:100   |
|                   | WB   | 1:500 - 1:1000 |
| Application Note  | * The dilutions indicate recommended starting dilutions and the optimal dilutions or concentrations should be determined by the scientist. |                |
| Positive Control  | Mouse heart  |                |
| Observed Size     | 50 kDa   |                |

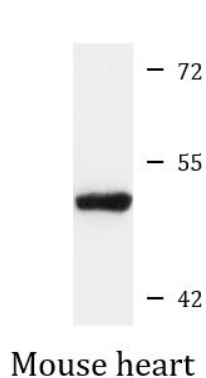
### Properties

|                     |   |
|---------------------|---|
| Form                | Liquid  |
| Purification        | Affinity purified.  |
| Buffer              | PBS (pH 7.3), 0.02% Sodium azide and 50% Glycerol.  |
| Preservative        | 0.02% Sodium azide  |
| Stabilizer          | 50% Glycerol  |
| Storage instruction | For continuous use, store undiluted antibody at 2-8°C for up to a week. For long-term storage, aliquot and store at -20°C. Storage in frost free freezers is not recommended. Avoid repeated freeze/thaw cycles. Suggest spin the vial prior to opening. The antibody solution should be gently mixed before use. |
| Note                | For laboratory research only, not for drug, diagnostic or other use.  |

## Bioinformation

|                       |  |
|-----------------------|--|
| Gene Symbol           | CLN5   |
| Gene Full Name        | ceroid-lipofuscinosis, neuronal 5  |
| Background            | <p>This gene is one of eight which have been associated with neuronal ceroid lipofuscinoses (NCL). Also referred to as Batten disease, NCL comprises a class of autosomal recessive, neurodegenerative disorders affecting children. The genes responsible likely encode proteins involved in the degradation of post-translationally modified proteins in lysosomes. The primary defect in NCL disorders is thought to be associated with lysosomal storage function.[provided by RefSeq, Oct 2008]</p>   |
| Calculated Mw         | 41 kDa   |
| PTM                   | <p>N-glycosylated with both high mannose and complex type sugars. Glycosylation is important for proper folding and trafficking to the lysosomes.</p> <p>Ceroid-lipofuscinosis neuronal protein 5: The type II membrane signal anchor is proteolytically cleaved to produce a mature form that is transported to the lysosomes (Ceroid-lipofuscinosis neuronal protein 5, secreted form) (PubMed:24038957, PubMed:20052765).</p> <p>Can undergo proteolytic cleavage at the C-terminus, probably by a cysteine protease and may involve the removal of approximately 10-15 residues from the C-terminal end (PubMed:26342652). [UniProt]</p> |
| Cellular Localization | Lysosome. [UniProt]  |

## Images



ARG58407 anti-CLN5 antibody WB image

Western blot: 25 µg of Mouse heart lysate stained with ARG58407 anti-CLN5 antibody at 1:3000 dilution.