

## ARG58399 anti-CEBPE antibody

Package: 100 µl  
Store at: -20°C

### Summary

Product Description	Rabbit Polyclonal antibody recognizes CEBPE
Tested Reactivity	Hu, Ms
Tested Application	WB
Host	Rabbit
Clonality	Polyclonal
Isotype	IgG
Target Name	CEBPE
Species	Human
Immunogen	Recombinant fusion protein corresponding to aa. 1-190 of Human CEBPE (NP_001796.2).
Conjugation	Un-conjugated
Alternate Names	CCAAT/enhancer-binding protein epsilon; C/EBP epsilon; C/EBP-epsilon; CRP1

### Application Instructions

Application table	<table> <tr> <th>Application</th><th>Dilution</th></tr> <tr> <td>WB</td><td>1:500 - 1:2000</td></tr> </table>	Application	Dilution	WB	1:500 - 1:2000
Application	Dilution				
WB	1:500 - 1:2000				
Application Note	* The dilutions indicate recommended starting dilutions and the optimal dilutions or concentrations should be determined by the scientist.				
Positive Control	NCI-H460				
Observed Size	35 kDa				

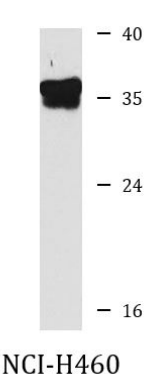
### Properties

Form	Liquid
Purification	Affinity purified.
Buffer	PBS (pH 7.3), 0.02% Sodium azide and 50% Glycerol.
Preservative	0.02% Sodium azide
Stabilizer	50% Glycerol
Storage instruction	For continuous use, store undiluted antibody at 2-8°C for up to a week. For long-term storage, aliquot and store at -20°C. Storage in frost free freezers is not recommended. Avoid repeated freeze/thaw cycles. Suggest spin the vial prior to opening. The antibody solution should be gently mixed before use.
Note	For laboratory research only, not for drug, diagnostic or other use.

Bioinformation

Gene Symbol	CEBPE
Gene Full Name	CCAAT/enhancer binding protein (C/EBP), epsilon
Background	The protein encoded by this gene is a bZIP transcription factor which can bind as a homodimer to certain DNA regulatory regions. It can also form heterodimers with the related protein CEBP-delta. The encoded protein may be essential for terminal differentiation and functional maturation of committed granulocyte progenitor cells. Mutations in this gene have been associated with Specific Granule Deficiency, a rare congenital disorder. Multiple variants of this gene have been described, but the full-length nature of only one has been determined. [provided by RefSeq, Jul 2008]
Function	C/EBP are DNA-binding proteins that recognize two different motifs: the CCAAT homology common to many promoters and the enhanced core homology common to many enhancers. [UniProt]
Calculated Mw	31 kDa
PTM	Phosphorylated. [UniProt]
Cellular Localization	Nucleus. [UniProt]

Images



ARG58399 anti-CEBPE antibody WB image

Western blot: 25 µg of NCI-H460 cell lysate stained with ARG58399 anti-CEBPE antibody at 1:1000 dilution.