

ARG58390 anti-CENPC antibody

Package: 100 µl
Store at: -20°C

Summary

Product Description	Rabbit Polyclonal antibody recognizes CENPC
Tested Reactivity	Hu, Ms, Rat
Tested Application	WB
Host	Rabbit
Clonality	Polyclonal
Isotype	IgG
Target Name	CENPC
Species	Human
Immunogen	Recombinant fusion protein corresponding to aa. 1-300 of Human CENPC (NP_001803.2).
Conjugation	Un-conjugated
Alternate Names	Centromere autoantigen C; Centromere protein C 1; CENPC1; Interphase centromere complex protein 7; CENP-C; MIF2; Centromere protein C; hcp-4; CENP-C 1

Application Instructions

Application table	Application	Dilution
	WB	1:500 - 1:2000
Application Note	* The dilutions indicate recommended starting dilutions and the optimal dilutions or concentrations should be determined by the scientist.	
Positive Control	HeLa	
Observed Size	130 kDa	

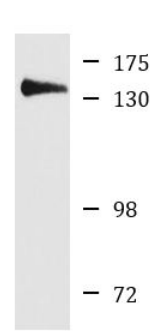
Properties

Form	Liquid
Purification	Affinity purified.
Buffer	PBS (pH 7.3), 0.02% Sodium azide and 50% Glycerol.
Preservative	0.02% Sodium azide
Stabilizer	50% Glycerol
Storage instruction	For continuous use, store undiluted antibody at 2-8°C for up to a week. For long-term storage, aliquot and store at -20°C. Storage in frost free freezers is not recommended. Avoid repeated freeze/thaw cycles. Suggest spin the vial prior to opening. The antibody solution should be gently mixed before use.
Note	For laboratory research only, not for drug, diagnostic or other use.

Bioinformation

Gene Symbol	CENPC
Gene Full Name	centromere protein C
Background	Centromere protein C 1 is a centromere autoantigen and a component of the inner kinetochore plate. The protein is required for maintaining proper kinetochore size and a timely transition to anaphase. A putative pseudogene exists on chromosome 12. [provided by RefSeq, Jul 2008]
Function	Component of the CENPA-NAC (nucleosome-associated) complex, a complex that plays a central role in assembly of kinetochore proteins, mitotic progression and chromosome segregation. The CENPA-NAC complex recruits the CENPA-CAD (nucleosome distal) complex and may be involved in incorporation of newly synthesized CENPA into centromeres. CENPC recruits DNA methylation and DNMT3B to both centromeric and pericentromeric satellite repeats and regulates the histone code in these regions. [UniProt]
Calculated Mw	107 kDa
Cellular Localization	Nucleus, Chromosome, centromere, kinetochore. [UniProt]

Images



HeLa

ARG58390 anti-CENPC antibody WB image

Western blot: 25 µg of HeLa cell lysate stained with ARG58390 anti-CENPC antibody at 1:1000 dilution.