

ARG58385 anti-CPE / Carboxypeptidase E antibody

Package: 100 µl
Store at: -20°C

Summary

Product Description	Rabbit Polyclonal antibody recognizes CPE / Carboxypeptidase E
Tested Reactivity	Hu, Ms
Tested Application	WB
Host	Rabbit
Clonality	Polyclonal
Isotype	IgG
Target Name	CPE / Carboxypeptidase E
Species	Human
Immunogen	Recombinant fusion protein corresponding to aa. 257-476 of Human CPE / Carboxypeptidase E (NP_001864.1).
Conjugation	Un-conjugated
Alternate Names	CPH; Carboxypeptidase H; Enkephalin convertase; CPE; Carboxypeptidase E; Prohormone-processing carboxypeptidase; EC 3.4.17.10

Application Instructions

Application table	<table> <tr> <th>Application</th><th>Dilution</th></tr> <tr> <td>WB</td><td>1:500 - 1:2000</td></tr> </table>	Application	Dilution	WB	1:500 - 1:2000
Application	Dilution				
WB	1:500 - 1:2000				
Application Note	* The dilutions indicate recommended starting dilutions and the optimal dilutions or concentrations should be determined by the scientist.				
Positive Control	A549				
Observed Size	55 kDa				

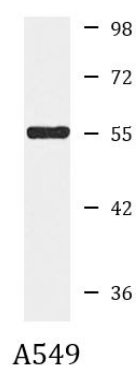
Properties

Form	Liquid
Purification	Affinity purified.
Buffer	PBS (pH 7.3), 0.02% Sodium azide and 50% Glycerol.
Preservative	0.02% Sodium azide
Stabilizer	50% Glycerol
Storage instruction	For continuous use, store undiluted antibody at 2-8°C for up to a week. For long-term storage, aliquot and store at -20°C. Storage in frost free freezers is not recommended. Avoid repeated freeze/thaw cycles. Suggest spin the vial prior to opening. The antibody solution should be gently mixed before use.
Note	For laboratory research only, not for drug, diagnostic or other use.

Bioinformation

Gene Symbol	CPE
Gene Full Name	carboxypeptidase E
Background	This gene encodes a carboxypeptidase that cleaves C-terminal amino acid residues and is involved in the biosynthesis of peptide hormones and neurotransmitters, including insulin. It is a peripheral membrane protein. The protein specifically binds regulated secretory pathway proteins, including prohormones, but not constitutively secreted proteins. Mutations in this gene are implicated in type II diabetes. [provided by RefSeq, Jul 2008]
Function	Removes residual C-terminal Arg or Lys remaining after initial endoprotease cleavage during prohormone processing. Processes proinsulin. [UniProt]
Calculated Mw	53 kDa
Cellular Localization	Cytoplasmic vesicle, secretory vesicle membrane, Peripheral membrane protein, Secreted, Nucleus. [UniProt]

Images



ARG58385 anti-CPE / Carboxypeptidase E antibody WB image

Western blot: 25 µg of A549 cell lysate stained with ARG58385 anti-CPE / Carboxypeptidase E antibody at 1:1000 dilution.