

## ARG58353 anti-BMP6 (precursor) antibody

Package: 100 µl  
Store at: -20°C

### Summary

Product Description	Rabbit Polyclonal antibody recognizes BMP6 (precursor)
Tested Reactivity	Hu, Ms, Rat
Tested Application	WB
Host	Rabbit
Clonality	Polyclonal
Isotype	IgG
Target Name	BMP6 (precursor)
Species	Human
Immunogen	Synthetic peptide corresponding to a sequence within aa. 100-200 of Human BMP6 (NP_001709.1).
Conjugation	Un-conjugated
Alternate Names	VG-1-related protein; VGR1; BMP-6; VG-1-R; Bone morphogenetic protein 6; VGR-1; VGR

### Application Instructions

Application table	<table> <tr> <th>Application</th><th>Dilution</th></tr> <tr> <td>WB</td><td>1:500 - 1:2000</td></tr> </table>	Application	Dilution	WB	1:500 - 1:2000
Application	Dilution				
WB	1:500 - 1:2000				
Application Note	* The dilutions indicate recommended starting dilutions and the optimal dilutions or concentrations should be determined by the scientist.				
Positive Control	Rat brain				
Observed Size	60 kDa				

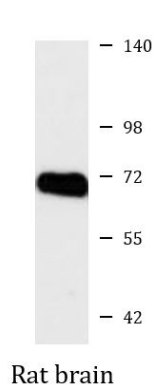
### Properties

Form	Liquid
Purification	Affinity purified.
Buffer	PBS (pH 7.3), 0.02% Sodium azide and 50% Glycerol.
Preservative	0.02% Sodium azide
Stabilizer	50% Glycerol
Storage instruction	For continuous use, store undiluted antibody at 2-8°C for up to a week. For long-term storage, aliquot and store at -20°C. Storage in frost free freezers is not recommended. Avoid repeated freeze/thaw cycles. Suggest spin the vial prior to opening. The antibody solution should be gently mixed before use.
Note	For laboratory research only, not for drug, diagnostic or other use.

## Bioinformation

Gene Symbol	BMP6
Gene Full Name	bone morphogenetic protein 6
Background	The bone morphogenetic proteins (BMPs) are a family of secreted signaling molecules that can induce ectopic bone growth. Many BMPs are part of the transforming growth factor-beta (TGFB) superfamily. BMPs were originally identified by an ability of demineralized bone extract to induce endochondral osteogenesis in vivo in an extraskeletal site. Based on its expression early in embryogenesis, the BMP encoded by this gene has a proposed role in early development. In addition, the fact that this BMP is closely related to BMP5 and BMP7 has lead to speculation of possible bone inductive activity. [provided by RefSeq, Jul 2008]
Function	Induces cartilage and bone formation. [UniProt]
Calculated Mw	57 kDa
Cellular Localization	Secreted. [UniProt]

## Images



ARG58353 anti-BMP6 (precursor) antibody WB image

Western blot: 25 µg of Rat brain lysate stained with ARG58353 anti-BMP6 (precursor) antibody at 1:1000 dilution.