

ARG58317 anti-Calmodulin antibody

Package: 100 µl
Store at: -20°C

Summary

Product Description	Rabbit Polyclonal antibody recognizes Calmodulin
Tested Reactivity	Hu, Ms, Rat
Tested Application	FACS, ICC/IF, IHC-P, IP, WB
Host	Rabbit
Clonality	Polyclonal
Isotype	IgG
Target Name	Calmodulin
Species	Human
Immunogen	Synthetic peptide derived from Human Calmodulin.
Conjugation	Un-conjugated
Alternate Names	LQT14; Calmodulin; CaM; PHKD; DD132; CAMI; caM; CALML2; CPVT4

Application Instructions

Application table	Application	Dilution
	FACS	1:50
	ICC/IF	1:50 - 1:200
	IHC-P	1:50 - 1:200
	IP	1:50
	WB	1:500 - 1:2000
Application Note	* The dilutions indicate recommended starting dilutions and the optimal dilutions or concentrations should be determined by the scientist.	
Positive Control	NIH/3T3	
Observed Size	~ 16 kDa	

Properties

Form	Liquid
Purification	Affinity purified.
Buffer	PBS (pH 7.4), 0.02% Sodium azide and 50% Glycerol.
Preservative	0.02% Sodium azide
Stabilizer	50% Glycerol
Storage instruction	For continuous use, store undiluted antibody at 2-8°C for up to a week. For long-term storage, aliquot

and store at -20°C. Storage in frost free freezers is not recommended. Avoid repeated freeze/thaw cycles. Suggest spin the vial prior to opening. The antibody solution should be gently mixed before use.

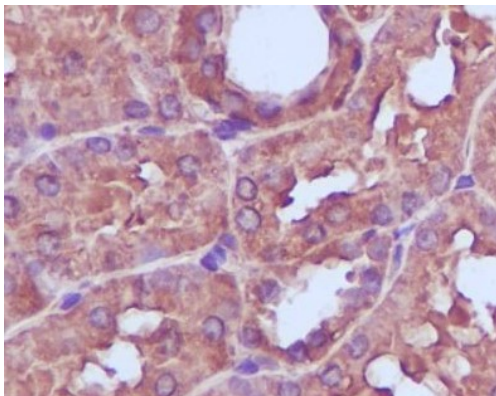
Note

For laboratory research only, not for drug, diagnostic or other use.

Bioinformation

Gene Symbol	CALM1
Gene Full Name	calmodulin 1 (phosphorylase kinase, delta)
Background	This gene encodes a member of the EF-hand calcium-binding protein family. It is one of three genes which encode an identical calcium binding protein which is one of the four subunits of phosphorylase kinase. Two pseudogenes have been identified on chromosome 7 and X. Multiple transcript variants encoding different isoforms have been found for this gene.[provided by RefSeq, Oct 2009]
Function	Calmodulin mediates the control of a large number of enzymes, ion channels, aquaporins and other proteins by Ca(2+). Among the enzymes to be stimulated by the calmodulin-Ca(2+) complex are a number of protein kinases and phosphatases. Together with CCP110 and centrin, is involved in a genetic pathway that regulates the centrosome cycle and progression through cytokinesis. [UniProt]
Calculated Mw	17 kDa
Cellular Localization	Cytoplasm > Cytoskeleton > Spindle pole. [UniProt]

Images



ARG58317 anti-Calmodulin antibody IHC-P image

Immunohistochemistry: Paraffin-embedded Human kidney stained with ARG58317 anti-Calmodulin antibody.



ARG58317 anti-Calmodulin antibody WB image

Western blot: NIH/3T3 cell lysate stained with ARG58317 anti-Calmodulin antibody.