

ARG58301 anti-MTCO1 antibody

Package: 50 µg
Store at: -20°C

Summary

Product Description	Rabbit Polyclonal antibody recognizes MTCO1
Tested Reactivity	Hu, Ms, Rat
Tested Application	ICC/IF, IHC-P, WB
Host	Rabbit
Clonality	Polyclonal
Isotype	IgG
Target Name	MTCO1
Species	Human
Immunogen	Synthetic peptide corresponding to a sequence at the C-terminus of Human MTCO1(501-514aa PYHTFEPPVYMKS).
Conjugation	Un-conjugated
Alternate Names	Cytochrome c oxidase subunit 1; EC 1.9.3.1; COX1; Cytochrome c oxidase polypeptide I; MTCO1; COI

Application Instructions

Application table	Application	Dilution
	ICC/IF	0.5 - 1 µg/ml
	IHC-P	0.5 - 1 µg/ml
	WB	0.1 - 0.5 µg/ml
Application Note	IHC-P: Antigen Retrieval: By heat mediation. * The dilutions indicate recommended starting dilutions and the optimal dilutions or concentrations should be determined by the scientist.	

Properties

Form	Liquid
Purification	Affinity purification with immunogen.
Buffer	0.9% NaCl, 0.2% Na ₂ HPO ₄ , 0.05% Thimerosal, 0.05% Sodium azide and 5% BSA.
Preservative	0.05% Thimerosal and 0.05% Sodium azide
Stabilizer	5% BSA
Concentration	0.5 mg/ml
Storage instruction	For continuous use, store undiluted antibody at 2-8°C for up to a week. For long-term storage, aliquot and store at -20°C or below. Storage in frost free freezers is not recommended. Avoid repeated freeze/thaw cycles. Suggest spin the vial prior to opening. The antibody solution should be gently mixed before use.

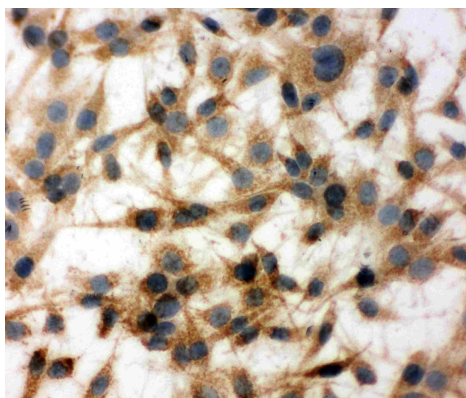
Note

For laboratory research only, not for drug, diagnostic or other use.

Bioinformation

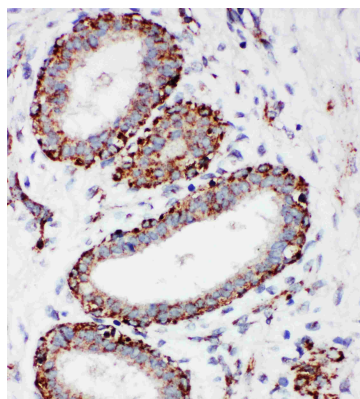
Gene Symbol	MT-CO1
Gene Full Name	mitochondrially encoded cytochrome c oxidase I
Function	Cytochrome c oxidase is the component of the respiratory chain that catalyzes the reduction of oxygen to water. Subunits 1-3 form the functional core of the enzyme complex. CO I is the catalytic subunit of the enzyme. Electrons originating in cytochrome c are transferred via the copper A center of subunit 2 and heme A of subunit 1 to the bimetallic center formed by heme A3 and copper B. [UniProt]
Calculated Mw	57 kDa
Cellular Localization	Mitochondrion inner membrane; Multi-pass membrane protein. [UniProt]

Images



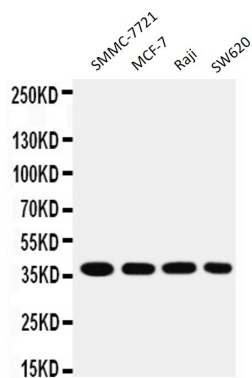
ARG58301 anti-MTCO1 antibody ICC image

Immunocytochemistry: C6 cells stained with ARG58301 anti-MTCO1 antibody.



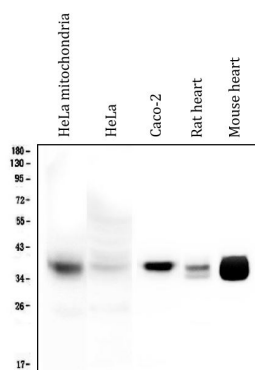
ARG58301 anti-MTCO1 antibody IHC-P image

Immunohistochemistry: Paraffin-embedded Human mammary cancer stained with ARG58301 anti-MTCO1 antibody.



ARG58301 anti-MTCO1 antibody WB image

Western blot: SMMC-7721, MCF-7, Raji and SW620 cell lysates stained with ARG58301 anti-MTCO1 antibody.



ARG58301 anti-MTCO1 antibody WB image

Western blot: The samples were loaded under reducing conditions. 20 µg of HeLa mitochondria, 20 µg of HeLa, 50 µg of Caco-2, 50 µg of Rat heart and 50 µg of Mouse heart lysates stained with ARG58301 anti-MTCO1 antibody at 0.5 µg/ml dilution, overnight at 4°C.