

## ARG58296 anti-RUNX1T1 / ETO antibody

Package: 50 µg  
Store at: -20°C

### Summary

Product Description	Rabbit Polyclonal antibody recognizes RUNX1T1 / ETO
Tested Reactivity	Hu, Ms
Tested Application	FACS, ICC/IF, IHC-P, WB
Host	Rabbit
Clonality	Polyclonal
Isotype	IgG
Target Name	RUNX1T1 / ETO
Species	Human
Immunogen	E. coli-derived Human RUNX1T1/ETO recombinant protein (Position: T335-D510).
Conjugation	Un-conjugated
Alternate Names	AML1T1; MTG8; CBFA2T1; ZMYND2; Protein MTG8; Protein CBFA2T1; Cyclin-D-related protein; Eight twenty one protein; CDR; AML1-MTG8; Protein ETO; Zinc finger MYND domain-containing protein 2; ETO

### Application Instructions

Application table	Application	Dilution
	FACS	1:150 - 1:500
	ICC/IF	1:200 - 1:1000
	IHC-P	0.5 - 1 µg/ml
	WB	0.1 - 0.5 µg/ml
Application Note	IHC-P: Antigen Retrieval: Heat mediation was performed in Citrate buffer (pH 6.0) for 20 min. * The dilutions indicate recommended starting dilutions and the optimal dilutions or concentrations should be determined by the scientist.	

### Properties

Form	Liquid
Buffer	0.9% NaCl, 0.2% Na <sub>2</sub> HPO <sub>4</sub> , 0.05% Sodium azide and 4% Trehalose.
Preservative	0.05% Sodium azide
Stabilizer	4% Trehalose
Concentration	0.5 mg/ml
Storage instruction	For continuous use, store undiluted antibody at 2-8°C for up to a week. For long-term storage, aliquot and store at -20°C or below. Storage in frost free freezers is not recommended. Avoid repeated freeze/thaw cycles. Suggest spin the vial prior to opening. The antibody solution should be gently mixed

before use.

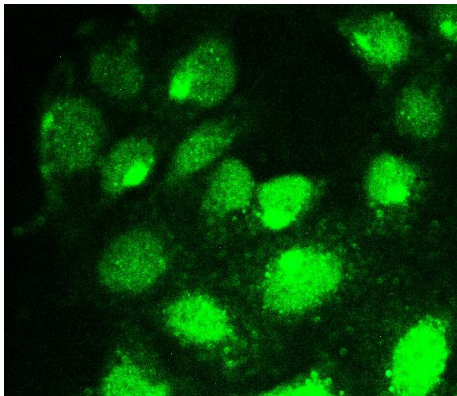
Note

For laboratory research only, not for drug, diagnostic or other use.

## Bioinformation

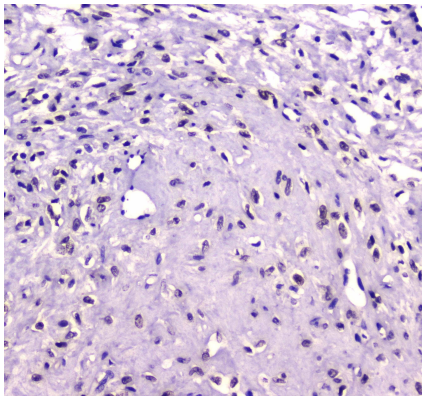
Gene Symbol	RUNX1T1
Gene Full Name	runt-related transcription factor 1; translocated to, 1 (cyclin D-related)
Background	This gene encodes a member of the myeloid translocation gene family which interact with DNA-bound transcription factors and recruit a range of corepressors to facilitate transcriptional repression. The t(8;21)(q22;q22) translocation is one of the most frequent karyotypic abnormalities in acute myeloid leukemia. The translocation produces a chimeric gene made up of the 5'-region of the runt-related transcription factor 1 gene fused to the 3'-region of this gene. The chimeric protein is thought to associate with the nuclear corepressor/histone deacetylase complex to block hematopoietic differentiation. Alternative splicing results in multiple transcript variants. [provided by RefSeq, Nov 2010]
Function	Transcription regulator that exerts its function by binding to histone deacetylases and transcription factors. Can repress transactivation mediated by TCF12. [UniProt]
Calculated Mw	68 kDa
Cellular Localization	Nucleus. [UniProt]

## Images



ARG58296 anti-RUNX1T1 / ETO antibody ICC/IF image

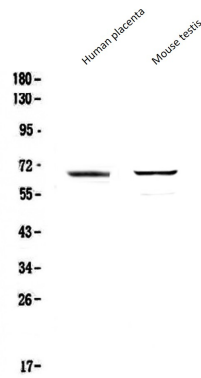
Immunofluorescence: U2OS cells were blocked with 10% goat serum and then stained with ARG58296 anti-RUNX1T1 / ETO antibody (green) at 2 µg/ml dilution, overnight at 4°C.



ARG58296 anti-RUNX1T1 / ETO antibody IHC-P image

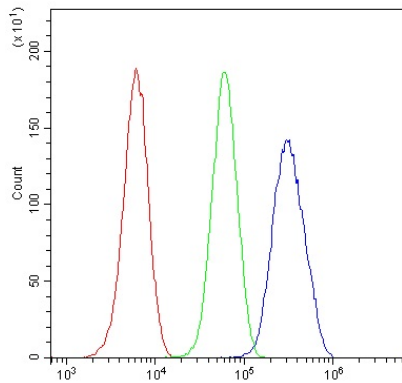
Immunohistochemistry: Paraffin-embedded Human mammary cancer. Antigen Retrieval: Heat mediated was performed in Citrate buffer (pH 6.0, epitope retrieval solution) for 20 min. The tissue section was blocked with 10% goat serum. The tissue section was then stained with ARG58296 anti-RUNX1T1 / ETO antibody at 1 µg/ml dilution, overnight at 4°C.

#### ARG58296 anti-RUNX1T1 / ETO antibody WB image



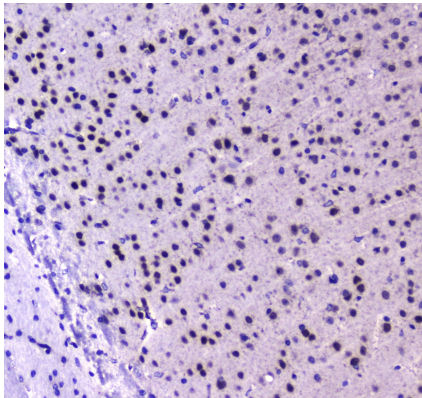
Western blot: 50 µg of Human placenta and Mouse testis lysates stained with ARG58296 anti-RUNX1T1 / ETO antibody at 0.5 µg/ml, overnight at 4°C, under reducing conditions.

#### ARG58296 anti-RUNX1T1 / ETO antibody FACS image



Flow Cytometry: U2OS cells were blocked with 10% normal goat serum and then stained with ARG58296 anti-RUNX1T1 / ETO antibody (blue) at 1 µg/10<sup>6</sup> cells for 30 min at 20°C, followed by incubation with DyLight<sup>®</sup>488 labelled secondary antibody. Isotype control antibody (green) was rabbit IgG (1 µg/10<sup>6</sup> cells) used under the same conditions. Unlabelled sample (red) was also used as a control.

#### ARG58296 anti-RUNX1T1 / ETO antibody IHC-P image



Immunohistochemistry: Paraffin-embedded Mouse brain tissue. Antigen Retrieval: Heat mediated was performed in Citrate buffer (pH 6.0, epitope retrieval solution) for 20 min. The tissue section was blocked with 10% goat serum. The tissue section was then stained with ARG58296 anti-RUNX1T1 / ETO antibody at 1 µg/ml dilution, overnight at 4°C.