

## ARG58279 anti-CBG / SerpinA6 antibody

Package: 100 µl  
Store at: -20°C

### Summary

Product Description	Rabbit Polyclonal antibody recognizes CBG / SerpinA6
Tested Reactivity	Hu
Tested Application	WB
Host	Rabbit
Clonality	Polyclonal
Isotype	IgG
Target Name	CBG / SerpinA6
Species	Human
Immunogen	KLH-conjugated synthetic peptide corresponding to aa. 197-225 (Center) of Human CBG / SerpinA6.
Conjugation	Un-conjugated
Alternate Names	Serpin A6; Corticosteroid-binding globulin; CBG; Transcortin

### Application Instructions

Application table	Application	Dilution
	WB	1:1000
Application Note	* The dilutions indicate recommended starting dilutions and the optimal dilutions or concentrations should be determined by the scientist.	
Positive Control	Human blood plasma	

### Properties

Form	Liquid
Purification	Purification with Protein A and immunogen peptide.
Buffer	PBS and 0.09% (W/V) Sodium azide.
Preservative	0.09% (W/V) Sodium azide.
Storage instruction	For continuous use, store undiluted antibody at 2-8°C for up to a week. For long-term storage, aliquot and store at -20°C or below. Storage in frost free freezers is not recommended. Avoid repeated freeze/thaw cycles. Suggest spin the vial prior to opening. The antibody solution should be gently mixed before use.
Note	For laboratory research only, not for drug, diagnostic or other use.

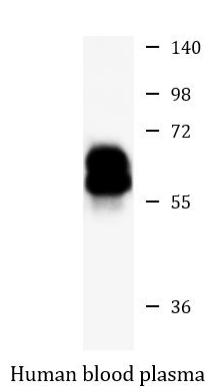
### Bioinformation

Gene Symbol	SERPINA6
-------------	----------

Gene Full Name	serpin peptidase inhibitor, clade A (alpha-1 antiproteinase, antitrypsin), member 6
Background	This gene encodes an alpha-globulin protein with corticosteroid-binding properties. This is the major transport protein for glucocorticoids and progestins in the blood of most vertebrates. The gene localizes to a chromosomal region containing several closely related serine protease inhibitors which may have evolved by duplication events. [provided by RefSeq, Jul 2008]
Function	Major transport protein for glucocorticoids and progestins in the blood of almost all vertebrate species. [UniProt]
Calculated Mw	45 kDa
PTM	N-glycosylated; binds 5 oligosaccharide chains.  Glycosylation in position Asn-260 is needed for steroid binding. [UniProt]
Cellular Localization	Secreted. [UniProt]

## Images

---



ARG58279 anti-CBG / SerpinA6 antibody WB image

Western blot: 35 µg of Human blood plasma lysate stained with ARG58279 anti-CBG / SerpinA6 antibody at 1:1000 dilution.