

ARG58162 anti-Phospholipase C beta 1 antibody

Package: 100 µl
Store at: -20°C

Summary

Product Description	Rabbit Polyclonal antibody recognizes Phospholipase C beta 1
Tested Reactivity	Hu, Ms, Rat
Tested Application	IHC-P, WB
Host	Rabbit
Clonality	Polyclonal
Isotype	IgG
Target Name	Phospholipase C beta 1
Species	Human
Immunogen	Recombinant fusion protein corresponding to aa. 917-1216 of Human Phospholipase C beta 1 (NP_056007.1).
Conjugation	Un-conjugated
Alternate Names	EC 3.1.4.11; EIEE12; PLCB1B; PLC154; PLCB1A; Phospholipase C-I; PLC-I; Phosphoinositide phospholipase C-beta-1; Phospholipase C-beta-1; PLC-154; 1-phosphatidylinositol 4,5-bisphosphate phosphodiesterase beta-1; PI-PLC; PLC-beta-1

Application Instructions

Application table	Application	Dilution
	IHC-P	1:50 - 1:200
	WB	1:500 - 1:2000
Application Note	* The dilutions indicate recommended starting dilutions and the optimal dilutions or concentrations should be determined by the scientist.	
Positive Control	NCI-H460	
Observed Size	145 kDa	

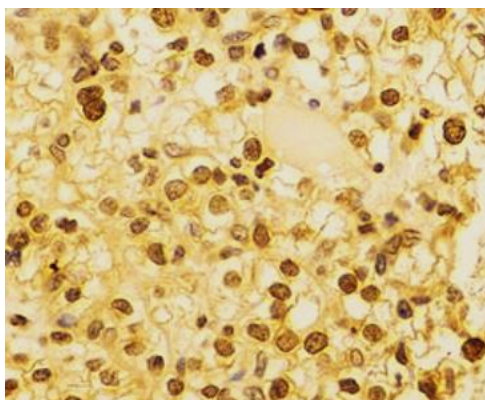
Properties

Form	Liquid
Purification	Affinity purified.
Buffer	PBS (pH 7.3), 0.02% Sodium azide and 50% Glycerol.
Preservative	0.02% Sodium azide
Stabilizer	50% Glycerol
Storage instruction	For continuous use, store undiluted antibody at 2-8°C for up to a week. For long-term storage, aliquot and store at -20°C. Storage in frost free freezers is not recommended. Avoid repeated freeze/thaw cycles. Suggest spin the vial prior to opening. The antibody solution should be gently mixed before use.

Bioinformation

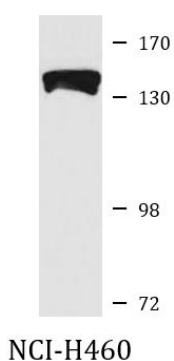
Gene Symbol	PLCB1
Gene Full Name	phospholipase C, beta 1 (phosphoinositide-specific)
Background	The protein encoded by this gene catalyzes the formation of inositol 1,4,5-trisphosphate and diacylglycerol from phosphatidylinositol 4,5-bisphosphate. This reaction uses calcium as a cofactor and plays an important role in the intracellular transduction of many extracellular signals. This gene is activated by two G-protein alpha subunits, alpha-q and alpha-11. Two transcript variants encoding different isoforms have been found for this gene. [provided by RefSeq, Jul 2008]
Function	The production of the second messenger molecules diacylglycerol (DAG) and inositol 1,4,5-trisphosphate (IP3) is mediated by activated phosphatidylinositol-specific phospholipase C enzymes. [UniProt]
Calculated Mw	139 kDa
Cellular Localization	Nucleus membrane, Cytoplasm. [UniProt]

Images



ARG58162 anti-Phospholipase C beta 1 antibody IHC-P image

Immunohistochemistry: Paraffin-embedded Human kidney stained with ARG58162 anti-Phospholipase C beta 1 antibody at 1:100 dilution.



ARG58162 anti-Phospholipase C beta 1 antibody WB image

Western blot: 25 µg of NCI-H460 cell lysate stained with ARG58162 anti-Phospholipase C beta 1 antibody at 1:1000 dilution.