

ARG58140 anti-PLC gamma 2 antibody

Package: 50 µg
Store at: -20°C

Summary

Product Description	Rabbit Polyclonal antibody recognizes PLC gamma 2
Tested Reactivity	Hu, Ms, Rat
Tested Application	IHC-P, WB
Host	Rabbit
Clonality	Polyclonal
Isotype	IgG
Target Name	PLC gamma 2
Species	Human
Immunogen	Partial recombinant protein corresponding to aa. 1201-1258 of Human PLC gamma 2.
Conjugation	Un-conjugated
Alternate Names	Phospholipase C-gamma-2; PLC-IV; Phosphoinositide phospholipase C-gamma-2; PLC-gamma-2; Phospholipase C-IV; 1-phosphatidylinositol 4,5-bisphosphate phosphodiesterase gamma-2; FCAS3; APLAID; EC 3.1.4.11

Application Instructions

Application table	Application	Dilution
	IHC-P	1 - 2 µg/ml
	WB	0.5 - 1 µg/ml
Application Note	IHC-P: Antigen Retrieval: Steam tissue section in Citrate buffer (pH 6.0) for 20 min followed by cooling at RT. * The dilutions indicate recommended starting dilutions and the optimal dilutions or concentrations should be determined by the scientist.	

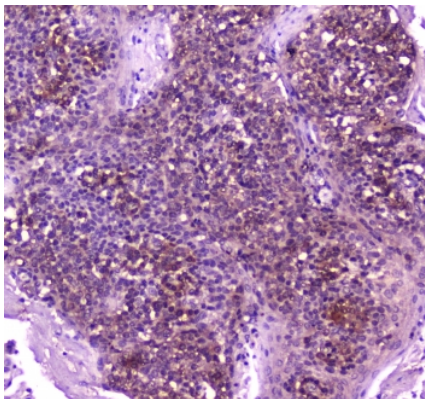
Properties

Form	Liquid
Purification	Affinity purification with immunogen.
Buffer	PBS, 0.025% Sodium azide and 2% Trehalose.
Preservative	0.025% Sodium azide
Stabilizer	2% Trehalose
Concentration	0.5 mg/ml
Storage instruction	For continuous use, store undiluted antibody at 2-8°C for up to a week. For long-term storage, aliquot and store at -20°C or below. Storage in frost free freezers is not recommended. Avoid repeated freeze/thaw cycles. Suggest spin the vial prior to opening. The antibody solution should be gently mixed before use.

Bioinformation

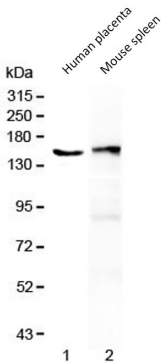
Gene Symbol	PLCG2
Gene Full Name	phospholipase C, gamma 2 (phosphatidylinositol-specific)
Background	The protein encoded by this gene is a transmembrane signaling enzyme that catalyzes the conversion of 1-phosphatidyl-1D-myo-inositol 4,5-bisphosphate to 1D-myo-inositol 1,4,5-trisphosphate (IP3) and diacylglycerol (DAG) using calcium as a cofactor. IP3 and DAG are second messenger molecules important for transmitting signals from growth factor receptors and immune system receptors across the cell membrane. Mutations in this gene have been found in autoinflammation, antibody deficiency, and immune dysregulation syndrome and familial cold autoinflammatory syndrome 3. [provided by RefSeq, Mar 2014]
Function	The production of the second messenger molecules diacylglycerol (DAG) and inositol 1,4,5-trisphosphate (IP3) is mediated by activated phosphatidylinositol-specific phospholipase C enzymes. It is a crucial enzyme in transmembrane signaling. [UniProt]
Calculated Mw	148 kDa
PTM	Phosphorylated on tyrosine residues by CSF1R (By similarity). Phosphorylated on tyrosine residues by BTK and SYK; upon ligand-induced activation of a variety of growth factor receptors and immune system receptors. Phosphorylation leads to increased phospholipase activity. [UniProt]
Cellular Localization	Cytoplasmic, cell membrane. [UniProt]

Images



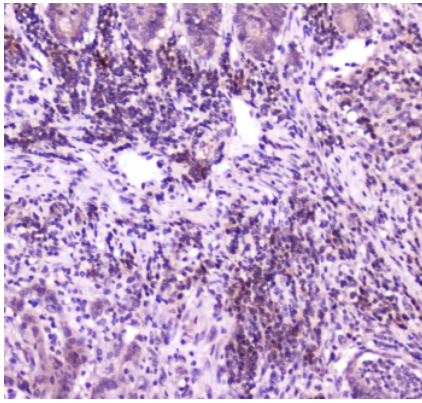
ARG58140 anti-PLC gamma 2 antibody IHC-P image

Immunohistochemistry: Formalin-fixed and paraffin-embedded Human tonsil tissue stained with ARG58140 anti-PLC gamma 2 antibody at 1 µg/ml dilution. Antigen Retrieval: Steam tissue section in Citrate buffer (pH 6.0) for 20 min followed by cooling at RT.



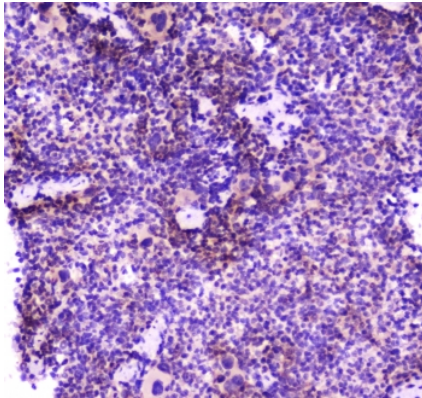
ARG58140 anti-PLC gamma 2 antibody WB image

Western blot: Human placenta and Mouse spleen lysate stained with ARG58140 anti-PLC gamma 2 antibody at 0.5 µg/ml dilution.



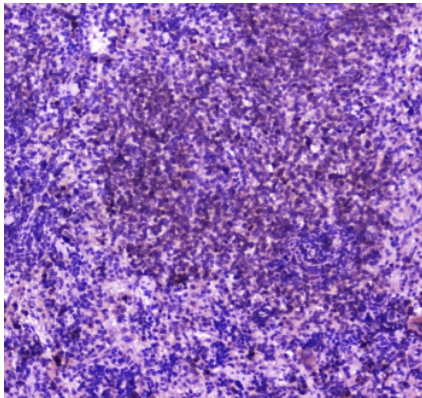
ARG58140 anti-PLC gamma 2 antibody IHC-P image

Immunohistochemistry: Formalin-fixed and paraffin-embedded Human intestinal cancer tissue stained with ARG58140 anti-PLC gamma 2 antibody at 1 µg/ml dilution. Antigen Retrieval: Steam tissue section in Citrate buffer (pH 6.0) for 20 min followed by cooling at RT.



ARG58140 anti-PLC gamma 2 antibody IHC-P image

Immunohistochemistry: Formalin-fixed and paraffin-embedded Mouse spleen tissue stained with ARG58140 anti-PLC gamma 2 antibody at 1 µg/ml dilution. Antigen Retrieval: Steam tissue section in Citrate buffer (pH 6.0) for 20 min followed by cooling at RT.



ARG58140 anti-PLC gamma 2 antibody IHC-P image

Immunohistochemistry: Formalin-fixed and paraffin-embedded Rat spleen tissue stained with ARG58140 anti-PLC gamma 2 antibody at 1 µg/ml dilution. Antigen Retrieval: Steam tissue section in Citrate buffer (pH 6.0) for 20 min followed by cooling at RT.