

ARG58071 anti-alpha 1 Antichymotrypsin antibody

Package: 100 µl
Store at: -20°C

Summary

Product Description	Rabbit Polyclonal antibody recognizes alpha 1 Antichymotrypsin
Tested Reactivity	Hu
Tested Application	IHC-P, WB
Host	Rabbit
Clonality	Polyclonal
Isotype	IgG
Target Name	alpha 1 Antichymotrypsin
Species	Human
Immunogen	Recombinant fusion protein corresponding to aa. 24-423 of Human alpha 1 Antichymotrypsin (NP_001076.2).
Conjugation	Un-conjugated
Alternate Names	GIG24; GIG25; Cell growth-inhibiting gene 24/25 protein; Alpha-1-antichymotrypsin; ACT; Serpin A3; AACT

Application Instructions

Application table	Application	Dilution
	IHC-P	1:50 - 1:100
	WB	1:500 - 1:2000
Application Note	* The dilutions indicate recommended starting dilutions and the optimal dilutions or concentrations should be determined by the scientist.	
Positive Control	Mouse testis	
Observed Size	~ 47 kDa	

Properties

Form	Liquid
Purification	Affinity purified.
Buffer	PBS (pH 7.3), 0.02% Sodium azide and 50% Glycerol.
Preservative	0.02% Sodium azide
Stabilizer	50% Glycerol
Storage instruction	For continuous use, store undiluted antibody at 2-8°C for up to a week. For long-term storage, aliquot and store at -20°C. Storage in frost free freezers is not recommended. Avoid repeated freeze/thaw cycles. Suggest spin the vial prior to opening. The antibody solution should be gently mixed before use.

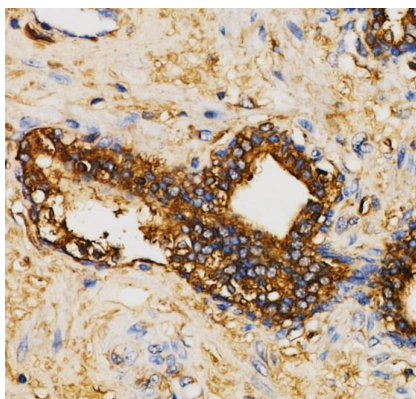
Note

For laboratory research only, not for drug, diagnostic or other use.

Bioinformation

Gene Symbol	SERPINA3
Gene Full Name	serpin peptidase inhibitor, clade A (alpha-1 antiproteinase, antitrypsin), member 3
Background	The protein encoded by this gene is a plasma protease inhibitor and member of the serine protease inhibitor class. Polymorphisms in this protein appear to be tissue specific and influence protease targeting. Variations in this protein's sequence have been implicated in Alzheimer's disease, and deficiency of this protein has been associated with liver disease. Mutations have been identified in patients with Parkinson disease and chronic obstructive pulmonary disease. [provided by RefSeq, Jul 2008]
Function	Although its physiological function is unclear, it can inhibit neutrophil cathepsin G and mast cell chymase, both of which can convert angiotensin-1 to the active angiotensin-2. [UniProt]
Calculated Mw	48 kDa
PTM	N- and O-glycosylated. [UniProt]
Cellular Localization	Secreted. [UniProt]

Images



ARG58071 anti-alpha 1 Antichymotrypsin antibody IHC-P image

Immunohistochemistry: Human prostate cancer stained with ARG58071 anti-alpha 1 Antichymotrypsin antibody at 1:100 dilution.