

**ARG58054**  
**anti-ATG12 antibody**Package: 100 µl  
Store at: -20°C

### Summary

Product Description	Rabbit Polyclonal antibody recognizes ATG12
Tested Reactivity	Hu
Tested Application	ICC/IF, IHC-P, WB
Host	Rabbit
Clonality	Polyclonal
Isotype	IgG
Target Name	ATG12
Species	Human
Immunogen	Synthetic peptide derived from Human ATG12.
Conjugation	Un-conjugated
Alternate Names	Ubiquitin-like protein ATG12; FBR93; HAPG12; APG12-like; Autophagy-related protein 12; APG12L; APG12

### Application Instructions

Application table	Application	Dilution
	ICC/IF	1:50 - 1:200
	IHC-P	1:50 - 1:200
	WB	1:500 - 1:2000
Application Note	* The dilutions indicate recommended starting dilutions and the optimal dilutions or concentrations should be determined by the scientist.	
Positive Control	293	
Observed Size	~ 18 kDa	

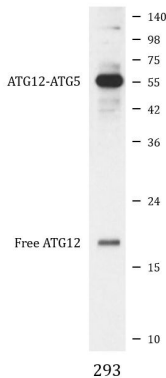
### Properties

Form	Liquid
Purification	Affinity purified.
Buffer	PBS (pH 7.4), 0.02% Sodium azide and 50% Glycerol.
Preservative	0.02% Sodium azide
Stabilizer	50% Glycerol
Storage instruction	For continuous use, store undiluted antibody at 2-8°C for up to a week. For long-term storage, aliquot and store at -20°C. Storage in frost free freezers is not recommended. Avoid repeated freeze/thaw cycles. Suggest spin the vial prior to opening. The antibody solution should be gently mixed before use.

Bioinformation

Gene Symbol	ATG12
Gene Full Name	autophagy related 12
Background	Autophagy is a process of bulk protein degradation in which cytoplasmic components, including organelles, are enclosed in double-membrane structures called autophagosomes and delivered to lysosomes or vacuoles for degradation. ATG12 is the human homolog of a yeast protein involved in autophagy (Mizushima et al., 1998 [PubMed 9852036]).[supplied by OMIM, Mar 2008]
Function	Ubiquitin-like protein involved in autophagy vesicles formation. Conjugation with ATG5 through a ubiquitin-like conjugating system involving also ATG7 as an E1-like activating enzyme and ATG10 as an E2-like conjugating enzyme, is essential for its function. The ATG12-ATG5 conjugate acts as an E3-like enzyme which is required for lipidation of ATG8 family proteins and their association to the vesicle membranes. The ATG12-ATG5 conjugate also regulates negatively the innate antiviral immune response by blocking the type I IFN production pathway through direct association with RARRES3 and MAVS. Plays also a role in translation or delivery of incoming viral RNA to the translation apparatus. [UniProt]
Calculated Mw	15 kDa
PTM	Acetylated by EP300. [UniProt]
Cellular Localization	Preautophagosomal structure membrane > Peripheral membrane protein. [UniProt]

Images



ARG58054 anti-ATG12 antibody WB image

Western blot: 293 cell lysate stained with ARG58054 anti-ATG12 antibody.