

ARG58036 anti-Mesothelin antibody

Package: 50 µg
Store at: -20°C

Summary

Product Description	Rabbit Polyclonal antibody recognizes Mesothelin
Tested Reactivity	Ms
Tested Application	IHC-P
Host	Rabbit
Clonality	Polyclonal
Isotype	IgG
Target Name	Mesothelin
Species	Mouse
Immunogen	Synthetic peptide corresponding to aa. 308-576 of Mouse Mesothelin.
Conjugation	Un-conjugated
Alternate Names	MPF; Mesothelin; CAK1 antigen; Pre-pro-megakaryocyte-potentiating factor; SMRP

Application Instructions

Application table	Application	Dilution
	IHC-P	0.5 - 1 µg/ml
Application Note	IHC-P: Antigen Retrieval: Boil tissue section in 10mM Citrate buffer (pH 6.0) for 20 min followed by cooling at RT. * The dilutions indicate recommended starting dilutions and the optimal dilutions or concentrations should be determined by the scientist.	

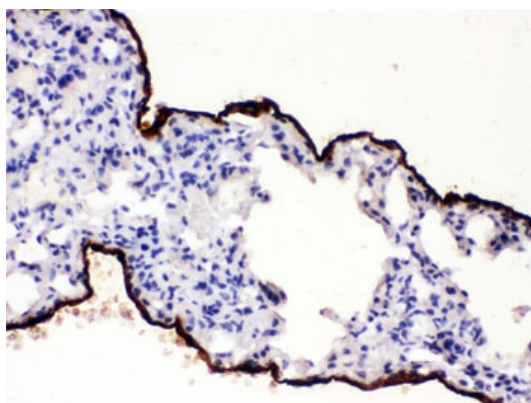
Properties

Form	Liquid
Purification	Affinity purification with immunogen.
Buffer	PBS, 0.025% Sodium azide and 2.5% BSA.
Preservative	0.025% Sodium azide
Stabilizer	2.5% BSA
Concentration	0.5 mg/ml
Storage instruction	For continuous use, store undiluted antibody at 2-8°C for up to a week. For long-term storage, aliquot and store at -20°C or below. Storage in frost free freezers is not recommended. Avoid repeated freeze/thaw cycles. Suggest spin the vial prior to opening. The antibody solution should be gently mixed before use.
Note	For laboratory research only, not for drug, diagnostic or other use.

Bioinformation

Gene Symbol	MSLN
Gene Full Name	mesothelin
Background	This gene encodes a precursor protein that is cleaved into two products, megakaryocyte potentiating factor and mesothelin. Megakaryocyte potentiation factor functions as a cytokine that can stimulate colony formation in bone marrow megakaryocytes. Mesothelin is a glycosylphosphatidylinositol-anchored cell-surface protein that may function as a cell adhesion protein. This protein is overexpressed in epithelial mesotheliomas, ovarian cancers and in specific squamous cell carcinomas. Alternative splicing results in multiple transcript variants.[provided by RefSeq, Apr 2010]
Function	<p>Membrane-anchored forms may play a role in cellular adhesion.</p> <p>Megakaryocyte-potentiating factor (MPF) potentiates megakaryocyte colony formation in vitro. [UniProt]</p>
Calculated Mw	69 kDa
PTM	<p>Both MPF and the cleaved form of mesothelin are N-glycosylated.</p> <p>Proteolytically cleaved by a furin-like convertase to generate megakaryocyte-potentiating factor (MPF), and the cleaved form of mesothelin. [UniProt]</p>

Images



ARG58036 anti-Mesothelin antibody IHC-P image

Immunohistochemistry: Formalin-fixed and paraffin-embedded Mouse lung stained with ARG58036 anti-Mesothelin antibody.
Antigen Retrieval: Boil tissue section in 10mM Citrate buffer (pH 6.0) for 20 min followed by cooling at RT.