

ARG58016 anti-gamma Catenin antibody

Package: 50 µg
Store at: -20°C

Summary

Product Description	Rabbit Polyclonal antibody recognizes gamma Catenin
Tested Reactivity	Hu, Ms, Rat
Tested Application	FACS, ICC/IF, IHC-Fr, IHC-P, WB
Host	Rabbit
Clonality	Polyclonal
Isotype	IgG
Target Name	gamma Catenin
Species	Human
Immunogen	Partial recombinant protein corresponding to aa. 556-745 of Human gamma Catenin.
Conjugation	Un-conjugated
Alternate Names	PKGB; DP3; CTNNG; Desmoplakin-3; DPIII; PDGB; ARVD12; Catenin gamma; Junction plakoglobin; Desmoplakin III

Application Instructions

Application table	Application	Dilution
	FACS	1:150 - 1:500
	ICC/IF	0.5 - 1 µg/ml
	IHC-Fr	0.5 - 1 µg/ml
	IHC-P	1 - 5 µg/ml
	WB	0.5 - 1 µg/ml
Application Note	* The dilutions indicate recommended starting dilutions and the optimal dilutions or concentrations should be determined by the scientist.	
Observed Size	~ 86 kDa	

Properties

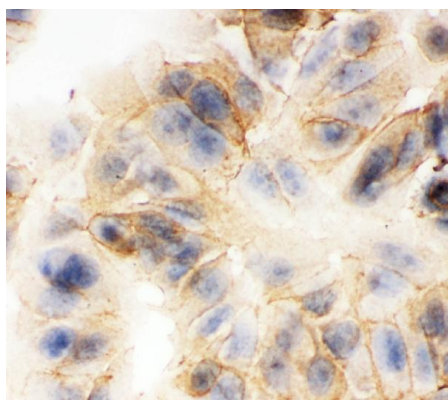
Form	Liquid
Purification	Affinity purification with immunogen.
Buffer	PBS, 0.025% Sodium azide and 2.5% BSA.
Preservative	0.025% Sodium azide
Stabilizer	2.5% BSA
Concentration	0.5 mg/ml

Storage instruction	For continuous use, store undiluted antibody at 2-8°C for up to a week. For long-term storage, aliquot and store at -20°C or below. Storage in frost free freezers is not recommended. Avoid repeated freeze/thaw cycles. Suggest spin the vial prior to opening. The antibody solution should be gently mixed before use.
Note	For laboratory research only, not for drug, diagnostic or other use.

Bioinformation

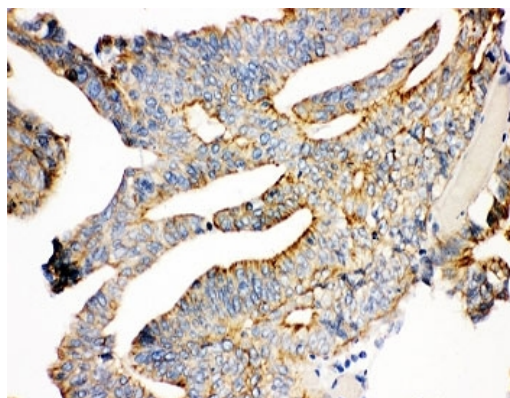
Gene Symbol	JUP
Gene Full Name	junction plakoglobin
Background	This gene encodes a major cytoplasmic protein which is the only known constituent common to submembranous plaques of both desmosomes and intermediate junctions. This protein forms distinct complexes with cadherins and desmosomal cadherins and is a member of the catenin family since it contains a distinct repeating amino acid motif called the armadillo repeat. Mutation in this gene has been associated with Naxos disease. Alternative splicing occurs in this gene; however, not all transcripts have been fully described. [provided by RefSeq, Jul 2008]
Function	Common junctional plaque protein. The membrane-associated plaques are architectural elements in an important strategic position to influence the arrangement and function of both the cytoskeleton and the cells within the tissue. The presence of plakoglobin in both the desmosomes and in the intermediate junctions suggests that it plays a central role in the structure and function of submembranous plaques. Acts as a substrate for VE-PTP and is required by it to stimulate VE-cadherin function in endothelial cells. Can replace beta-catenin in E-cadherin/catenin adhesion complexes which are proposed to couple cadherins to the actin cytoskeleton (By similarity). [UniProt]
Calculated Mw	82 kDa
PTM	May be phosphorylated by FER. [UniProt]

Images



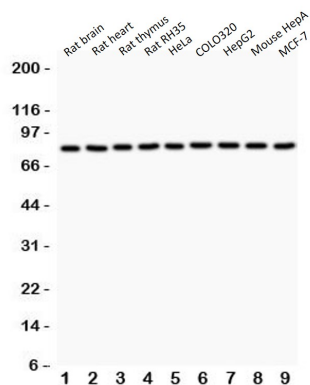
ARG58016 anti-gamma Catenin antibody ICC image

Immunocytochemistry: MCF-7 cells were blocked with 10% goat serum and then stained with ARG58016 anti-gamma Catenin antibody at 1 µg/ml dilution, overnight at 4°C.



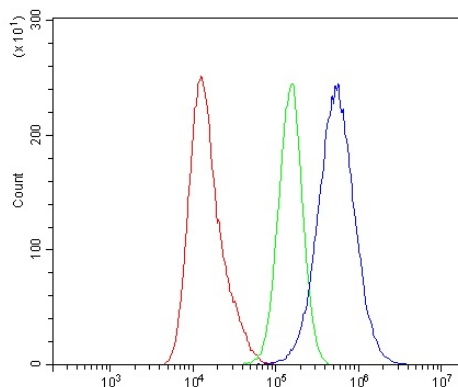
ARG58016 anti-gamma Catenin antibody IHC-P image

Immunohistochemistry: Paraffin-embedded Human intestine cancer tissue stained with ARG58016 anti-gamma Catenin antibody.



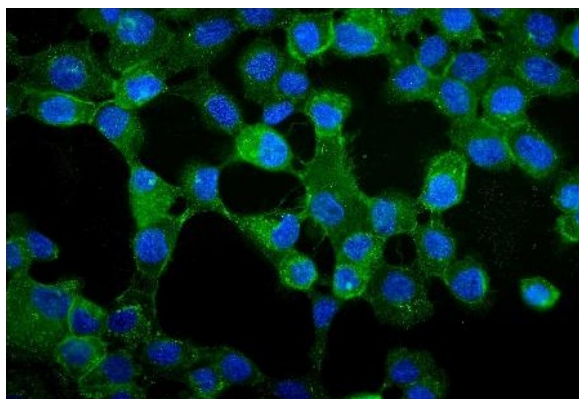
ARG58016 anti-gamma Catenin antibody WB image

Western blot: 1) Rat brain, 2) Rat heart, 3) Rat thymus, 4) Rat RH35, 5) HeLa, 6) COLO320, 7) HepG2, 8) Mouse HepA and 9) MCF-7 stained with ARG58016 anti-gamma Catenin antibody.



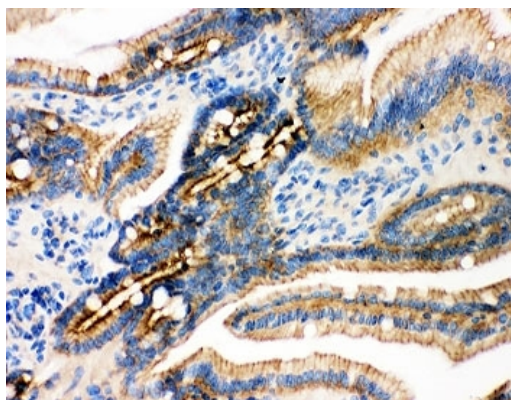
ARG58016 anti-gamma Catenin antibody FACS image

Flow Cytometry: A431 cells were blocked with 10% normal goat serum and then stained with ARG58016 anti-gamma Catenin antibody (blue) at $1 \mu\text{g}/10^6$ cells for 30 min at 20°C , followed by incubation with DyLight[®]488 labelled secondary antibody. Isotype control antibody (green) was rabbit IgG ($1 \mu\text{g}/10^6$ cells) used under the same conditions. Unlabelled sample (red) was also used as a control.



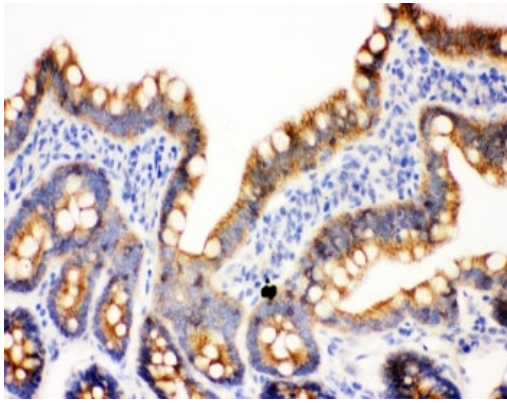
ARG58016 anti-gamma Catenin antibody ICC/IF image

Immunofluorescence: A431 cells were blocked with 10% goat serum and then stained with ARG58016 anti-gamma Catenin antibody (green) at $2 \mu\text{g}/\text{ml}$ dilution, overnight at 4°C . DAPI (blue) for nuclear staining.



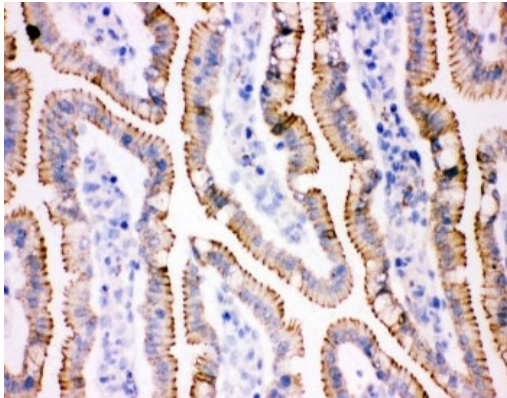
ARG58016 anti-gamma Catenin antibody IHC-P image

Immunohistochemistry: Paraffin-embedded Mouse intestine tissue stained with ARG58016 anti-gamma Catenin antibody.



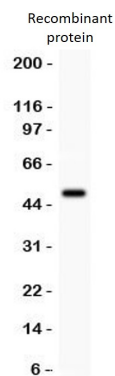
ARG58016 anti-gamma Catenin antibody IHC-P image

Immunohistochemistry: Paraffin-embedded Rat intestine tissue stained with ARG58016 anti-gamma Catenin antibody.



ARG58016 anti-gamma Catenin antibody IHC-Fr image

Immunohistochemistry: Frozen section of Rat intestine tissue stained with ARG58016 anti-gamma Catenin antibody.



ARG58016 anti-gamma Catenin antibody WB image

Western blot: 0.5 ng of recombinant Human protein stained with ARG58016 anti-gamma Catenin antibody.